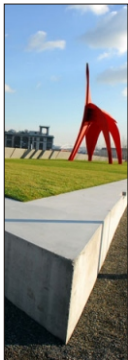


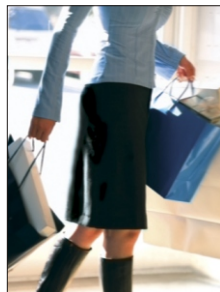
## *Bring a Companion!* *Activities*

Whether you relish urban delights or revel in the great outdoors, the Seattle area has something to offer for everyone. Companion activities are scheduled to allow you to explore a few of the possibilities.

Skagit Valley, an hour north of the hustle and bustle of the city, celebrates the 23<sup>rd</sup> Annual Tulip Festival during the month of April.



Seattle's waterfront is a vibrant scene, featuring the iconic Pike Place Market, among other attractions. Newly opened is the Seattle Art Museum Olympic Sculpture Park.



Discover shopping, dining, and entertainment opportunities available nearby at the Bellevue Collection and the Bellevue Galleria.

## *The Hilton Hotel* Bellevue, Washington



The 2007 meeting will be held at the Hilton Hotel in Bellevue, Washington. This full service hotel is located in the heart of the economic and cultural hub of the Bellevue/Redmond area, and is in convenient proximity to such major businesses as Microsoft, Paccar, and Boeing.

For more information, visit the hotel's website:  
[www.bellevuehilton.com](http://www.bellevuehilton.com)

### *Questions?*

Steve Brown, 2007 Meeting Chair  
[r.steve.brown@pse.com](mailto:r.steve.brown@pse.com)  
Phone: 425-456-2236

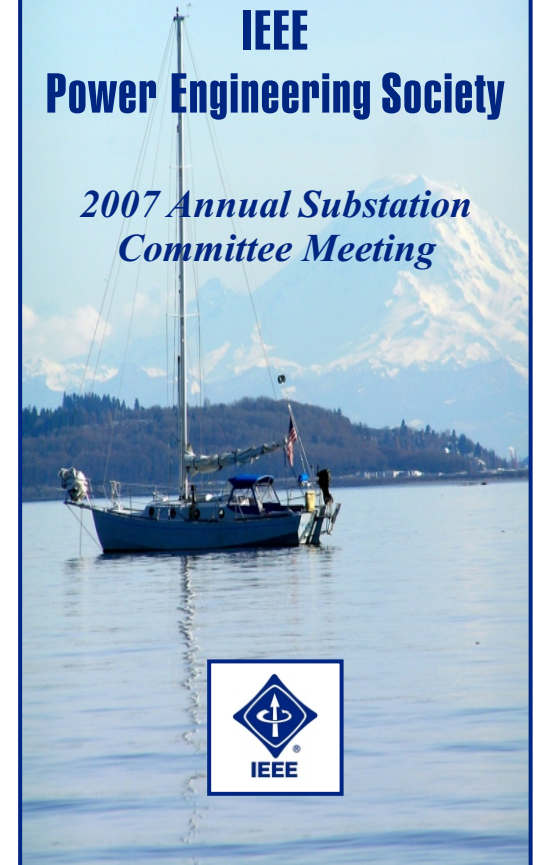
Steve Allen, 2007 Meeting Vice Chair  
[sallen@ieee.org](mailto:sallen@ieee.org)  
Phone: 425-456-2386

Bob Nowell, Substation Committee Chair  
[RSNowell@southernco.com](mailto:RSNowell@southernco.com)  
Phone: 770-550-6882



## **IEEE** **Power Engineering Society**

### *2007 Annual Substation Committee Meeting*



*Bellevue, Washington*  
*April 15-19, 2007*

## *You Are Invited...*

As host utility for this year's meeting, Puget Sound Energy (PSE) welcomes you to attend the 2007 IEEE Power Engineering Society (PES) Annual Substation Committee Meeting in beautiful Bellevue, Washington.



Experienced engineers from across the United States and around the world will be in attendance at this event. These are the engineers who collaborate to develop the power substation design, construction, and maintenance standards for substations. Published by IEEE, these standards are referred and adhered to by industry.

## *Please Join Us*

For more information about meetings, tutorials, tours, and activities as well as registration details:

**Visit the 2007  
Substation Committee Meeting  
Website:  
<http://www.ieee.org/ascm07>**

## Benefits

One of the primary objectives of the Substation Committee is to add to the knowledge base and experience level of engineers working in the power industry. If your business involves work with power substations, there are many benefits to attending the 2007 meeting:

- **Expand your understanding** by participating in one of the many technical tutorials
- **Affect industry standards** by getting involved in a working group
- **See other high-voltage facilities** first-hand by attending a technical tour of a local installation showcasing GIS design
- **Connect with your peers** by networking at the social events
- **Stay informed** on the future direction of the industry
- **Represent the interests of your company** in the development of IEEE standards and guidelines
- **Interface with other professionals** to find new solutions to your company's challenges

## Subcommittees

The PES Substation Committee is comprised of several subcommittees, which create working groups to continually update the IEEE Standards publications. These subcommittees cover specific areas of interest. Following is a partial list of subcommittees:

- Data Acquisition, Processing, and Control Systems
- Transmission and Distribution Substations
- West Coast Interests
- High Voltage Power Electronics
- Gas Insulated Substations

