



Business Continuity at Exelon

Italo De Santis
Corporate Business
Continuity Coordinator
April 24, 2008

Exelon Overview

1

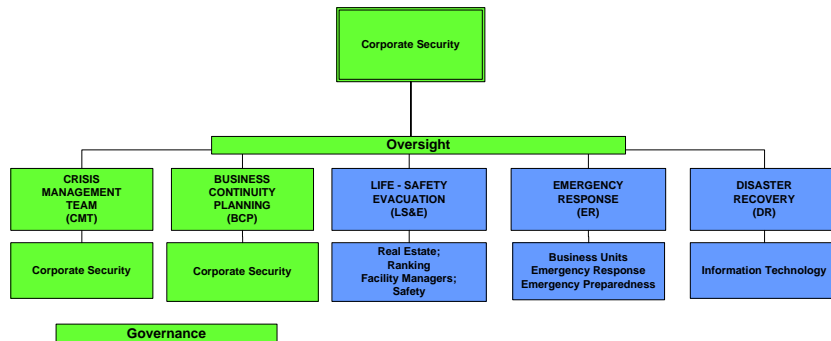


- ✓ Nation's largest electric utility
 - Largest Nuclear fleet in the US
- ✓ 5.8 m Electric customer, 460k Gas customers
- ✓ Serving customers in IL and PA
- ✓ 17,300 employees in IL, PA, TX, MA, OH & DC
- ✓ Corporate Headquarters in Chicago, IL
- ✓ Multiple Business Units
 - Regulated utilities (PECO, COMED), Nuclear Operations, Trading, Generation and Business Services



Crisis Management Structure

2



Exelon®

Business Continuity at Exelon

3

- ✓ 1 Corporate BCP Program Coordinator
 - Report to VP Corporate Security
 - Meetings held monthly with BU Coordinators
 - Updates provided to Operations Council, Risk Committee, Audit Committee, Strategy & Policy Committee and BOD
- ✓ 7 BCP VPs
 - Representing each Business Unit
- ✓ 7 Business Unit Coordinators
 - Representing each Business Unit
 - Meetings held frequently with BCP Planners
- ✓ Several Hundred(400+) Functional Planners
 - Representing functions within each BU

Exelon®

Business Continuity at Exelon

4

✓ BCP Post 9/11

- BCP plans for “worst case scenario”
 - Building and everything inside is not available
- Plans were tailored for ‘classic’ disaster scenarios:
 - Man made disasters (e.g. fire, bomb, etc)
 - Acts of nature (e.g. floods, hurricanes, etc)
 - Loss of infrastructure (e.g. systems, power, etc)



Business Continuity at Exelon

5

✓ Use dedicated BCP software

- Living Disaster Recovery Planning System (LDRPS) v9.1
- BIA Professional v4.1
- Notifind

✓ 270 BCP Plans

- By Location / Function

✓ 350 Building Addendums

- Employees, Call trees & alternate locations

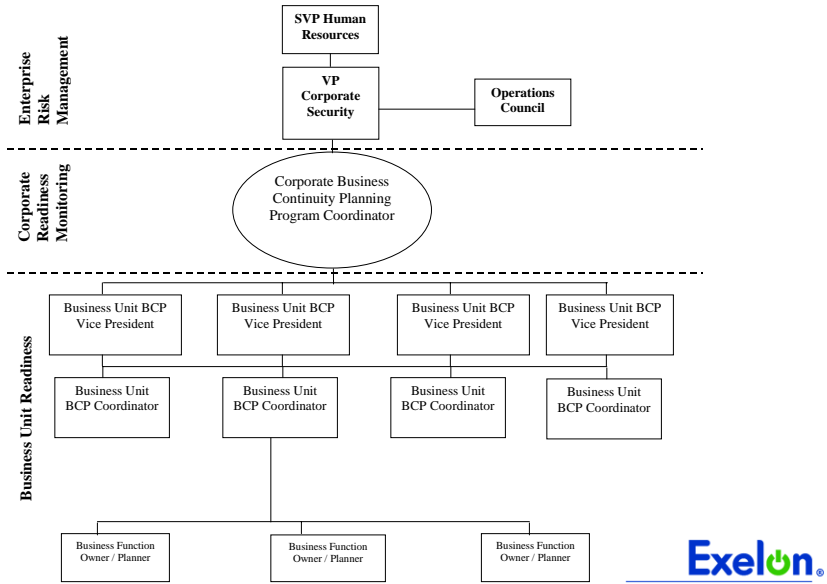
✓ 400+ employees involved in the program

- 1 full time
- 7 20-50%
- 410 <10%



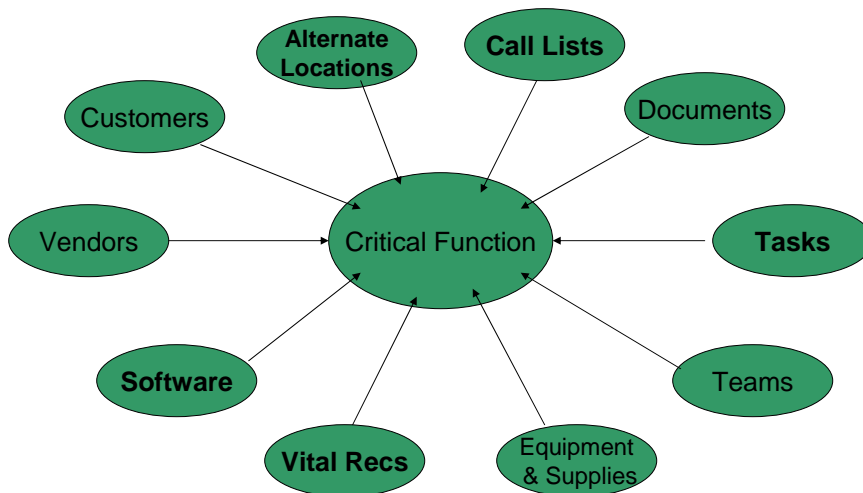
Business Continuity at Exelon

6



What's in BCP plan?

7



BCP - What every employee should know

8

- ✓ Know your location's gathering/rally point.
- ✓ Keep your personal information current with HR
- ✓ Keep your Exelon Emergency Preparedness System (EEPS) wallet cards handy
- ✓ BCP Basics:
 - RTO
 - Call Lists
 - Alternate location
 - Key tasks and responsibilities in the plan
- ✓ Policies
 - News Media Policy in BC plan
 - Disaster Spending guide



Business Continuity at Exelon - History

9

- ✓ Crisis Management organization developed after September 11th
 - Company-wide BC plans created
- ✓ Company-wide BC plan updates held
 - All plans are updated three times per year
- ✓ BC plan testing
 - Tested annually (relocation, Tabletop or Walkthroughs)
- ✓ Call list tests
 - Drilled annually (Implementing a notification system)
- ✓ Alternate locations reviewed
 - Reviewed three times per year per Real Estate and Facilities
- ✓ Communication campaign
 - Annually, during National Preparedness Month (September)
- ✓ Company-wide BIA conducted in 2005
 - Next BIA to be conducted 4Q 2008



✓ Implementing an automated notification system (EEPS):

- Based on Notifind:
- Employee Accountability
 - EEPS is one of the methods used for employee accountability, Rally points and Call trees are also used
- Call list activation
- Pandemic



EEPS Card

SIDE 1

EXELON EMERGENCY PREPAREDNESS SYSTEM (EEPS)
 If I evacuate a building due to a life-threatening event (e.g. fire, explosion, etc.) I should contact EEPS as soon as it is safe to do so in order to be accounted for and receive information about the status of my business unit.

Option 1:
 1. Dial (888) 806-3666
 2. Enter your Exelon Employee ID and #, then follow the prompts.

Option 2:
 1. Log into www.notifind.net/Exelon
 2. Enter your Employee ID and password, then follow directions.

SIDE 2

IMPORTANT EMERGENCY INFORMATION

Evacuation rally point _____

Alternate work location _____

Emergency contact name/number _____

Allergies/Medical conditions/Blood type _____

Corporate Security Hotline: 1800-550-6154



- ✓ During 2009 Exelon will move to the creation of “Business Resumption Plans”
 - Refocus of BCP plans to include “Human factor”.
 - Move away from silos in planning
 - All Hazards plan with all core components
 - Specific “disaster” annexes
 - BCP
 - Pandemic
 - Strike Contingency
 - Any others..