

2009-  
2010

# Eta Kappa Nu Gamma Chapter

2009-2010 Annual Chapter Report



at  
THE OHIO STATE UNIVERSITY



## Table of Contents

Introduction .....	3
Chapter Information .....	3
2009 – 2010 Officers .....	3
Chapter Statistics .....	4
Chapter Size and Initiation Rate .....	4
IRS Reporting.....	5
Activities.....	6
Eta Kappa Nu Tutor Room .....	6
Fred H. Pumphrey/Eta Kappa Nu Distinguished Teaching Award .....	8
Weekly Study Sessions.....	8
Faculty – Student Quarterly Donut Socials .....	8
Company Information Sessions .....	9
Society of Women Engineers Career Fair .....	9
Eta Kappa Nu National Conference – Dearborn, MI .....	9
Member Socials.....	10
Elections.....	12

## Introduction

The following is a report of the activities and statistics of the Gamma chapter of Eta Kappa Nu at The Ohio State University for the 2009 – 2010 school year. Please note, Ohio State is still on a quarter system, so some terms may not be familiar. The following shows the breakdown of the quarters in terms that will be referred to from this point forward:

Autumn Quarter – Mid September to mid December

Winter Quarter – January to mid March

Spring Quarter – Late March to mid June

\*each quarter is 10 weeks in length

## Chapter Information

The Gamma chapter is located at The Ohio State University.

205 Drees Labs  
2015 Neil Avenue  
Columbus, OH 43210

This report is being submitted by the corresponding secretary Greg Gerber.

## 2009 – 2010 Officers

The officers for the 2009-2010 year, which held office from Autumn 2009 through Spring 2010 are the following:

President:	Heath McAfee
Vice President:	Jeremy Vila
Treasurer:	Nicholas Host
Recording Secretary:	Irfaan Dar
Corresponding Secretary:	Sam Cooler
HKN Web Correspondent:	Shawn Hall
Faculty Advisor:	Professor Robert Garbacz

In addition to the required headquarter officer positions, the Gamma chapter had officers in the following positions:

Historian:	Jason Syu
Social Chair:	Travis Case
Engineering Council Reps:	John Saige Bryan Skursha Andrew Davis
Marketing Consultant:	Dan Twaddell
ECE Alumni Society Rep:	Tejas Kataria
Faculty Treasurer:	Professor Ronald Reano

Refer to Figure 1 for a photo of the 2009-2010 officers.

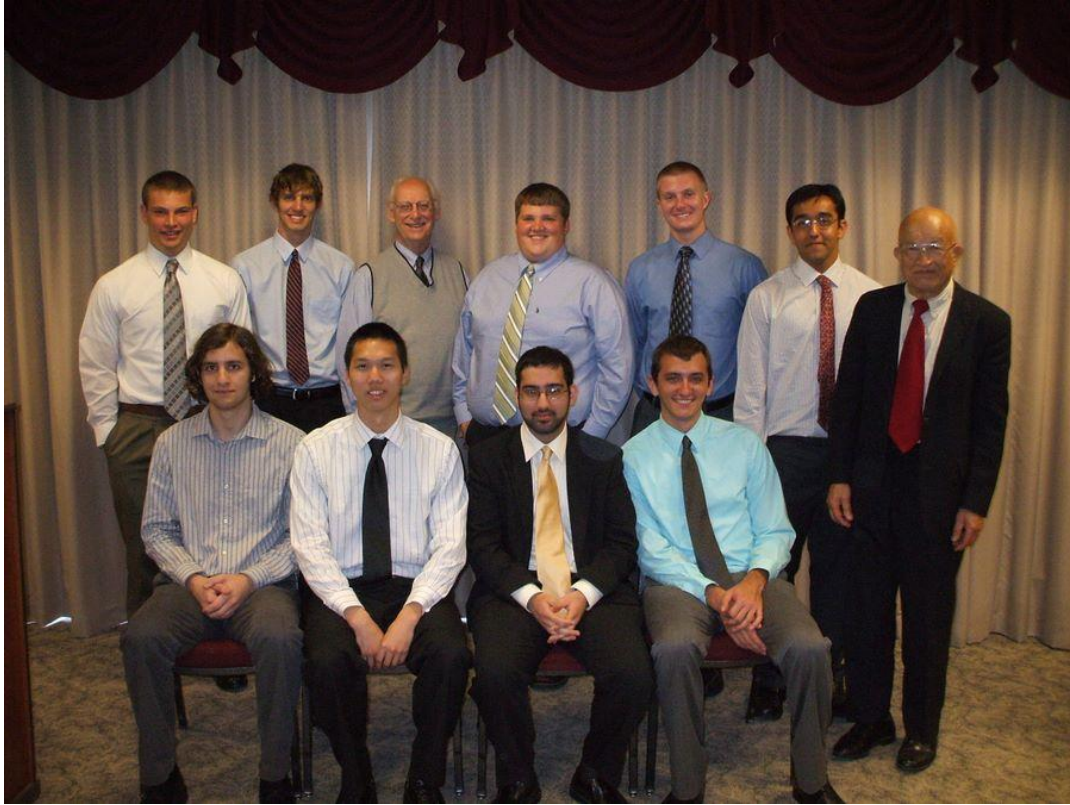


Figure 1: 2009-2010 Gamma Chapter Officers – Back Row (L to R): Nick Host, Travis Case, Prof. Garbacz, Heath McAfee, Bryan Skursha, Tejas Kataria, Prof. Hemami. Front Row (L to R): Sam Cooler, Jason Syu, Irfaan Dar, Jeremy Vila.  
Not Pictured: Shawn Hall, John Saige, Andrew Davis, Dan Twaddell, Prof. Reano.

## Chapter Statistics

### Chapter Size and Initiation Rate

In the fall of 2009, the Gamma Chapter consisted of 30 members that were still pursuing an electrical or computer engineering degree at Ohio State. The chapter inducts members in Winter and Spring quarters. In winter 2010, 50 invitations were sent out to qualifying junior and senior students. No invitations were sent to graduate students. Of the 50 invitations, 19 were initiated in March 2010. No faculty or graduate students were initiated. Prior to the spring quarter, the chapter size was 49 students. 40 invitations were sent out in the spring 2010 to qualifying undergraduate students. Of the 40 invitations, 9 new members were initiated in June 2010. No faculty or graduate students were initiated. Refer below to the Winter and Spring induction class photos.



Figure 2: Winter 2010 Induction Class



Figure 3: Spring 2010 Induction Class

## IRS Reporting

The chapter filed the IRS e-Postcard, 990N form, on October 11, 2010.

## Activities

The Gamma chapter is involved in many activities, however the main activity and service is that provided by the HKN tutor room. The chapter also hosts various awards and encourages faculty student relationships. Below is a more in-depth look at each activity.

### Eta Kappa Nu Tutor Room

The Gamma chapter feels very strongly about helping the students of the Electrical and Computer Engineering Department at Ohio State. For this reason, the chapter staffs a free tutor room for all introductory ECE classes, open to all students. In addition to providing a service to the ECE department, the tutor room is often occupied with students from other engineering disciplines that are required to take a few introductory electrical engineering classes. This gives Eta Kappa Nu an opportunity to provide a service to the entire engineering school. The tutor room has become a passion of the Gamma chapter and its officers. It is staffed daily. The tutors are all HKN members and officers, and are volunteering their time for the benefit of others. In addition to helping the development of younger ECE students, tutoring allows for members to hone their skills and truly understand concepts. It is often said that you really understand something when you can explain it to someone else.

The tutor room is managed by the vice-president. It is his/her responsibility to secure HKN members as tutors and to keep a schedule posted so that students know when to find a tutor. It is also their responsibility to track the tutors and report the results of each quarterly session to the rest of the officers. In Autumn 2009, the tutor room was staffed for 134.5 person-hours, and tutored 361 students. In Winter 2010, the tutor room was staffed for 144 person-hours, and tutored 269 students. In Spring 2010, the tutor room was staffed for 129 person-hours and tutored 266 students. For the year, the tutor room was staffed for a total of 407.5 person-hours and tutored 896 students.

The tutor room is a very fun and rewarding experience. Below are some photos of students in the tutor room.



Figure 4: ECE Students Getting Help from the Tutor

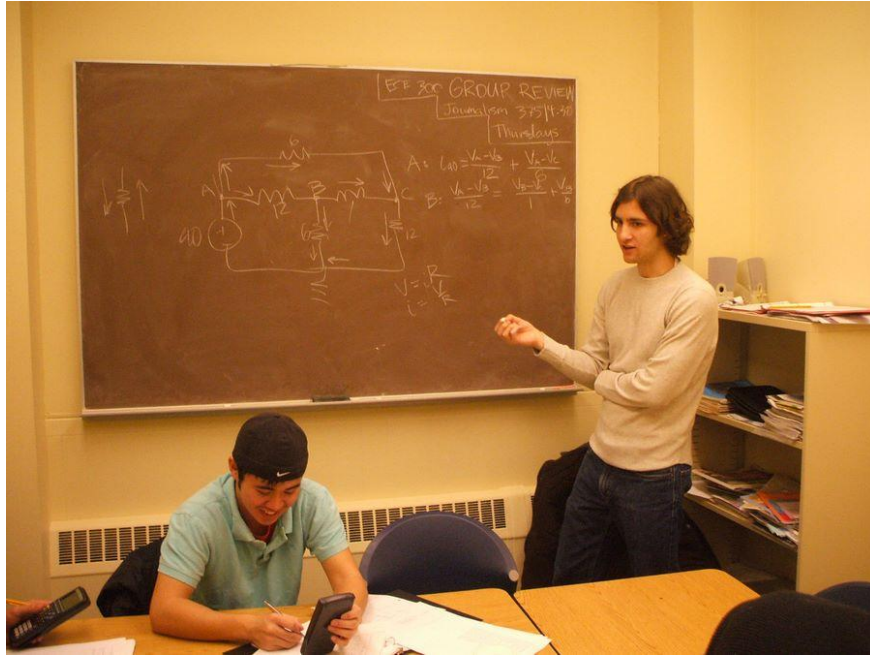


Figure 5: HKN Member Sam Cooler Explaining Node Analysis



Figure 6: Students Leaving the Tutor Room

## Fred H. Pumphrey/Eta Kappa Nu Distinguished Teaching Award

Each spring, the Gamma chapter presents a faculty member with the Fred H. Pumphrey/Eta Kappa Nu Distinguished Teaching Award. Students of the ECE department each vote for their favorite ECE professor at a ballot station that is setup by HKN. At the end of the voting week, the ballots are counted and the winner is chosen. A cash award, from an endowment set up by Mr. Fred H. Pumphrey, along with a plaque is presented to the chosen faculty member at the final HKN social.

The duties of manning the voting booth are taking on by the members and new initiates of HKN. It is a initiate requirement to volunteer on hour of their time to man the booth. The booth is manned for 3 days for 8 hours each, by two people, for a total of 48 person-hours.

The award recipient for 2009-2010 was Professor Bradley Clymer.

## Weekly Study Sessions

In addition to operating the tutor room on a daily basis, this past year, the Gamma chapter decided to offer a weekly study session that was focused on the main circuits class in the major. This decision was due to an overwhelming number of students that needed help with this class, and it was easier to meet with everyone at once. The sessions took place during Autumn and Winter quarters and were staffed by three students for a 1 hour period. For both quarters, this was a dedication of 60 person-hours.

## Faculty – Student Quarterly Donut Socials

One of the main goals of the Gamma chapter is to encourage more student-faculty relationships. In order to meet this goal, it was decided to hold quarterly donut/coffee socials. The socials are held once a quarter in the ECE faculty lounge. HKN provides donuts, coffee, and juices free to all ECE students, faculty, and staff. The socials allow for the faculty and students to converse in a relaxed environment, and have shown to be a lot of fun. The main beneficiary of the socials is everyone. Students get a chance to talk with professors outside of the classroom and in most cases find out what really makes them tick. The socials also seem to put everyone in a good mood; it is therefore most often planned following the week of midterms. Below are some photos for past donut socials.

The event is manned by two people for three hours. It occurs 3 times a year for a total of 18 person-hours.







### Company Information Sessions

HKN also hosts company information sessions. This past year, the Gamma chapter hosted an information session for M.C. Dean, an electrical contractor out of Washington, D.C. The information session took place Autumn quarter and was prior to the fall career fair. It allowed all students to come and find out more about the company. HKN's responsibilities were mostly organizing and booking a room, as well as posting flyers and sending out invitations to the event. It required 5 person-hours of time.

### Society of Women Engineers Career Fair

The Gamma chapter also volunteered 10 person-hours to the SWE career fair. Volunteers tended to company representatives needs and provided refreshments.

### Eta Kappa Nu National Conference - Dearborn, MI

This past year, the chapter sent four members to the National Conference in Dearborn, MI. The members raved about the experience and brought back many good ideas for the chapter. The main beneficiaries of this activity were the chapter. It allowed us to develop new ideas about outreach and fundraising, as well as fun activities for the chapter. It also gave us a chance to interact with students from other universities and build relationships and networks. Given the time commitment, this involved 40 person-hours at the conference. Below are photos from the trip.



Figure 7: Members Travis Case and Irfaan Dar at the 2009 National Conference



Figure 8: Member Jason Syu at the National Conference

## Member Socials

Finally, in order to reward members for their dedication to the tutor room and to the above mentioned activities, the chapter holds two socials a quarter, where members and faculty get together and relax over a some chicken wings or pizza and have a good time. Socials are attended by 30+ members, faculty, and occasionally alumni. The quarterly socials are a great chance to talk with faculty outside of class and

get and understanding for their interests and hobbies. It also allows for networking and developing relationships for the basis of recommendation letters and future graduate school plans. Most of all is a fun, relaxing time, and is meant to reward members for all their hard work with the tutor room. The member socials are not a service activity but involve 30+ members for 2-3 hours per event, for a total of 360 person-hours per year. Below are some photos from this past year's social events.



Figure 9: Student-Faculty Interaction



Figure 10: Member Social at Buffalo Wings and Rings

## Elections

At the last social in June 2010, the following new officers were elected for the 2010-2011 year:

Co-Presidents:	Shawn Hall Irfaan Dar
Vice-President	Taylor Williams
Treasurer:	Laura Tufts
Corresponding Secretary:	Greg Gerber
Recording Secretary:	Jason Syu
HKN Web Correspondent:	Phil Rhinehart
Engineering Council Reps:	Jessica Burk Robert Zupke
ECE Alumni Society Rep:	Tommy Summers
Historian:	Jennifer Smith
Social Chair:	Travis Case
Marketing Consultant:	Alex Lybarger
Faculty Advisor:	Professor Hooshang Hemami
Faculty Treasurer:	Professor Ronald Reano