



New Interconnect Solutions Seminar - 2015

Glenair

An Interconnect Industry Leader Since 1956

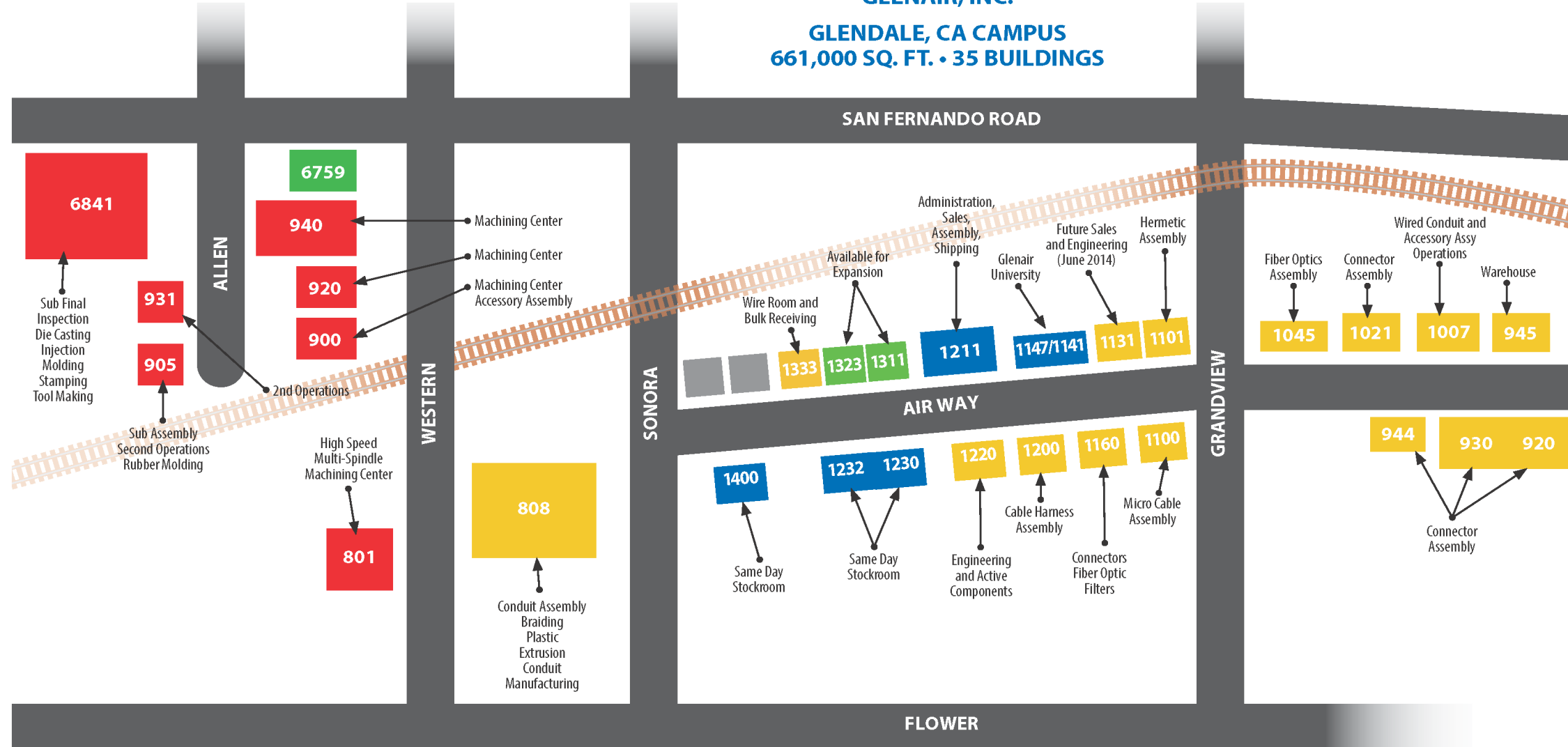
- Original Glendale CA factory on Air Way
- Additional Italy and UK factories
- Complete vertical integration
- Mil-Aero interconnect industry's largest engineering and technical support team



Glenair Southern California Facilities



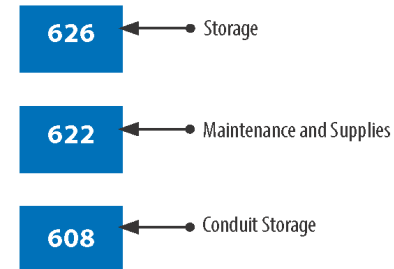
GLENAIR, INC.
GLENDALE, CA CAMPUS
661,000 SQ. FT. • 35 BUILDINGS



TOTAL SOUTHERN CALIFORNIA FACILITIES:
869,100 SQ. FT. • 36 BUILDINGS

- MACHINING CENTERS
- ASSEMBLY BUILDINGS
- ADMIN, INSPECTION, ETC.
- AVAILABLE FOR EXPANSION

February 26, 2014



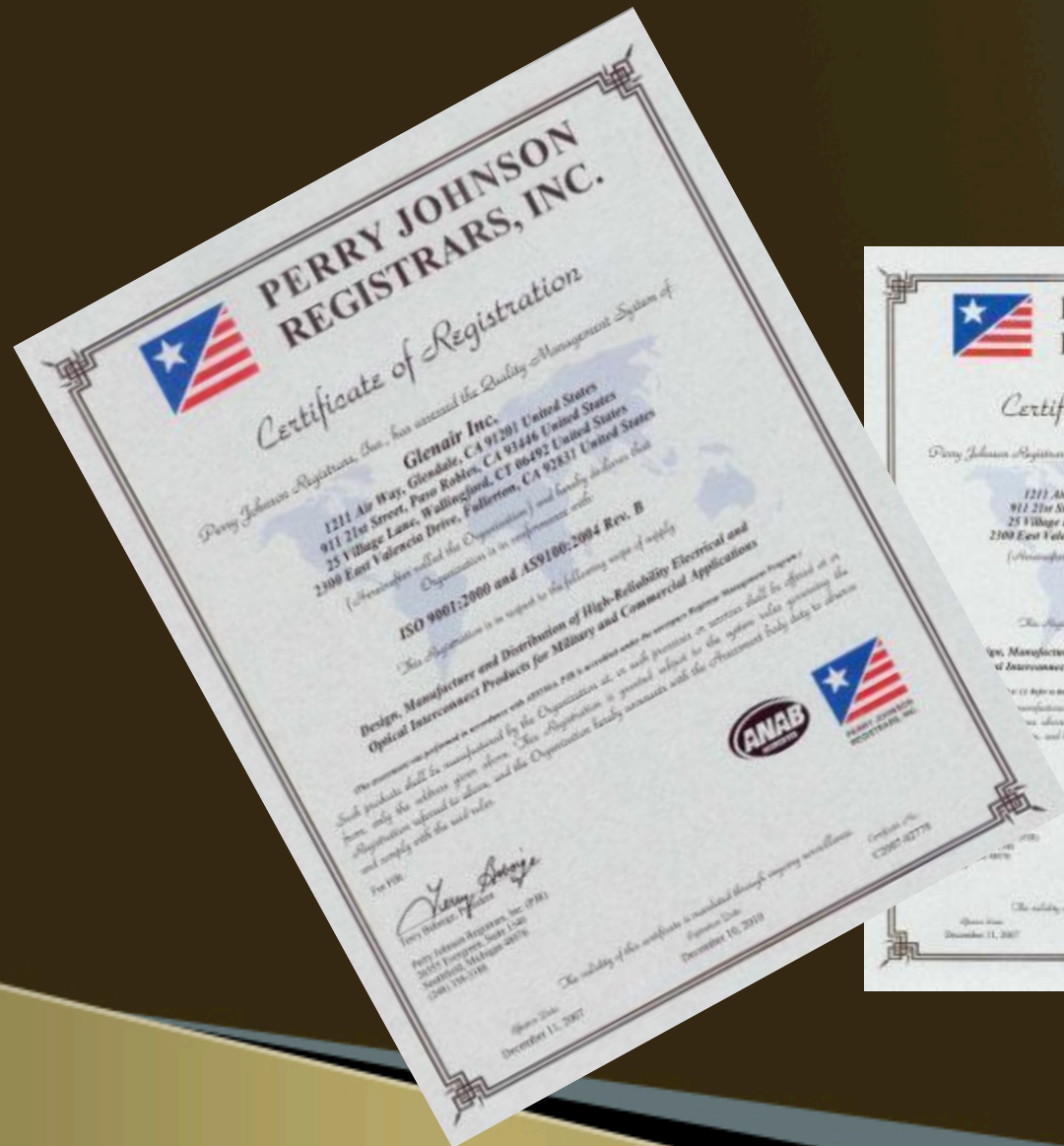
ANAHEIM, CA
(207,000 Sq. Ft.)

Engineering and Machining Center and Connector Assembly



Quality Management System

AS9100 SAE and ISO 9001 Certified



- QMS audits
- Plus customer audits
 - Boeing
 - Airbus
 - Raytheon
 - Northrop Grumman
 - Others



Glenair is THE High-Reliability, High-Quality Standard

- Depth of qualifications and approvals from over 50 years in the business
- Deep fluency in materials selection, machining, plating, assembly, test and certification
- Proven interconnect solutions that solve major performance problems
- “On the print” of hundreds of bench-mark programs

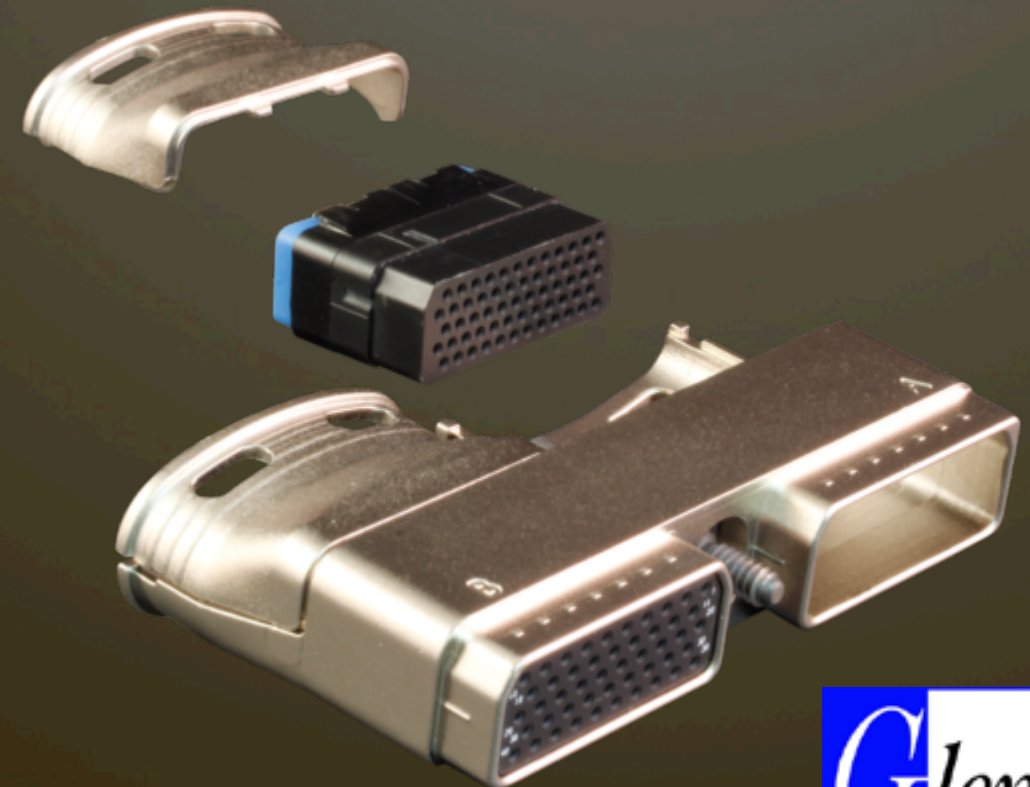


Series 20 Super-Twin™ Rack-and-Panel

Lightweight composite modular connector

- Rack-and-panel interconnect used in avionics bay applications
- Faster termination and assembly of large pin-count rectangular connectors
- Replaces heavier and larger form-factor legacy connectors

SuperTwin™

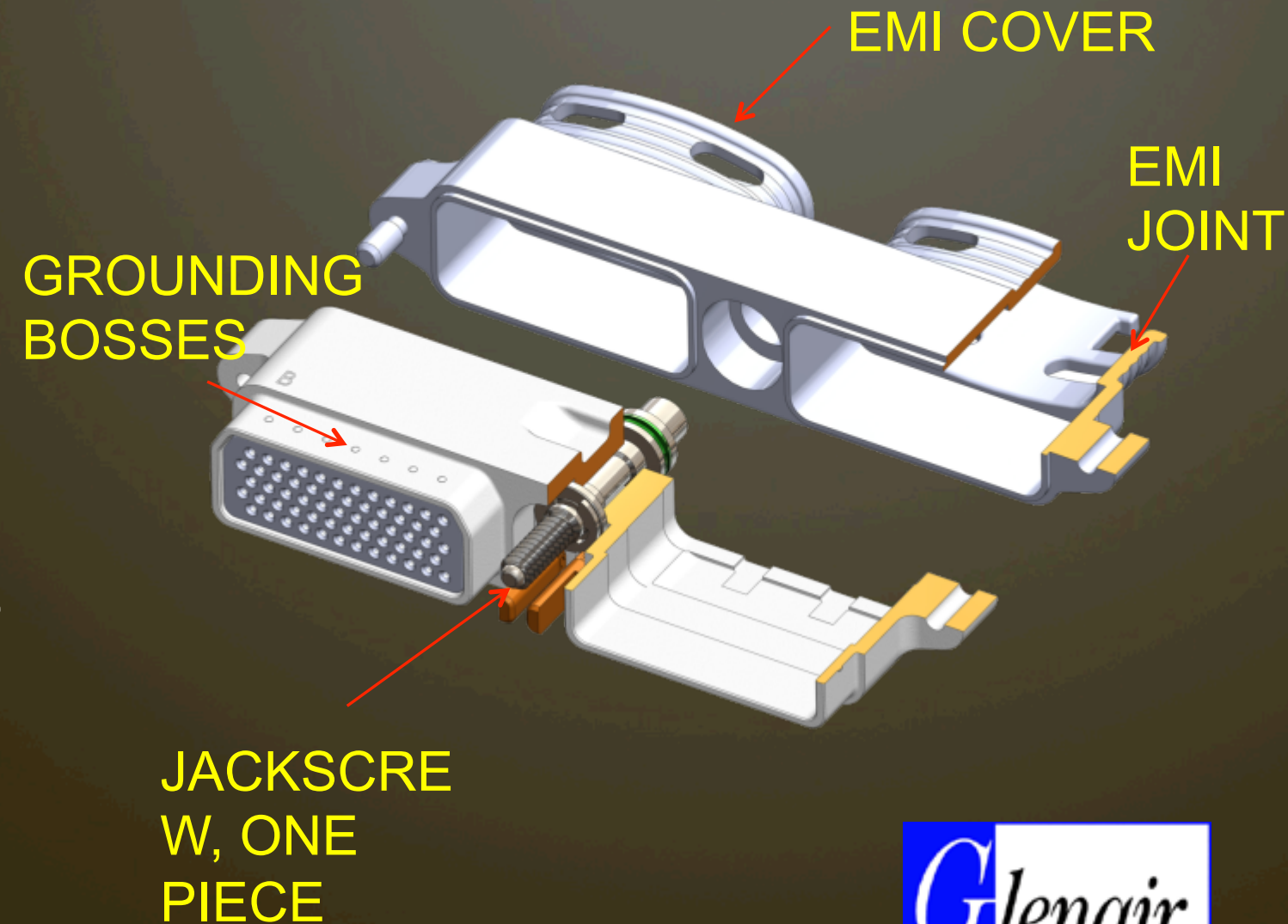


Glennair®

Lightweight Series 20 Super-Twin™

Technical Overview

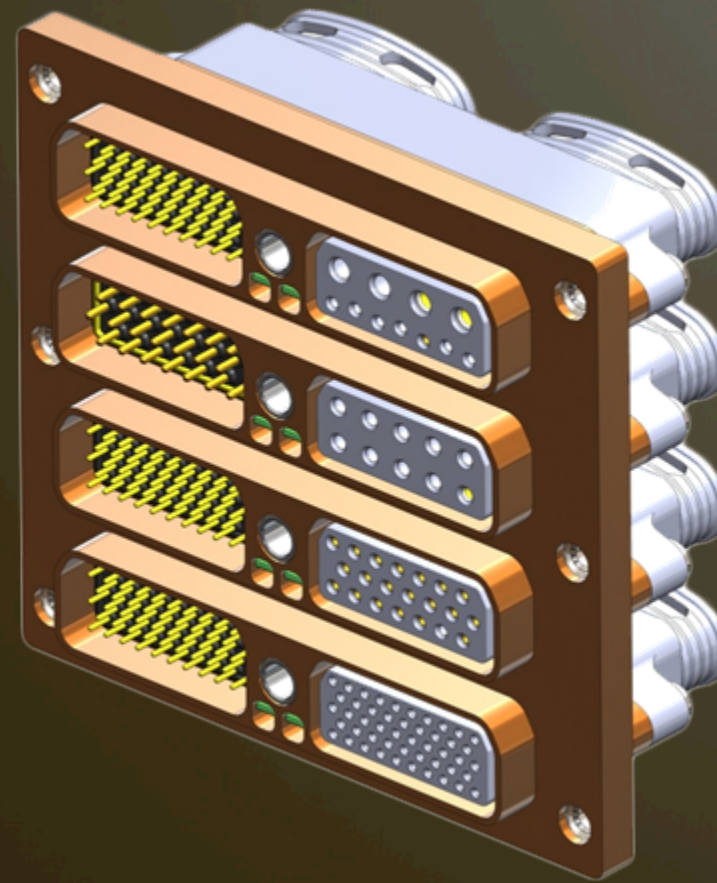
- Composite or aluminum shell
- Series 200: modular inserts, composite shell, integral strain relief/backshell
- Series 201: separate backshell, crimp or PC tail, typically composite shells. Mates with Sr. 200
- Modular inserts support a wide variety of short, Series II type contacts from #23 to #8
- Polarization – both shell and inserts
- Center jackscrew – self-locking hardware



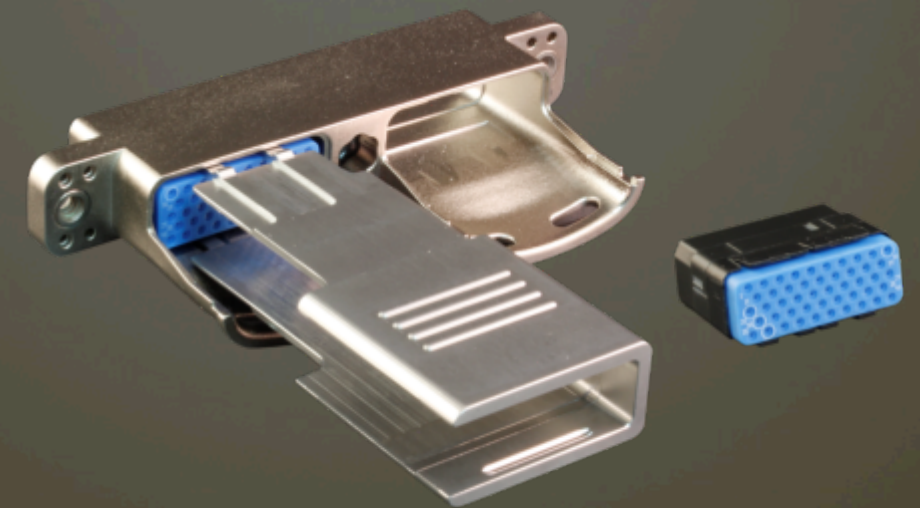
Lightweight Series 20 Super-Twin™

Product Advantages

- Flexible harness design
- Fast assembly and repair
- Hybrid contact layouts
- Environmental seals
- Keyed and keystone inserts
- Industry-standard material



INTEGRAL RECEPTACLE
PANELS



EASY INSERTION AND
REMOVAL

Lightweight Series 20 Super-Twin™

Weight Savings

Series 20 Weight Estimate							
Part Number	Description	grams	Qty	Mated pair	Qty/ plane	Weight/ plane (g)	
201-xxxP2-XMD	Plug Shell	13	1	13	117	1521	
	Backshell, Split	15.8	1	16	117	1849	
201-xxxR2-XMD	Receptacle shell	17	1	17	117	1989	
	Backshell, Split	15.8	1	16	117	1849	
200-005P2-60A	Pin Insert	5.2	2	10	215	1118	
200-006S2-60A	Socket Insert	6.8	2	14	215	1462	
				86 g		9787 g	21.6 lbs

Glenair Shield Termination System

Reduced labor / lighter material shield termination solutions



1. Slim Standard and Nano Band-Master ATS bands



2. Do-Drop-In Swing-Arm backshells and clamps



3. Tubular ArmorLite and AmberStrand braided sleeving and shield sock assemblies

Glenair Shield Termination System

Technical Overview

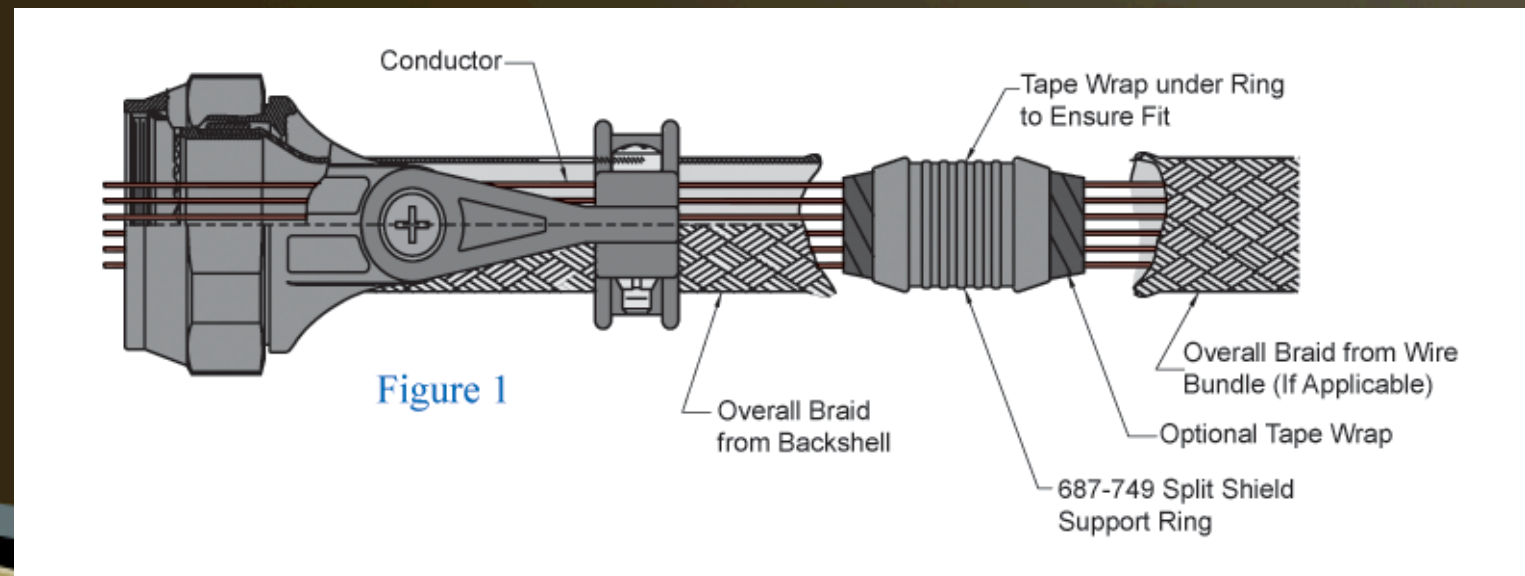
- System features high-performance band technology, shield sock backshells, and Swing-Arm technology
- Fast, reliable and qualified EMI/RFI shield termination
- Microfilament braid, composite hardware, and reduced form-factor bands save significant weight



Glenair Shield Termination System

Product Advantages

- All materials designed for optimal weight reduction
- Banding is faster and more reliable than all other methods
- Microfilament composite and stainless steel braid delivers exceptional EMC performance compared to tin copper
- Repairable, re-enterable solutions

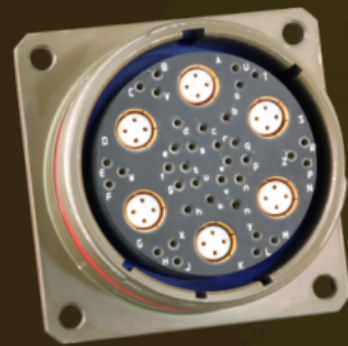


SuperNine™

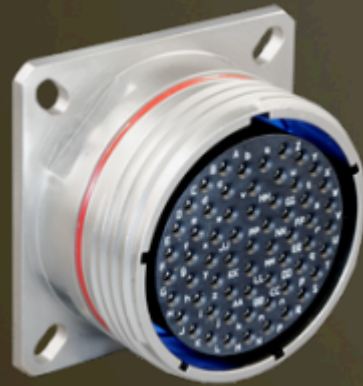
The “Better Than QPL” D38999 Series from Glenair



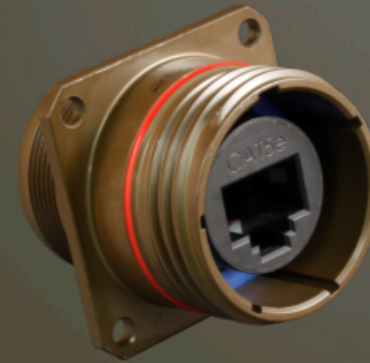
1500 Mating Cycle
Environmental



High-Speed
Environmental



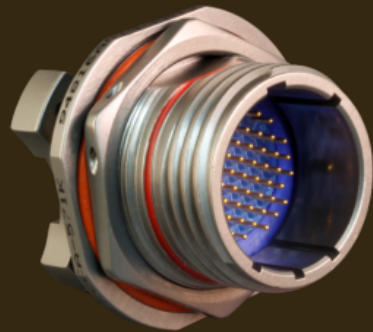
High-Pressure Pin and
Socket Hermetic



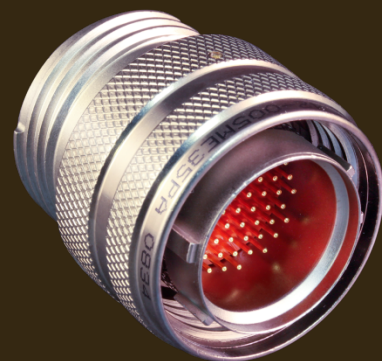
Ruggedized
RJ45 and USB



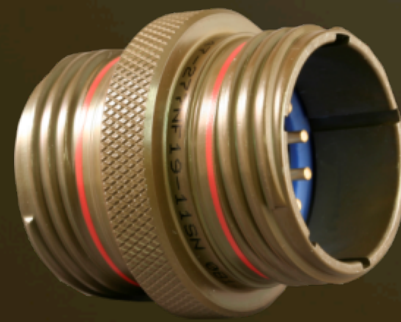
Tight Tolerance Fiber
Optic



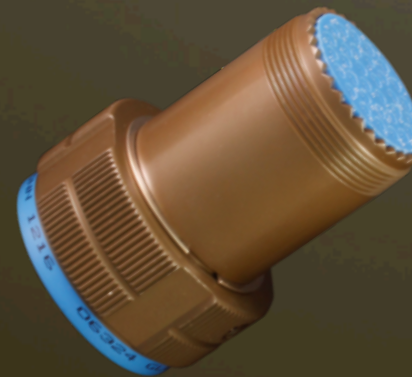
Special PCB
Series



Connector Saver
Go-Betweens



Hermetic and
Environmental Feed-Thrus

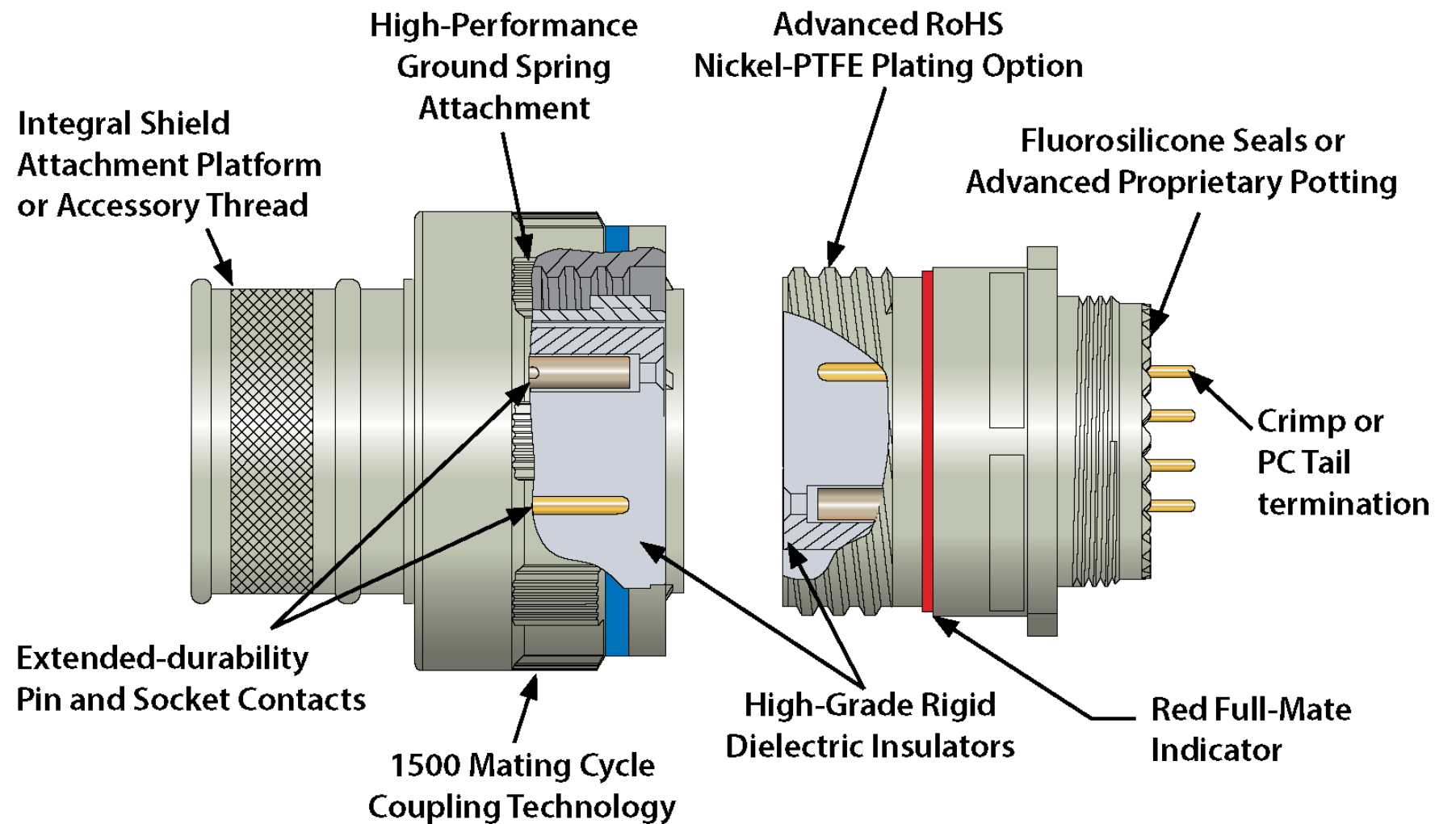


EMI/RFI Filters and TVS
Diode EMP Connectors





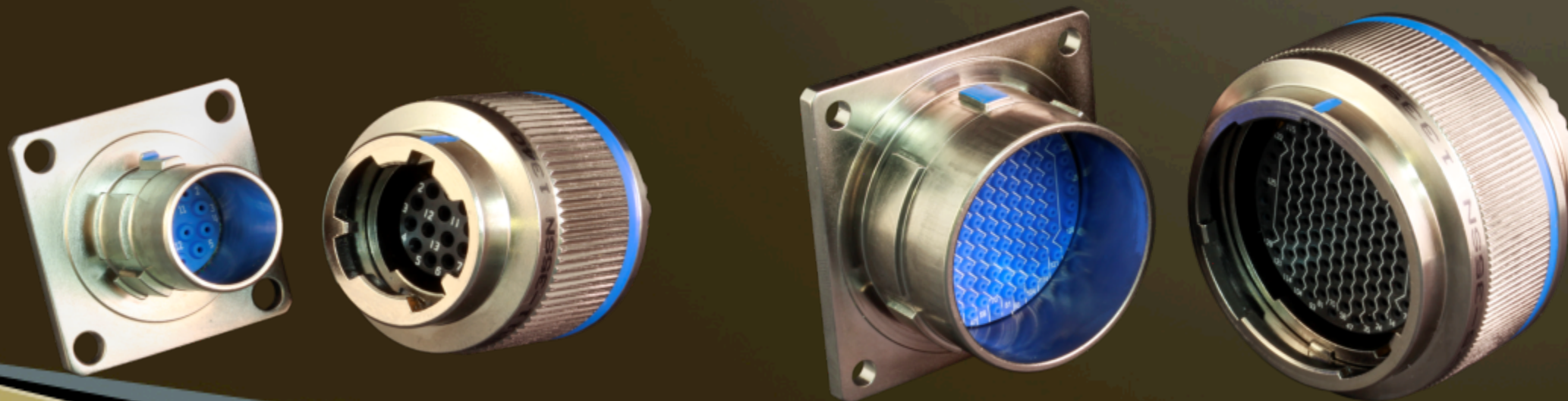
D38999 Environmental 233-205 & 6



MIL-DTL-38999 Series IV

High-Performance Commercial and QPL Versions

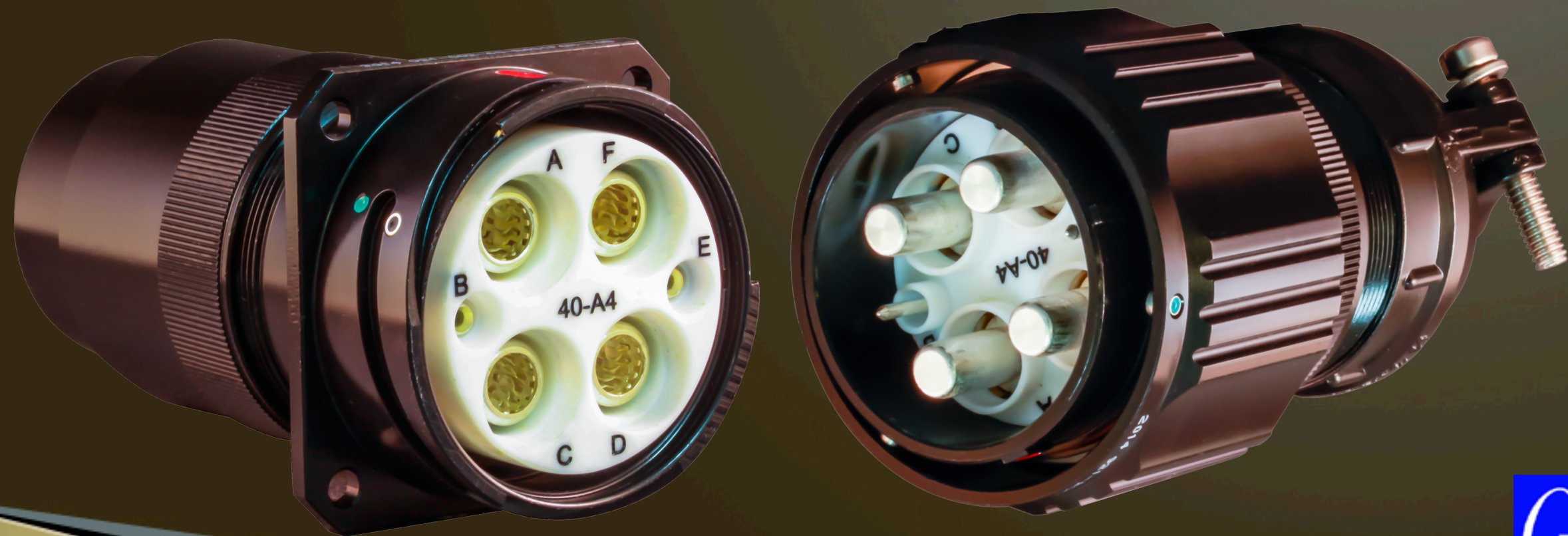
- Commercial version ready for May 2014 launch
- QPL qualification process underway with target date Q1 2015 completion



Super ITS

Advanced Performance 5015

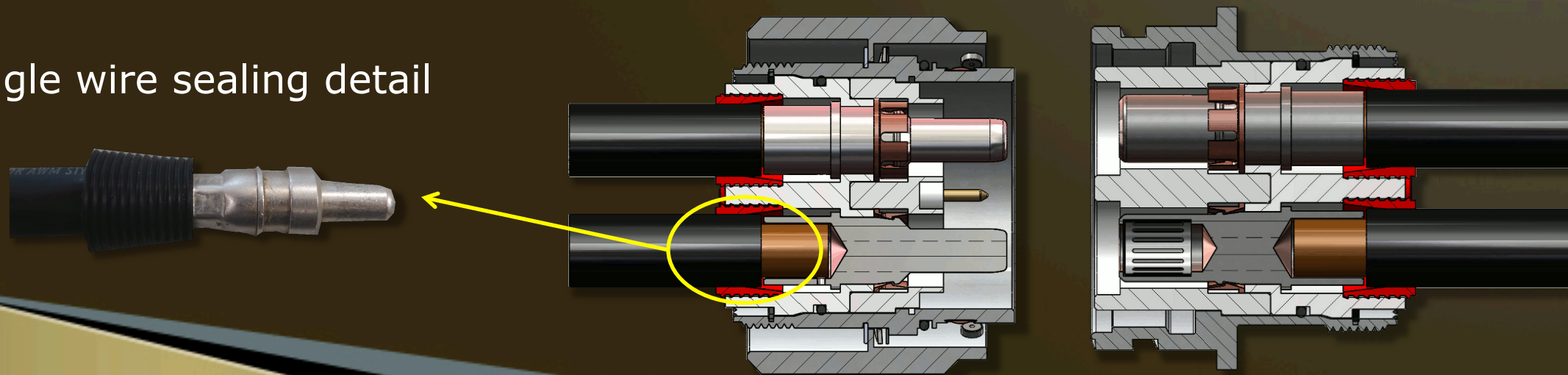
Reverse Bayonet



Super ITS (Series 921)

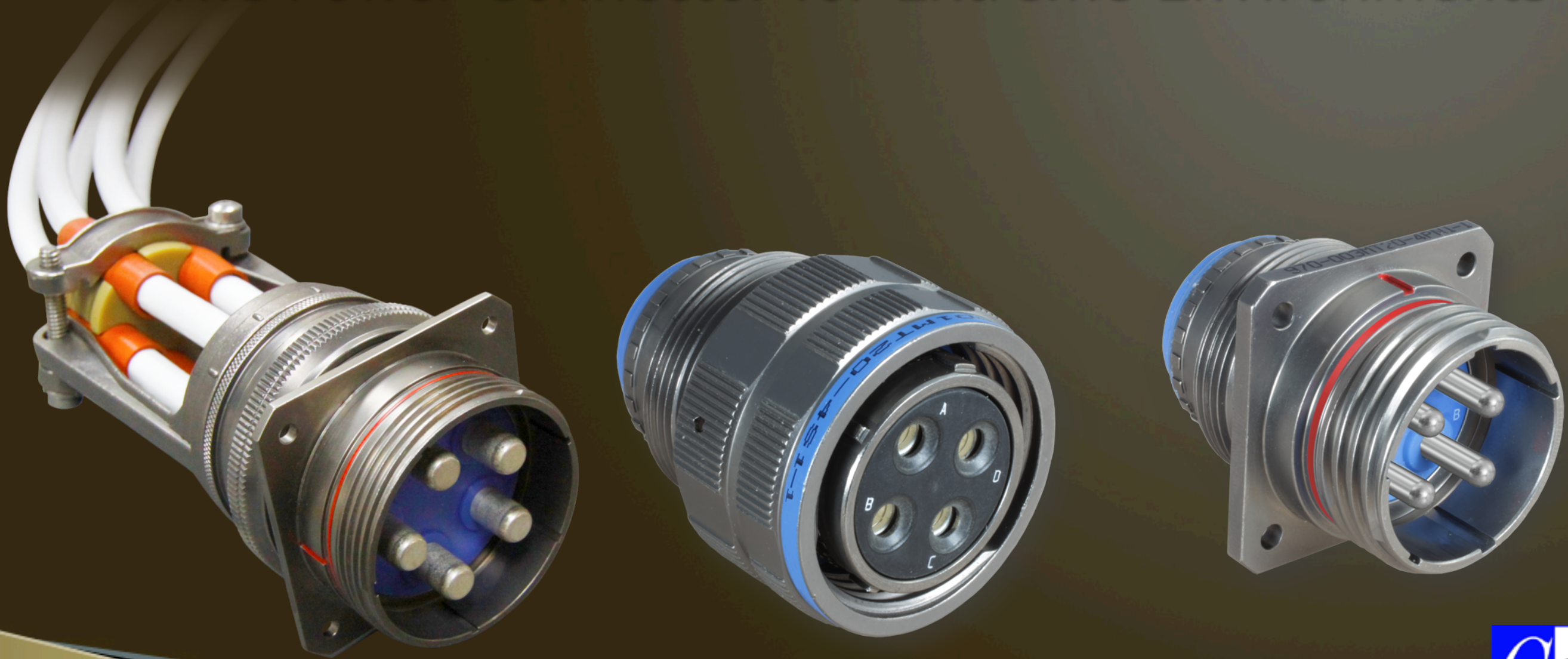
- Power Contacts: Low Insertion Force, High Ampacity, Front Release
- Rigid Insulator with Internal Retention Clip
- Aluminum, Stainless Steel and Marine Bronze Shells with 3 Polarization Keys
- Plating: Cadmium, Nickel, Zinc-Nickel, Black Hard Anodization, Black Electrodeposited Paint
- Silicon O-Ring and Single Wire Seal

Single wire sealing detail



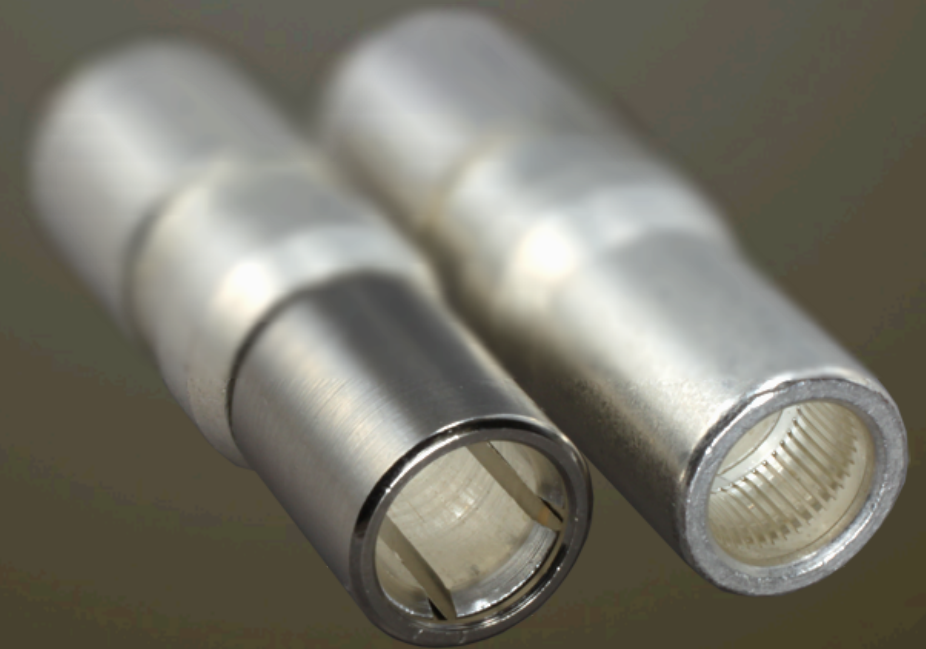
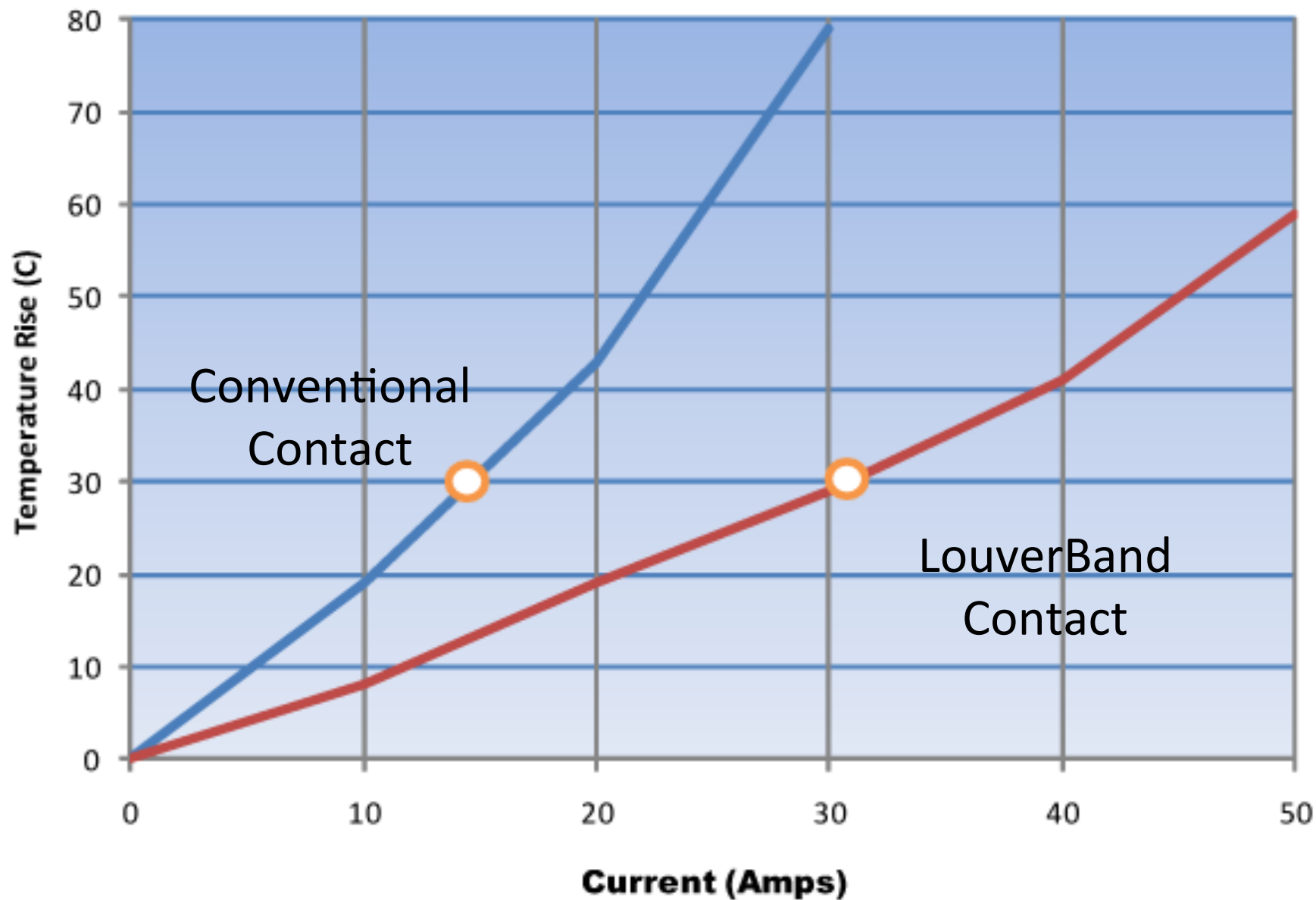
Series 970 PowerTrip™

The Power Connector for Extreme Environments



Series 970 PowerTrip™

LouverBand Socket

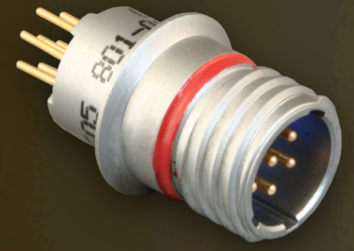


MIGHTY MOUSE

The New Industry Standard for Reduced Size and Weight Applications



Series 800 UN Thread



Series 801 Double-Start



Series 802 AquaMouse



Series 803 Bayonet



Series 804 Quick-disconnect



Series 805 Triple-Start



Hermetic



Filter



Fiber Optic



Feed-Through



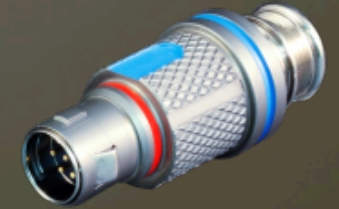
High-Speed



811 High Density

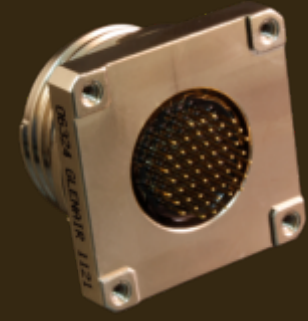


824 Locking Push-Pull



Stinger

Crimp-Removable Stinger HD



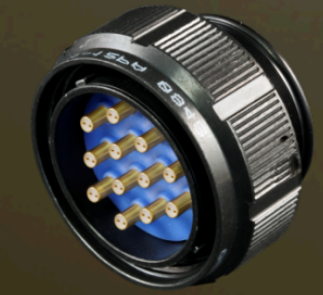
Dual-flange



AlphaLink



Cobra



Ultra-Twinax




Size #8



El Ochito

New Mighty Mouse Cobra



Glenair

MIGHTY MOUSE Cobra

The Ultra-Low Profile EMI/RFI Plug and Backshell Assembly

Innovative shielded low-profile right angle connector plug and backshell assemblies reduce clearance requirements without compromising ruggedness or shielding performance. Available in Series B01 double-start, Series B04 QDC push-pull, and Series B05 triple-start, Cobra assemblies provide optimal low profile cable routing and legendary Mighty Mouse connector performance in a single package. Each Cobra assembly is equipped with a removable rear cover and gasket for easy crimp or solder contact termination of the connector. Both pin and socket versions are available for both crimp and solder terminated versions. Integrated low-profile backshell is equipped with an EMI/RFI shield termination platform and a shrink boot lip. The ultra-lightweight assembly may be locked in eight different angle orientations for additional flexibility in cable routing. Connectors are equipped with polarization keying to prevent mis-mating. Glenair Mighty Mouse Cobra connectors and backshell assemblies mate with available square flange and jam nut receptacles from each respective connector series. Fourteen contact arrangements are available, all with Size #23 contacts from shell size 5 to shell size 21 with 3-130 contacts respectively. Connector shells are aluminum alloy or stainless steel.

- Space-saving design features one-piece machined and brazed connector shell and right angle backshell for minimum height and optimal EMI performance.
- Master key docking enables easy cable entry/exit routing in tight angles.
- Removable rear cover and gasket provides easy access to end of connector for crimp or solder contact termination.

For more information contact Glenair at 818-347-6000 or visit our website at www.glenair.com

MIGHTY MOUSE Cobra TECHNICAL SPECIFICATIONS

How To Order Mighty Mouse Cobra Plug Connector and Backshell Assembly

Sample Part Number: B01-040-020

Connector Series and Mighty Mouse Cobra Part Number	Notes	DNV	B-13	P	A	T
B01-040-020 Double Start with locking plug with outer versions (the ribbon)						
B04-040-020 QDC Push-Pull with locking plug and dislocking mechanism						
B05-040-020 Triple Start with locking plug and dislocking mechanism						

Shell Size - Contact Arrangement: See Table I
 Contact Style: See Table V - A, B01-040 B, B04-040 C, B05-040
 Polarization Key Position: A = Pin, solder; B = Socket, solder; P = Pin, Crimp; S = Socket, crimp
 Cable End Direction: A, B, C, D, E, F. See Table II
 1, 2, 3, 4, 5, 6, 7, 8. See Table IV

Notes

- Use Insulator grommet not supplied.
- Cobra plug connectors mate with respective series receptacles with contact position and opposite contact gender.
- Hand crimp tool: P/N 809-015. Positioner for hand tool: P/N 809-005. Insertion/retention tool P/N 809-008.
- Crimp barrel accommodates 22, 24, 26 and 28 gauge wire.
- All Cobra plugs equipped with Size #23 contacts.

Specifications

- Current Rating: #23 5 Amps
- Test Voltage (DWV): #23-300 VDC Sea Level
- Insulation Resistance: 5000 megohms minimum Series B01, B04
- Wetting Cycles Series B01 and B04: 2000
- Operating Temperature: -55° C. to +125° C. 1000HR
- Shaking Temperature: -55° C. to +125° C. 1000HR
- Vibration: 3.7g / Shock: 300g
- Immersion, rated: Limited water immersion for 1 hour

Materials/Finish

- Contacts: Copper alloy, gold plated
- Backshell/Housing and Lid: Aluminum or Stainless Steel
- Backshell Sealing Gasket and Interfacial Seal: Fluoroelastomer rubber
- Screws: 300 Series Stainless Steel Insulator: LCP

Table I - Shell Material/Finish

Material	Finish
Aluminum Alloy	Electroless Nickel Hard
Stainless Steel	Gold (200 Over Electroless Nickel)
Black Zinc Nickel over Electroless Nickel (Shell)	

Table II - Shell Size Contact Arrangements

Shell Size	Series	Contact Arrangement	Shell Size	Contact Arrangement
5	A	1-1	5	1-1
6	B	0-4, 0-6, 0-7	6	0-4, 0-6, 0-7
7	C	0-1, 0-2, 0-3	7	0-1, 0-2, 0-3
8	D	0-1, 0-2, 0-3, 0-4, 0-5, 0-6, 0-7	8	0-1, 0-2, 0-3, 0-4, 0-5, 0-6, 0-7
9	E	0-1, 0-2, 0-3, 0-4, 0-5, 0-6, 0-7, 0-8, 0-9	9	0-1, 0-2, 0-3, 0-4, 0-5, 0-6, 0-7, 0-8, 0-9
10	F	0-1, 0-2, 0-3, 0-4, 0-5, 0-6, 0-7, 0-8, 0-9, 0-10	10	0-1, 0-2, 0-3, 0-4, 0-5, 0-6, 0-7, 0-8, 0-9, 0-10
11	G	0-1, 0-2, 0-3, 0-4, 0-5, 0-6, 0-7, 0-8, 0-9, 0-10, 0-11	11	0-1, 0-2, 0-3, 0-4, 0-5, 0-6, 0-7, 0-8, 0-9, 0-10, 0-11
12	H	0-1, 0-2, 0-3, 0-4, 0-5, 0-6, 0-7, 0-8, 0-9, 0-10, 0-11, 0-12	12	0-1, 0-2, 0-3, 0-4, 0-5, 0-6, 0-7, 0-8, 0-9, 0-10, 0-11, 0-12
13	I	0-1, 0-2, 0-3, 0-4, 0-5, 0-6, 0-7, 0-8, 0-9, 0-10, 0-11, 0-12, 0-13	13	0-1, 0-2, 0-3, 0-4, 0-5, 0-6, 0-7, 0-8, 0-9, 0-10, 0-11, 0-12, 0-13
14	J	0-1, 0-2, 0-3, 0-4, 0-5, 0-6, 0-7, 0-8, 0-9, 0-10, 0-11, 0-12, 0-13, 0-14	14	0-1, 0-2, 0-3, 0-4, 0-5, 0-6, 0-7, 0-8, 0-9, 0-10, 0-11, 0-12, 0-13, 0-14
15	K	0-1, 0-2, 0-3, 0-4, 0-5, 0-6, 0-7, 0-8, 0-9, 0-10, 0-11, 0-12, 0-13, 0-14, 0-15	15	0-1, 0-2, 0-3, 0-4, 0-5, 0-6, 0-7, 0-8, 0-9, 0-10, 0-11, 0-12, 0-13, 0-14, 0-15
16	L	0-1, 0-2, 0-3, 0-4, 0-5, 0-6, 0-7, 0-8, 0-9, 0-10, 0-11, 0-12, 0-13, 0-14, 0-15, 0-16	16	0-1, 0-2, 0-3, 0-4, 0-5, 0-6, 0-7, 0-8, 0-9, 0-10, 0-11, 0-12, 0-13, 0-14, 0-15, 0-16
17	M	0-1, 0-2, 0-3, 0-4, 0-5, 0-6, 0-7, 0-8, 0-9, 0-10, 0-11, 0-12, 0-13, 0-14, 0-15, 0-16, 0-17	17	0-1, 0-2, 0-3, 0-4, 0-5, 0-6, 0-7, 0-8, 0-9, 0-10, 0-11, 0-12, 0-13, 0-14, 0-15, 0-16, 0-17
18	N	0-1, 0-2, 0-3, 0-4, 0-5, 0-6, 0-7, 0-8, 0-9, 0-10, 0-11, 0-12, 0-13, 0-14, 0-15, 0-16, 0-17, 0-18	18	0-1, 0-2, 0-3, 0-4, 0-5, 0-6, 0-7, 0-8, 0-9, 0-10, 0-11, 0-12, 0-13, 0-14, 0-15, 0-16, 0-17, 0-18
19	O	0-1, 0-2, 0-3, 0-4, 0-5, 0-6, 0-7, 0-8, 0-9, 0-10, 0-11, 0-12, 0-13, 0-14, 0-15, 0-16, 0-17, 0-18, 0-19	19	0-1, 0-2, 0-3, 0-4, 0-5, 0-6, 0-7, 0-8, 0-9, 0-10, 0-11, 0-12, 0-13, 0-14, 0-15, 0-16, 0-17, 0-18, 0-19
20	P	0-1, 0-2, 0-3, 0-4, 0-5, 0-6, 0-7, 0-8, 0-9, 0-10, 0-11, 0-12, 0-13, 0-14, 0-15, 0-16, 0-17, 0-18, 0-19, 0-20	20	0-1, 0-2, 0-3, 0-4, 0-5, 0-6, 0-7, 0-8, 0-9, 0-10, 0-11, 0-12, 0-13, 0-14, 0-15, 0-16, 0-17, 0-18, 0-19, 0-20
21	Q	0-1, 0-2, 0-3, 0-4, 0-5, 0-6, 0-7, 0-8, 0-9, 0-10, 0-11, 0-12, 0-13, 0-14, 0-15, 0-16, 0-17, 0-18, 0-19, 0-20, 0-21	21	0-1, 0-2, 0-3, 0-4, 0-5, 0-6, 0-7, 0-8, 0-9, 0-10, 0-11, 0-12, 0-13, 0-14, 0-15, 0-16, 0-17, 0-18, 0-19, 0-20, 0-21

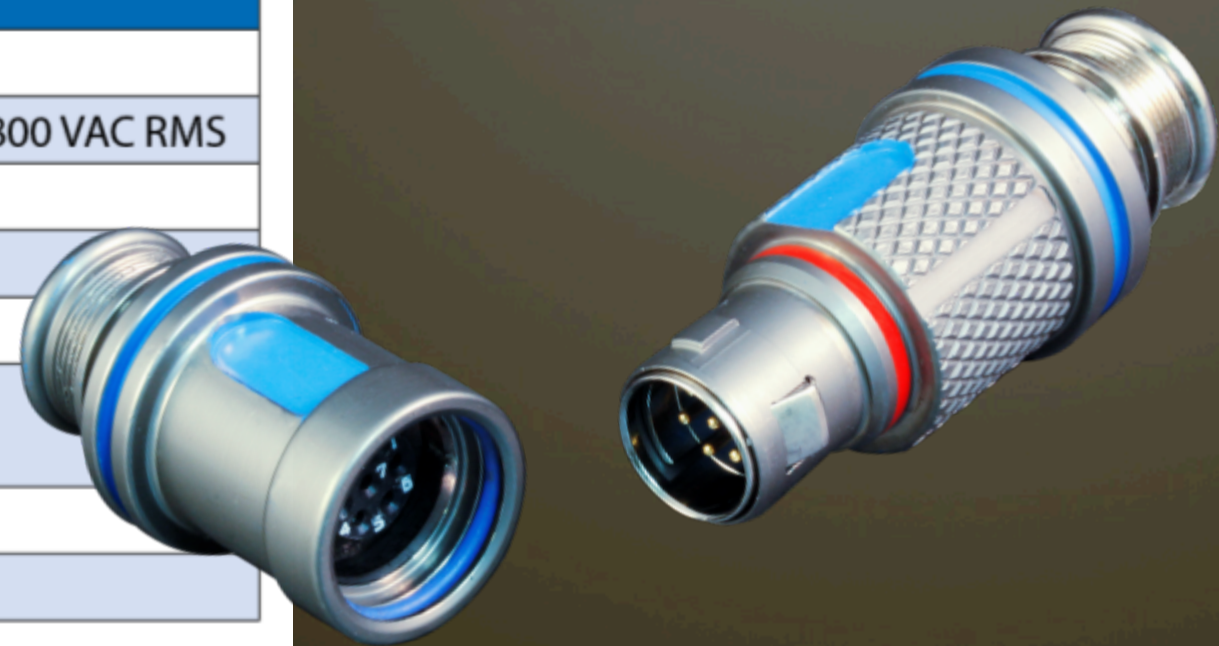
Table III - Shell Size Contact Arrangements

Shell Size	Contact Arrangement	Shell Size	Contact Arrangement
5	1-1	5	1-1
6	0-4, 0-6, 0-7	6	0-4, 0-6, 0-7
7	0-1, 0-2, 0-3	7	0-1, 0-2, 0-3
8	0-1, 0-2, 0-3, 0-4, 0-5, 0-6, 0-7	8	0-1, 0-2, 0-3, 0-4, 0-5, 0-6, 0-7
9	0-1, 0-2, 0-3, 0-4, 0-5, 0-6, 0-7, 0-8, 0-9	9	0-1, 0-2, 0-3, 0-4, 0-5, 0-6, 0-7, 0-8, 0-9
10	0-1, 0-2, 0-3, 0-4, 0-5, 0-6, 0-7, 0-8, 0-9, 0-10	10	0-1, 0-2, 0-3, 0-4, 0-5, 0-6, 0-7, 0-8, 0-9, 0-10
11	0-1, 0-2, 0-3, 0-4, 0-5, 0-6, 0-7, 0-8, 0-9, 0-10, 0-11	11	0-1, 0-2, 0-3, 0-4, 0-5, 0-6, 0-7, 0-8, 0-9, 0-10, 0-11
12	0-1, 0-2, 0-3, 0-4, 0-5, 0-6, 0-7, 0-8, 0-9, 0-10, 0-11, 0-12	12	0-1, 0-2, 0-3, 0-4, 0-5, 0-6, 0-7, 0-8, 0-9, 0-10, 0-11, 0-12
13	0-1, 0-2, 0-3, 0-4, 0-5, 0-6, 0-7, 0-8, 0-9, 0-10, 0-11, 0-12, 0-13	13	0-1, 0-2, 0-3, 0-4, 0-5, 0-6, 0-7, 0-8, 0-9, 0-10, 0-11, 0-12, 0-13
14	0-1, 0-2, 0-3, 0-4, 0-5, 0-6, 0-7, 0-8, 0-9, 0-10, 0-11, 0-12, 0-13, 0-14	14	0-1, 0-2, 0-3, 0-4, 0-5, 0-6, 0-7, 0-8, 0-9, 0-10, 0-11, 0-12, 0-13, 0-14
15	0-1, 0-2, 0-3, 0-4, 0-5, 0-6, 0-7, 0-8, 0-9, 0-10, 0-11, 0-12, 0-13, 0-14, 0-15	15	0-1, 0-2, 0-3, 0-4, 0-5, 0-6, 0-7, 0-8, 0-9, 0-10, 0-11, 0-12, 0-13, 0-14, 0-15
16	0-1, 0-2, 0-3, 0-4, 0-5, 0-6, 0-7, 0-8, 0-9, 0-10, 0-11, 0-12, 0-13, 0-14, 0-15, 0-16	16	0-1, 0-2, 0-3, 0-4, 0-5, 0-6, 0-7, 0-8, 0-9, 0-10, 0-11, 0-12, 0-13, 0-14, 0-15, 0-16
17	0-1, 0-2, 0-3, 0-4, 0-5, 0-6, 0-7, 0-8, 0-9, 0-10, 0-11, 0-12, 0-13, 0-14, 0-15, 0-16, 0-17	17	0-1, 0-2, 0-3, 0-4, 0-5, 0-6, 0-7, 0-8, 0-9, 0-10, 0-11, 0-12, 0-13, 0-14, 0-15, 0-16, 0-17
18	0-1, 0-2, 0-3, 0-4, 0-5, 0-6, 0-7, 0-8, 0-9, 0-10, 0-11, 0-12, 0-13, 0-14, 0-15, 0-16, 0-17, 0-18	18	0-1, 0-2, 0-3, 0-4, 0-5, 0-6, 0-7, 0-8, 0-9, 0-10, 0-11, 0-12, 0-13, 0-14, 0-15, 0-16, 0-17, 0-18
19	0-1, 0-2, 0-3, 0-4, 0-5, 0-6, 0-7, 0-8, 0-9, 0-10, 0-11, 0-12, 0-13, 0-14, 0-15, 0-16, 0-17, 0-18, 0-19	19	0-1, 0-2, 0-3, 0-4, 0-5, 0-6, 0-7, 0-8, 0-9, 0-10, 0-11, 0-12, 0-13, 0-14, 0-15, 0-16, 0-17, 0-18, 0-19
20	0-1, 0-2, 0-3, 0-4, 0-5, 0-6, 0-7, 0-8, 0-9, 0-10, 0-11, 0-12, 0-13, 0-14, 0-15, 0-16, 0-17, 0-18, 0-19, 0-20	20	0-1, 0-2, 0-3, 0-4, 0-5, 0-6, 0-7, 0-8, 0-9, 0-10, 0-11, 0-12, 0-13, 0-14, 0-15, 0-16, 0-17, 0-18, 0-19, 0-20
21	0-1, 0-2, 0-3, 0-4, 0-5, 0-6, 0-7, 0-8, 0-9, 0-10, 0-11, 0-12, 0-13, 0-14, 0-15, 0-16, 0-17, 0-18, 0-19, 0-20, 0-21	21	0-1, 0-2, 0-3, 0-4, 0-5, 0-6, 0-7, 0-8, 0-9, 0-10, 0-11, 0-12, 0-13, 0-14, 0-15, 0-16, 0-17, 0-18, 0-19, 0-20, 0-21



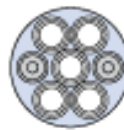
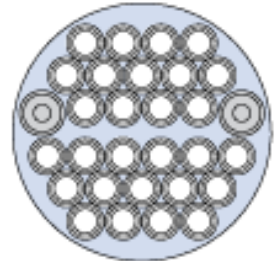
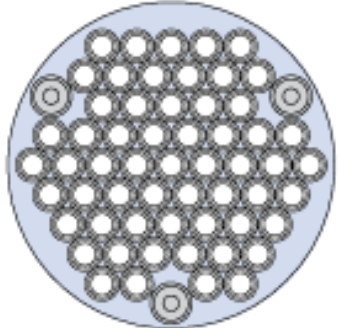
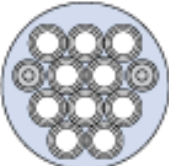
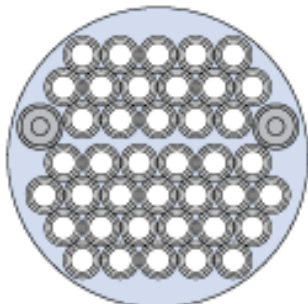
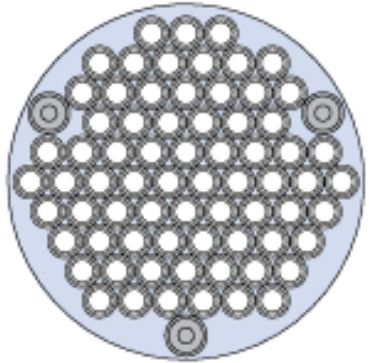
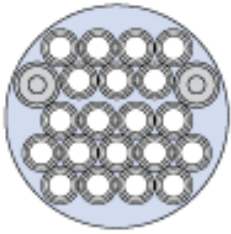
New Series 824 Mighty Mouse Locking Quick Disconnect

Specifications	
Current Rating	#23 5 AMPS, #16 13 A., #12 23 A.
Dielectric Withstanding Voltage	#23 500 VAC RMS, #12 and #16 1800 VAC RMS
Insulation Resistance	5000 megohms minimum
Operating Temperature	-65° C to +150° C
Shock / Vibration	100 g / 16 g
Shell-to-Shell Resistance, Nickel Plated	2 milliohms maximum
Durability	2000 mating cycles
Breakaway Force	60 pounds minimum





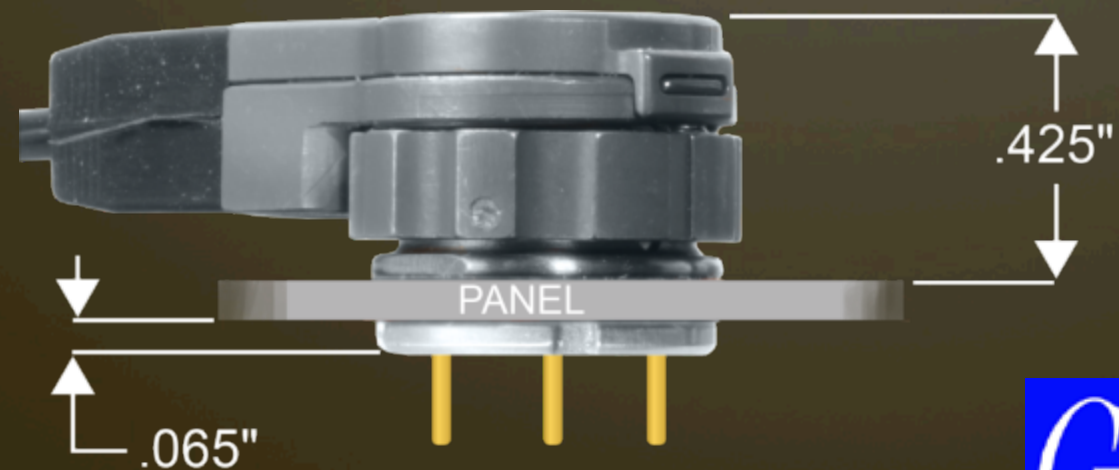
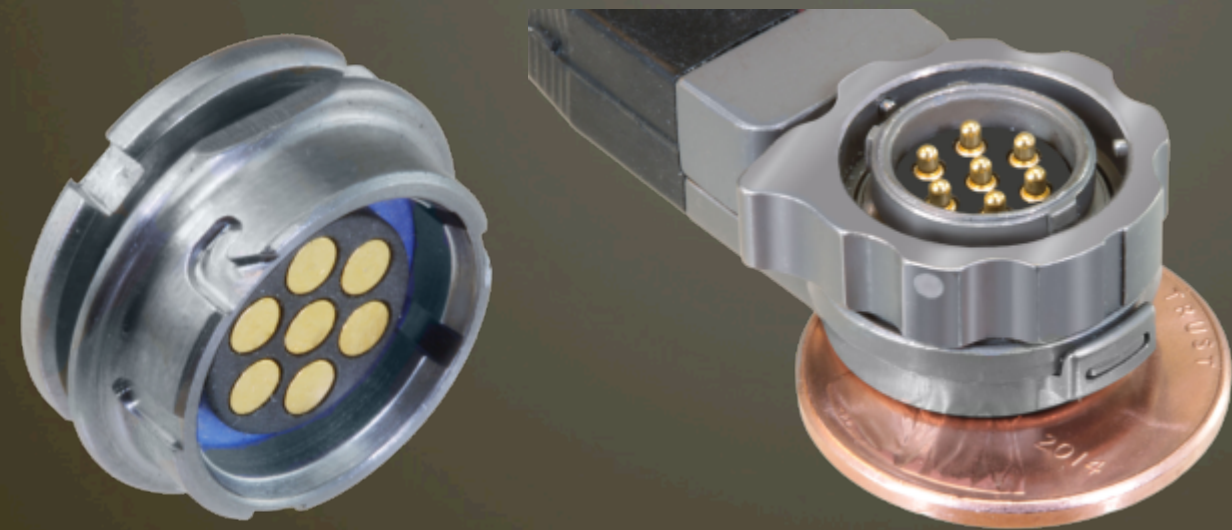
New Mighty Mouse "Stinger" Contact Arrangements

Insert Arrangements						
 <p>(2x Guide Pins)</p>	Series 841	5-5: 5x #28 Contacts	 <p>(2x Guide Pins)</p>	 <p>(3x Guide Pins)</p>		
	Series 844	5-5: 5x #28 Contacts				
	Series 845	N/A				
	Series 841	8-28: 28x #28 Contacts				Series 841
 <p>(2x Guide Pins)</p>	Series 841	6-10: 10x #28 Contacts	Series 844	8-28: 28x #28 Contacts	Series 844	10-58: 58x #28 Contacts
	Series 844	6-10: 10x #28 Contacts	Series 845	10-28: 28x #28 Contacts	Series 845	12-58: 58x #28 Contacts
	Series 841	6-10: 10x #28 Contacts	 <p>(2x Guide Pins)</p>	 <p>(3x Guide Pins)</p>		
	Series 844	6-10: 10x #28 Contacts				
Series 845	8-10: 10x #28 Contacts					
Series 841	7-20: 20x #28 Contacts	Series 841				9-40: 40x #28 Contacts
 <p>(2x Guide Pins)</p>	Series 841	7-20: 20x #28 Contacts	Series 844	9-40: 40x #28 Contacts	Series 844	11-71: 71x #28 Contacts
	Series 844	7-20: 20x #28 Contacts	Series 845	11-40: 40x #28 Contacts	Series 845	13-71: 71x #28 Contacts
	Series 841	7-20: 20x #28 Contacts				
	Series 844	7-20: 20x #28 Contacts				
Series 845	9-20: 20x #28 Contacts					

New Series 80 Mouse-Bud™

Vest-wearable or cable-to-cable tactical pogo pin Mighty Mouse

- IP67, spring contact interface
- 5 Amps
- Nano Band
- 2500 mating cycles
- Cobra style plug for optimum EMI
- PC tail or solder cup receptacle
- In-line, square flange in process
- Flex assy for wire organization



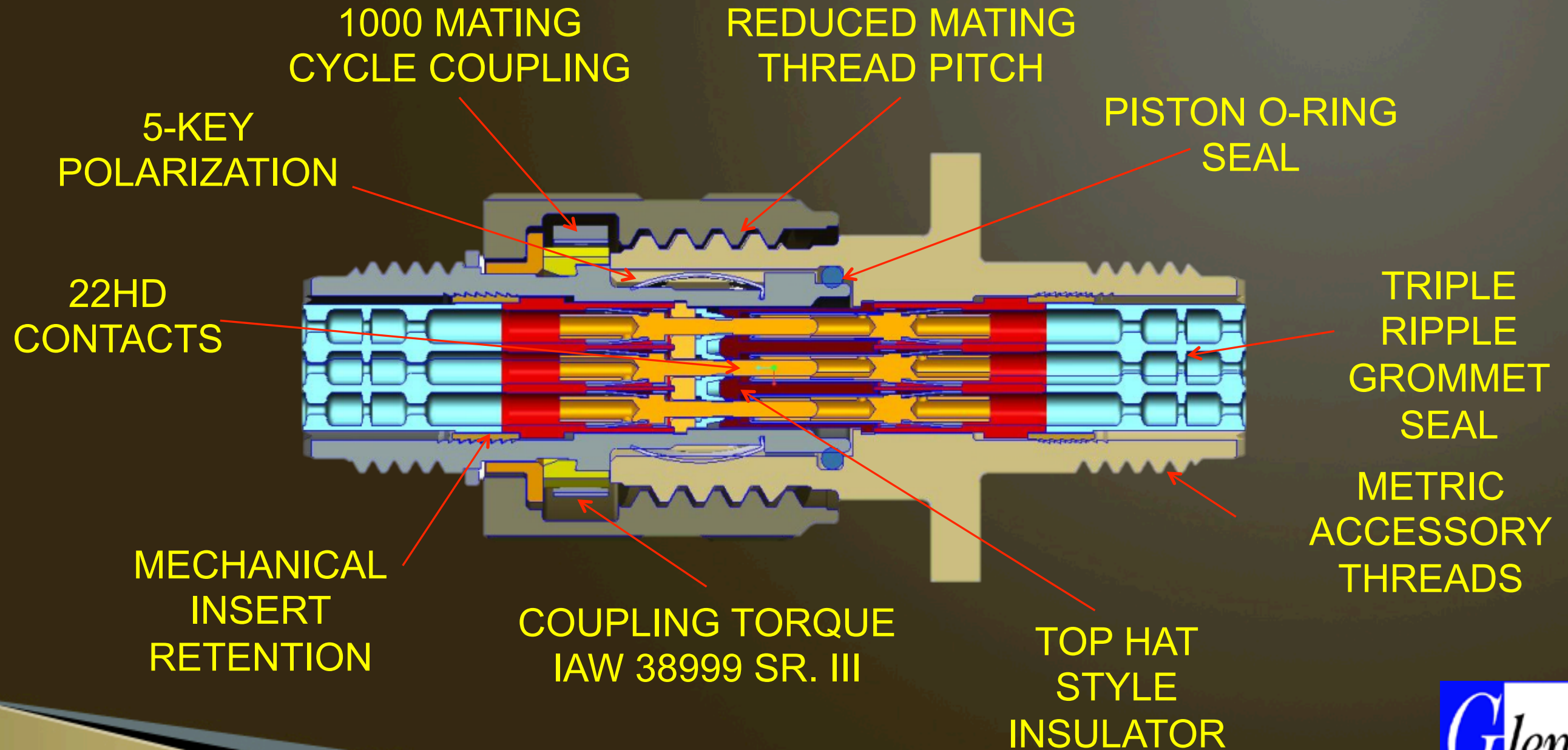
New Mighty Mouse Aerospace Connector

True 38999 performance in a reduced size and weight package

- Signal/sensor interconnect used in both pressurized and non-pressurized airframe applications
- Meets key 38999 performance benchmarks (altitude immersion, vibration and shock, mating durability)
- Replaces legacy large form-factor connector series (38999, 5015, 26482)



New Mighty Mouse Aerospace Connector



New Mighty Mouse Aerospace Connector

Product Advantages

- Significant EWIS size and weight savings
- Eliminates decoupling, particularly in small shell sizes
- Faster installation and routing of harness assemblies due to reduced form-factor
- Innovative mechanical design delivers enhanced corrosion protection and longer life for lower total installed cost



El Ochito

“The Little Eight:” 10G Ethernet Ready

- Glenair solution
- Dramatic size and weight reduction when wire and connector packaging is included
- 100% Drop-in solution for 38999, ARINC and Mighty Mouse
- Twice the density of Quadrax, Split Quadrax or other shielded solutions



El Ochito® Versus Quadrax

PIC DataMates Lite: 50% Lighter than Tensolite Solution

GLENAIR SUPPLIED CABLE FOR EL OCHITO® APPLICATIONS

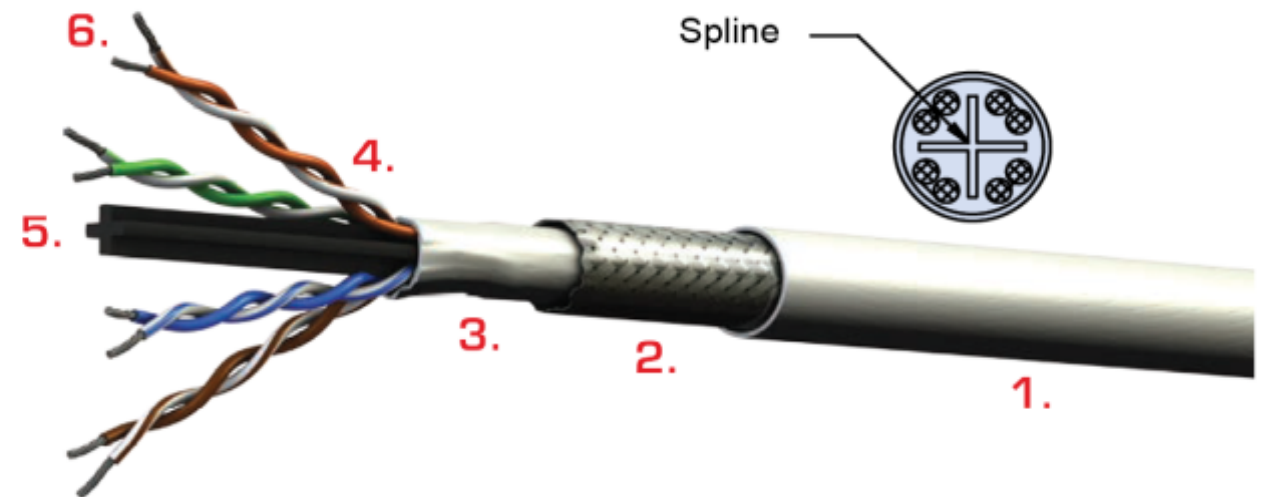
963-003-26

CABLE PHYSICAL DATA

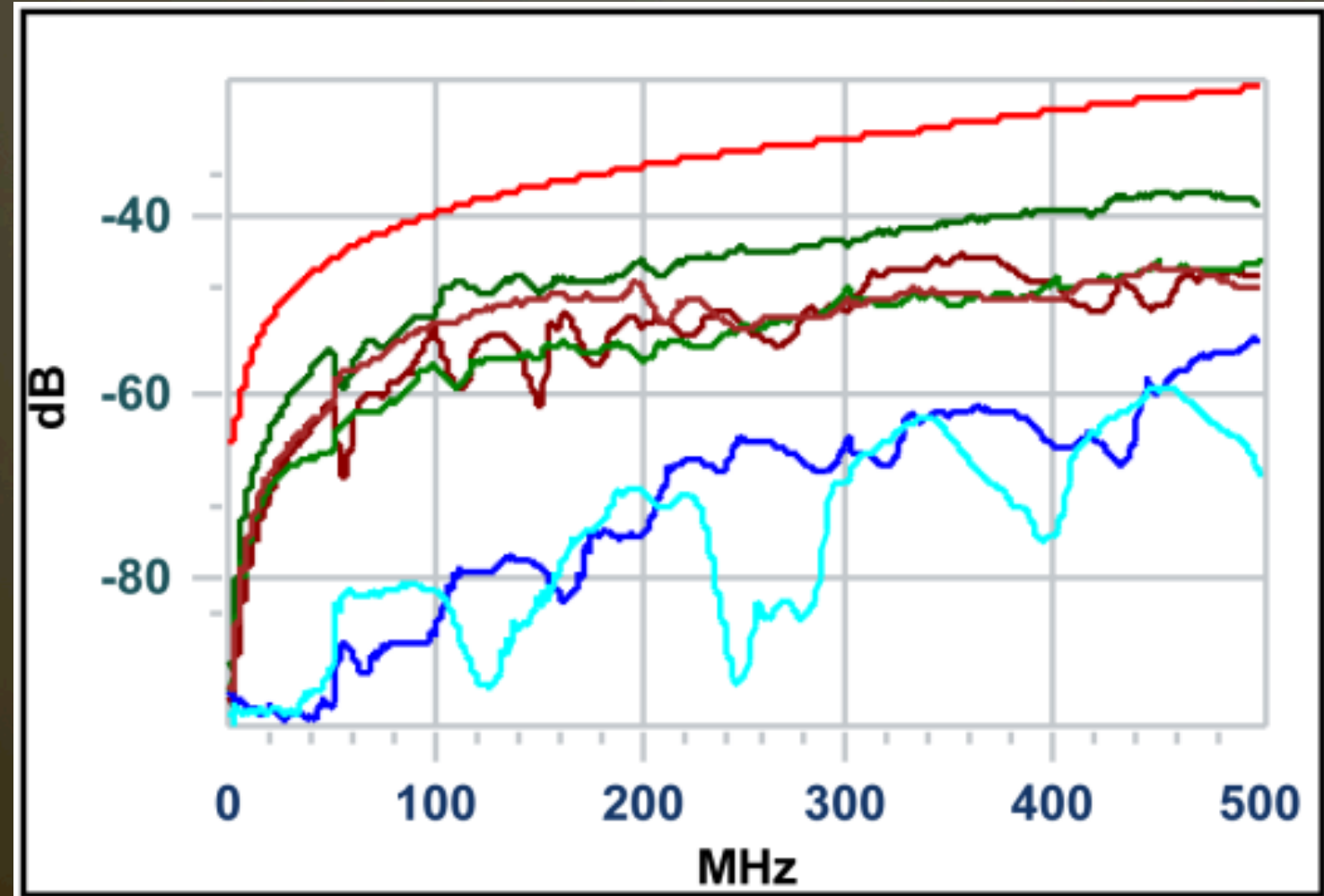
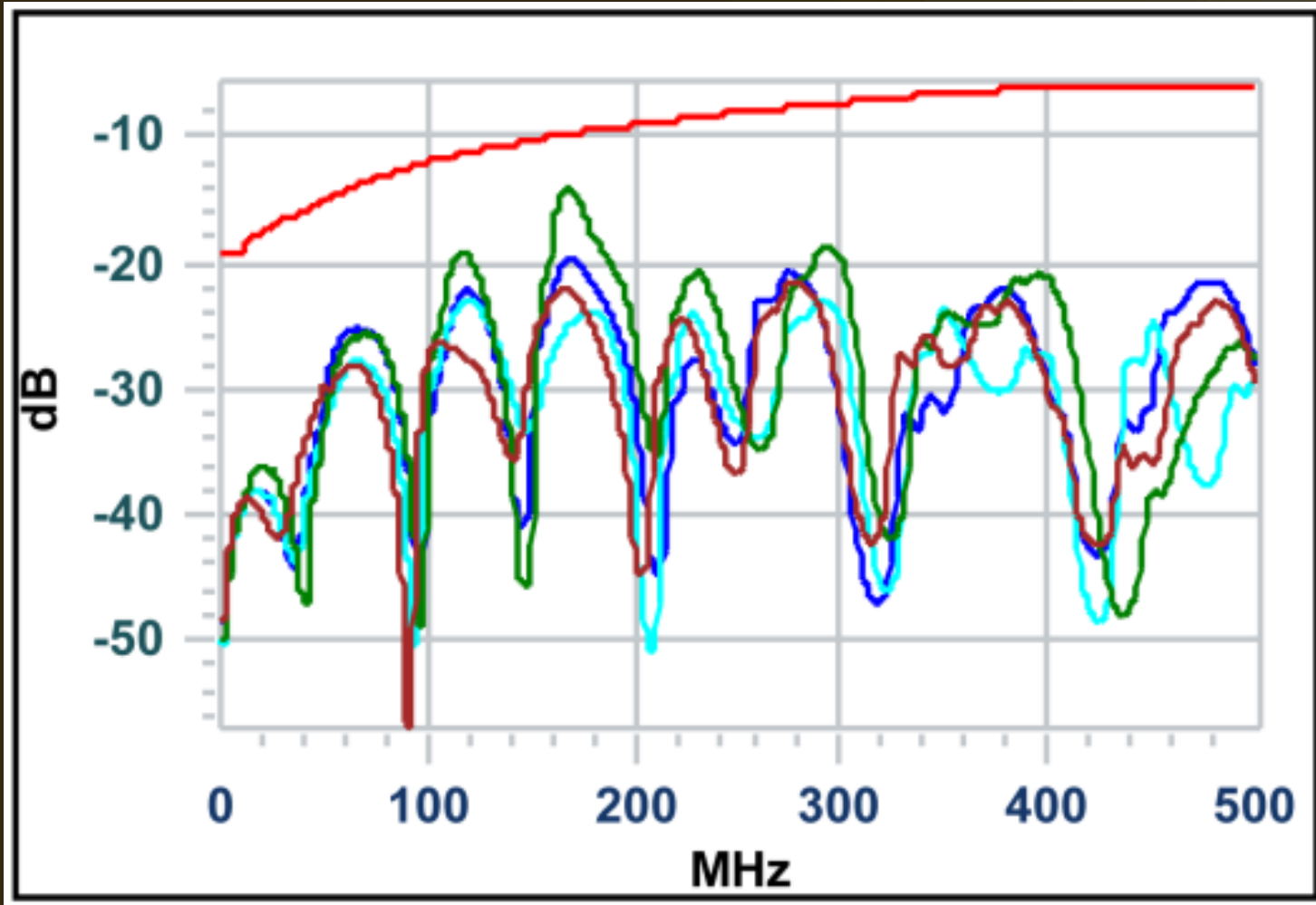
- Conductors: 26AWG stranded SPC
- Shield coverage: 80% (braid)
- Temperature: -55°C to +200°C
- Outer diameter: 0.220 (5.588mm)
- Minimum bend radius: 1.13 (78.702mm)
- Weight (lbs/100 ft): 3.05 (4.54 kg/100m)

CABLE CONSTRUCTION

1. White PTFE laser-printable jacket
2. Silver-plated copper shield
3. Fluoropolymer tape
4. PFA insulation
5. Fluoropolymer spline
6. Silver-plated copper conductors

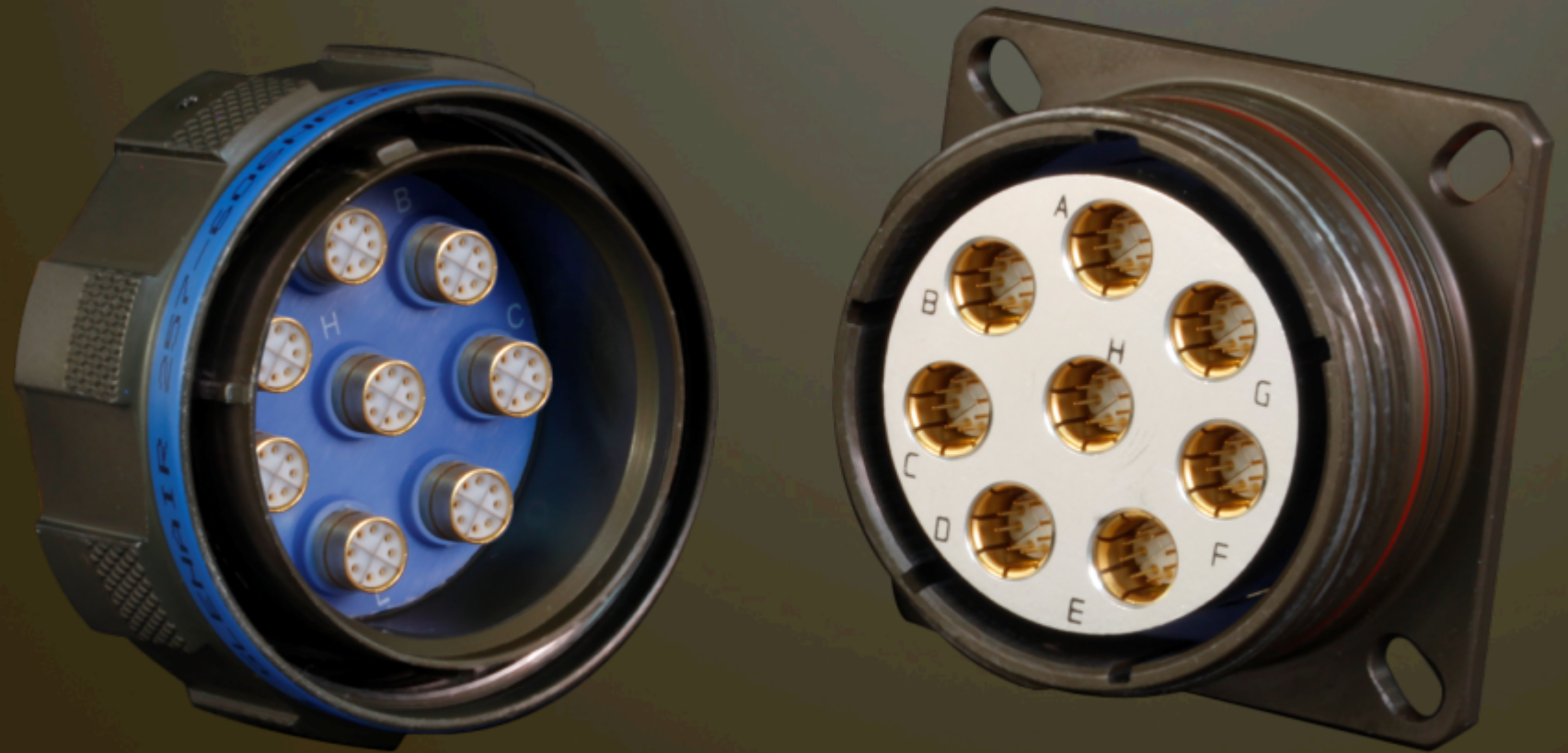


El Ochito[®] Performance

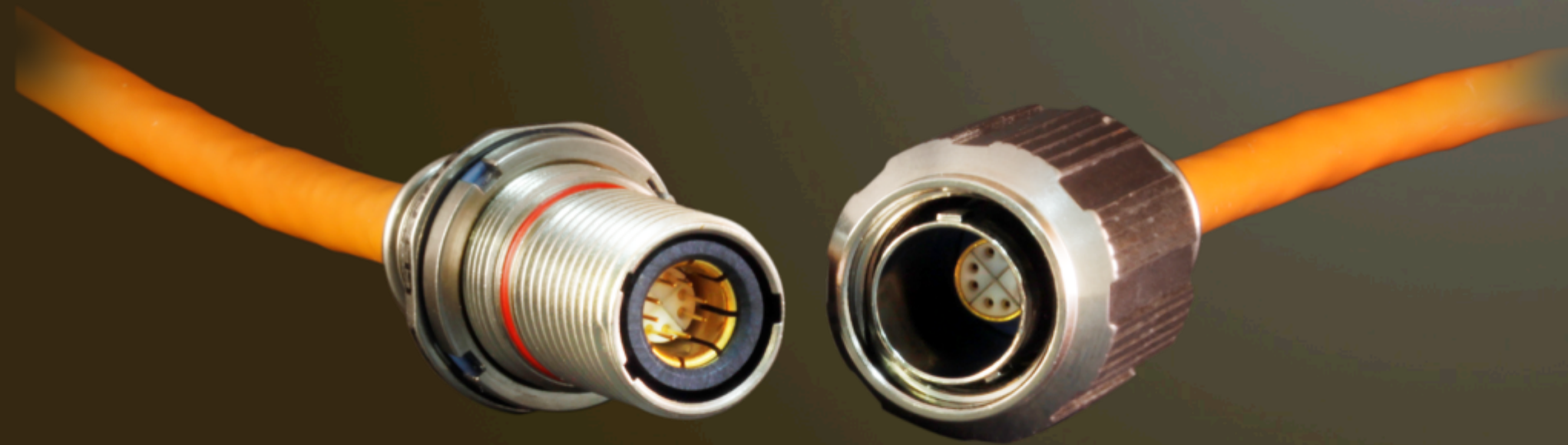


El Ochito Connector Packaging

*SuperNine
(MIL-DTL-38999
Series III)
El Ochito*



El Ochito Connector Packaging



Mighty Mouse El Ochito



El Ochito Connector Packaging



Series 79 El Ochito



Glenair Opto-Electronics

Inside the box



At the panel

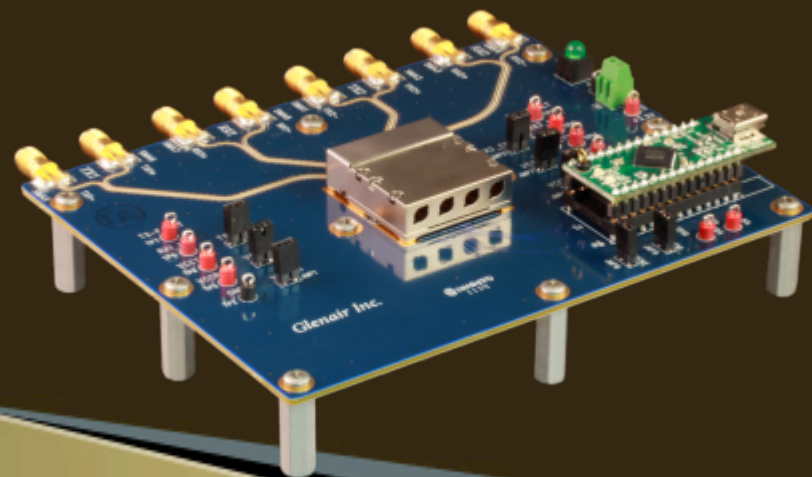
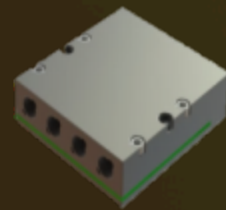
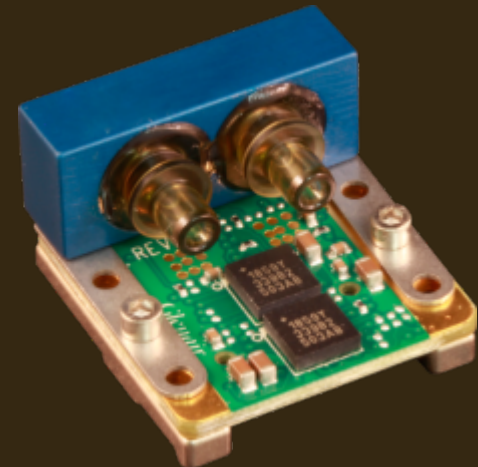


Outside the box



Inside the Box

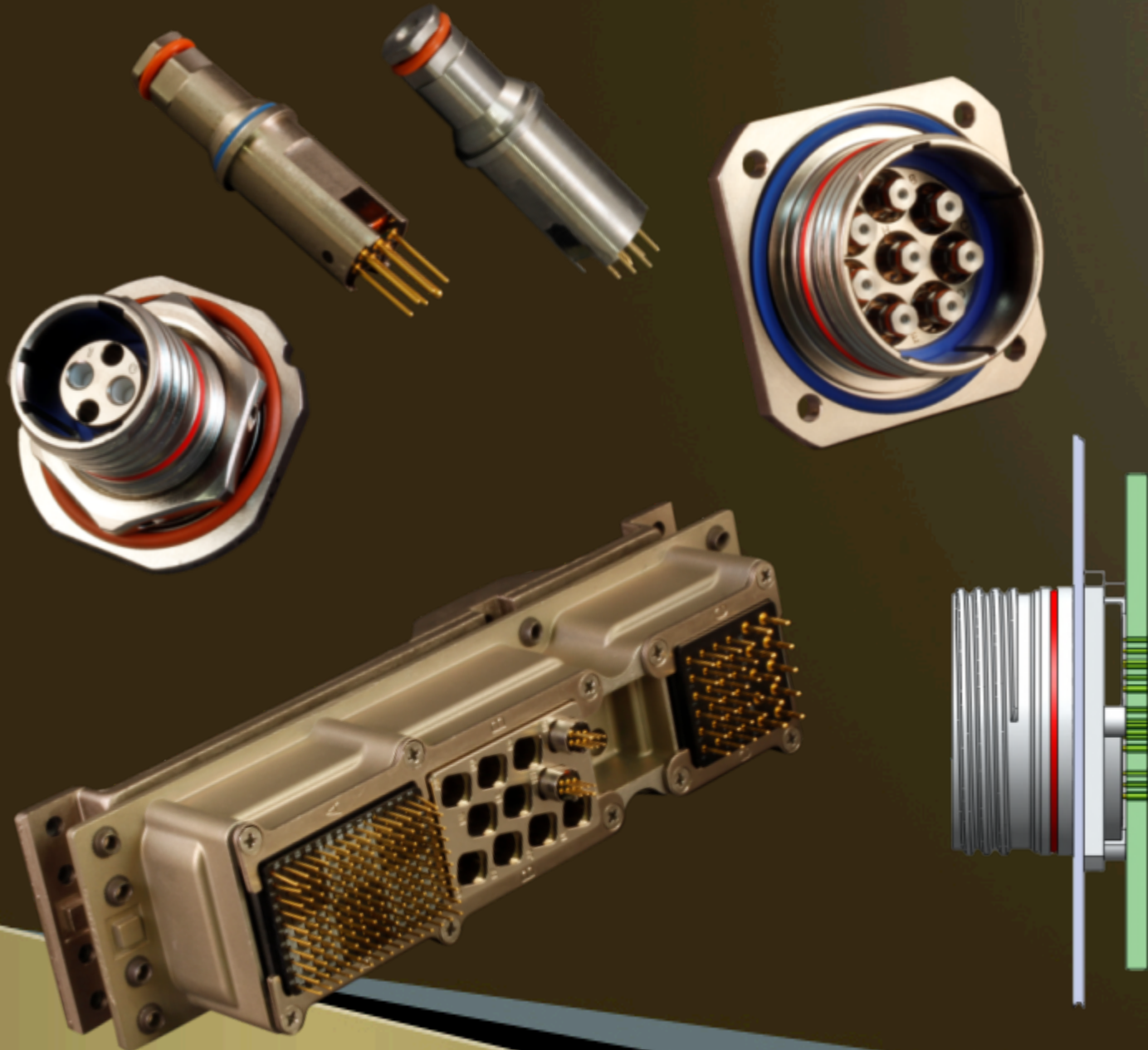
PCB-Mounted E-O Modules (XCVR, TX, RX)



- Up to 12.5 Gbps,
- SMF & MMF Solutions
- Pluggable, Small & Rugged
- Solutions with ALL Glenair fiber-optic connector and cable types

At the Panel

Input/Output E-O Conversion

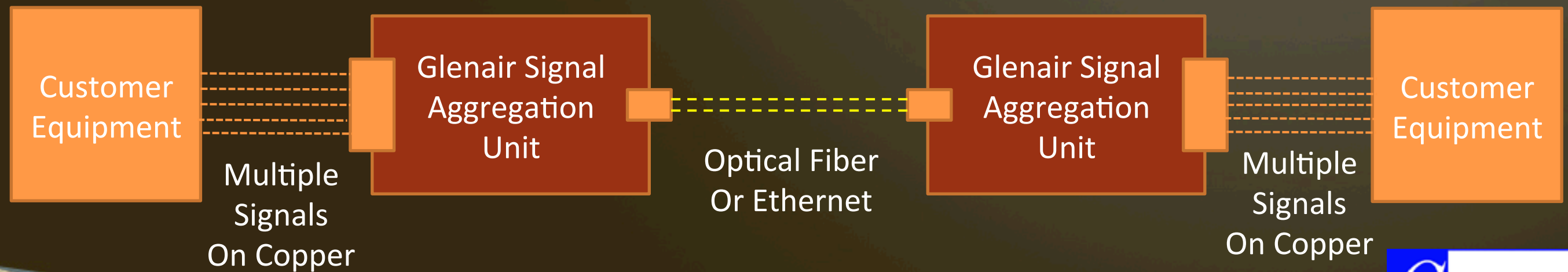


- Conversion in the Connector
 - Permits legacy upgrades
 - No need for Fiber “Inside the Box”
- Up to 5 Gbps today
- Ethernet, Video, etc.
- Available NOW

Outside the Box

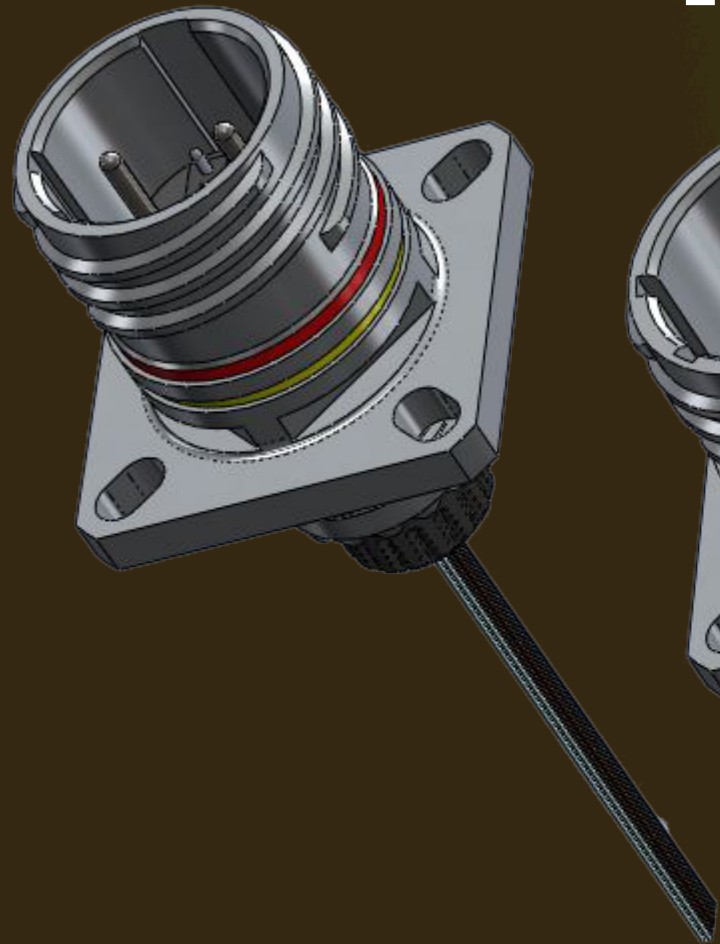
E-O Media Converters

- Ethernet MC
- Video MC
- Aggregation MC

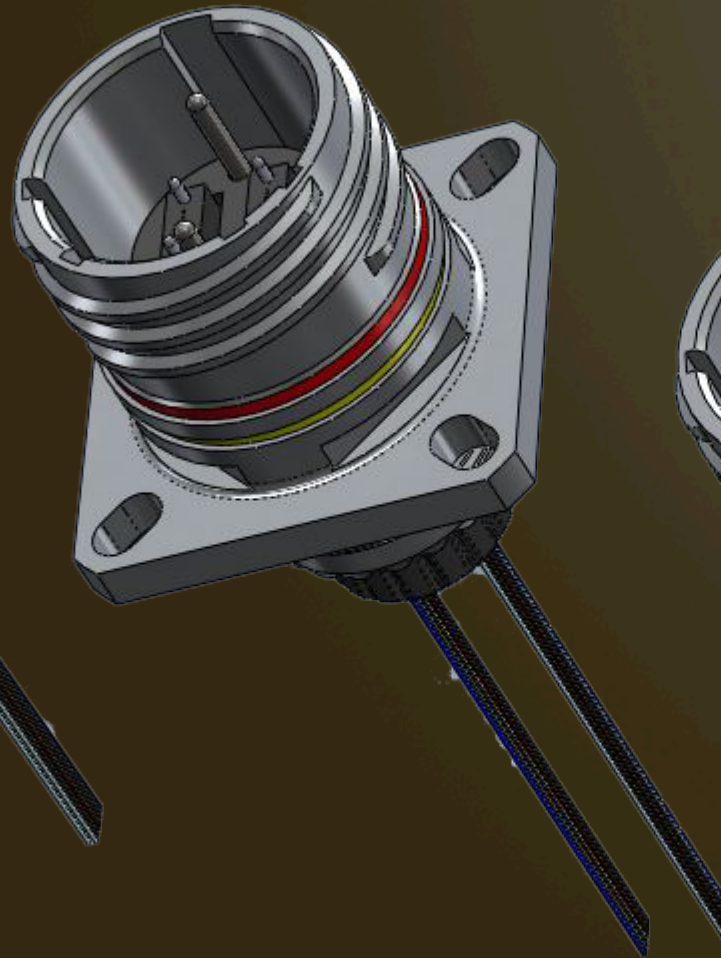


New MTG D38999 F/O Connector

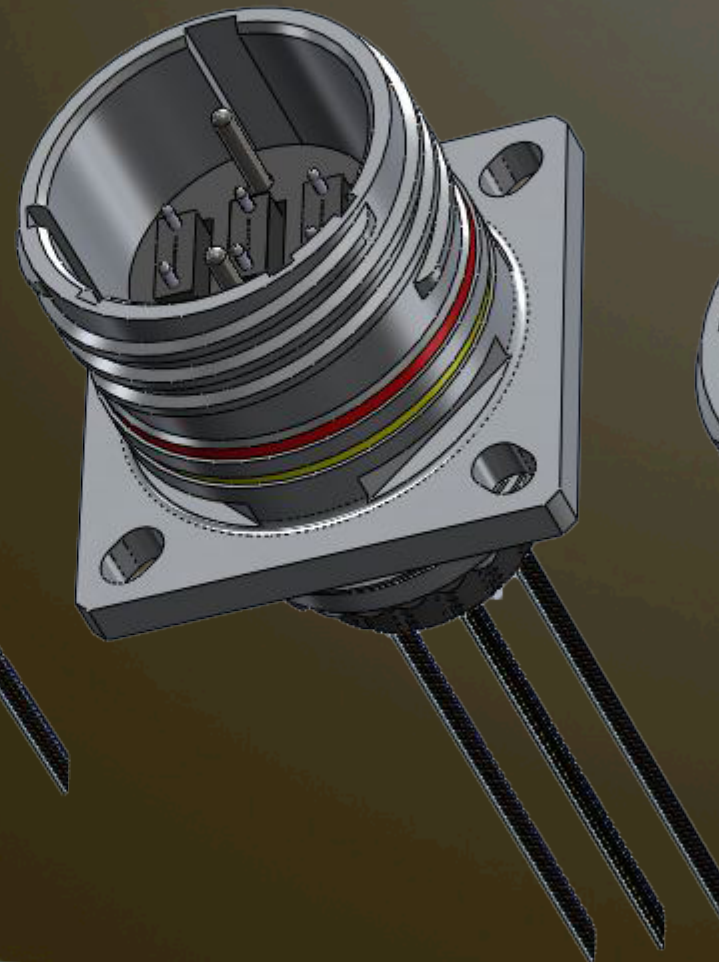
Size 11
1 MT ferrule
(12 fibers)



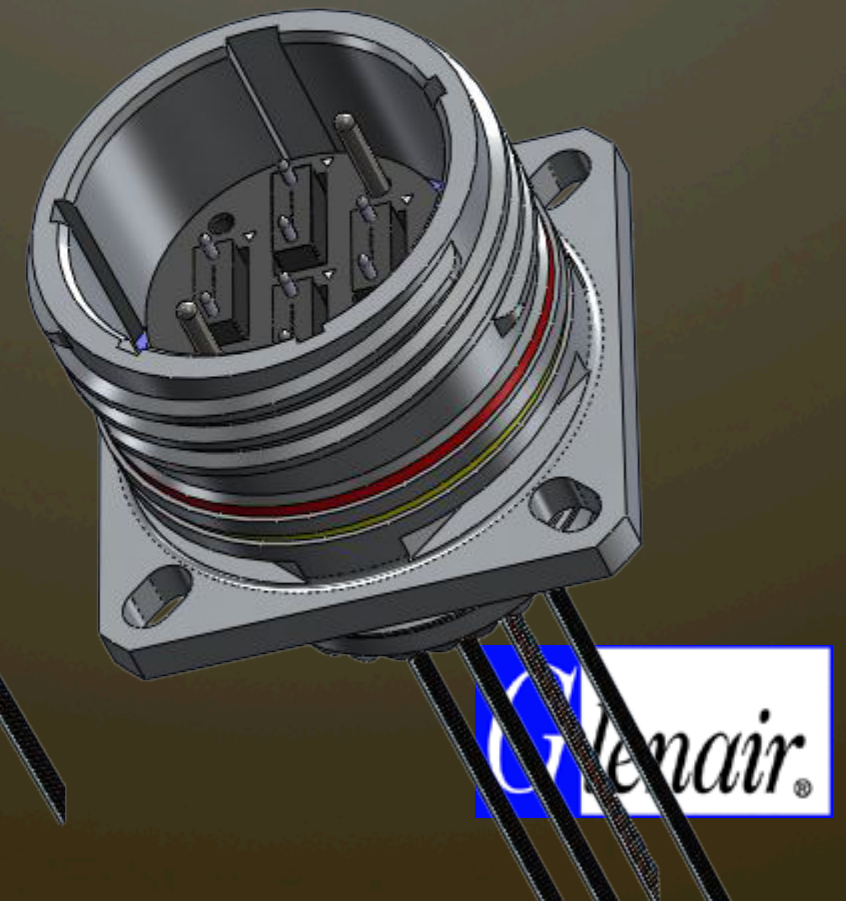
Size 11
2 MT ferrules
(24 fibers)



Size 15
3 MT ferrules
(36 Fibers)



Size 15
4 MT ferrules
(48 Fibers)



GMA (HMA Type) Expanded Beam

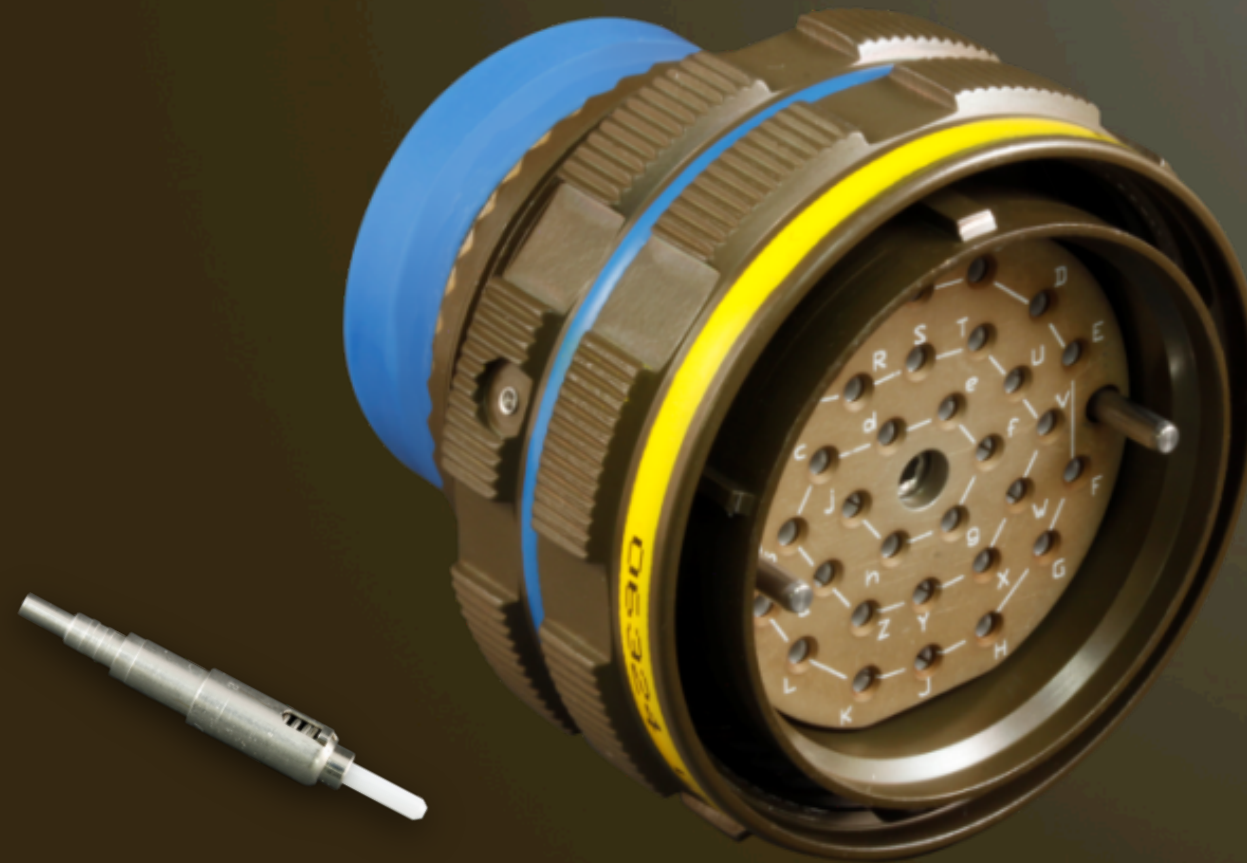
Glenair Series 185-002 IAW M83526/20 and /21

- Single and multimode
- Hermaphroditic
- Intermateable with all M83526/20 and /21 connectors
- 2 and 4 channel arrangements



ARINC 801 Avionics Connectors

ARINC 801 Circular Connectors, all shell sizes



GMLM = MasterLatch™ Locking Micro-D

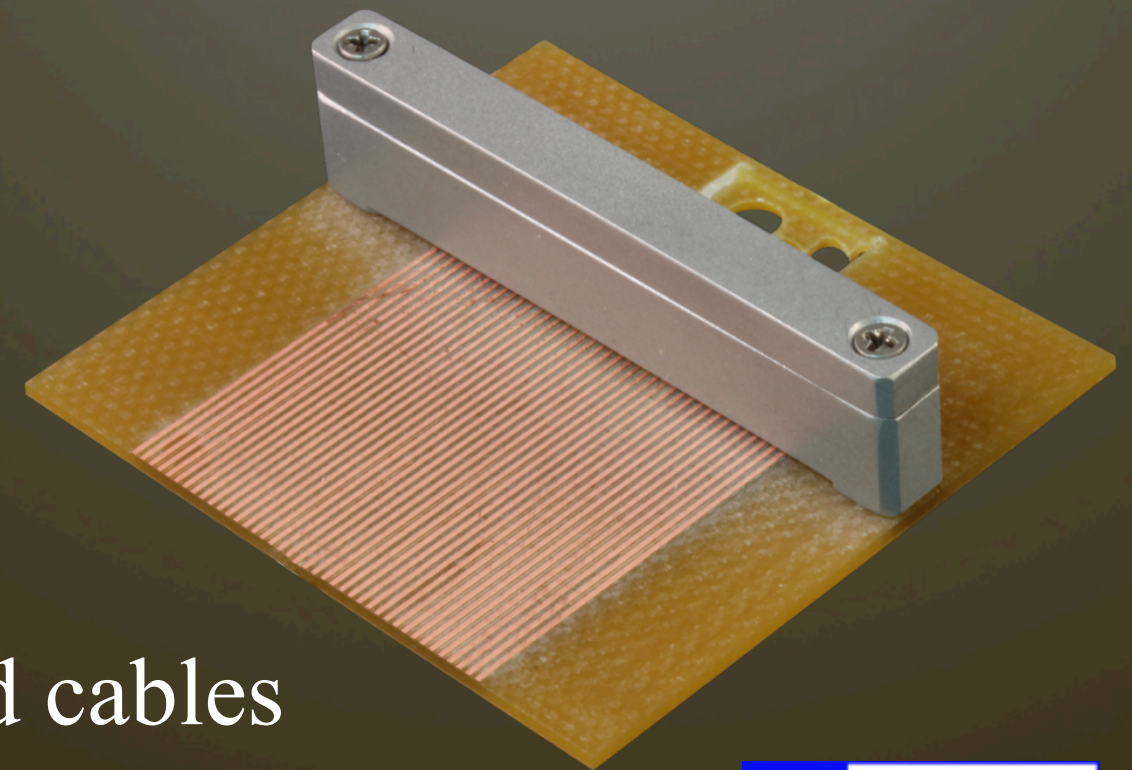
Low Insertion Force Thumb-Latch Micro-D

- Plug connector with latch (size 9 – 37)
- Receptacles
 - In-line,
 - Circuit Board
 - Rear Panel Mount



AlphaLink: High-Performance Board Connector

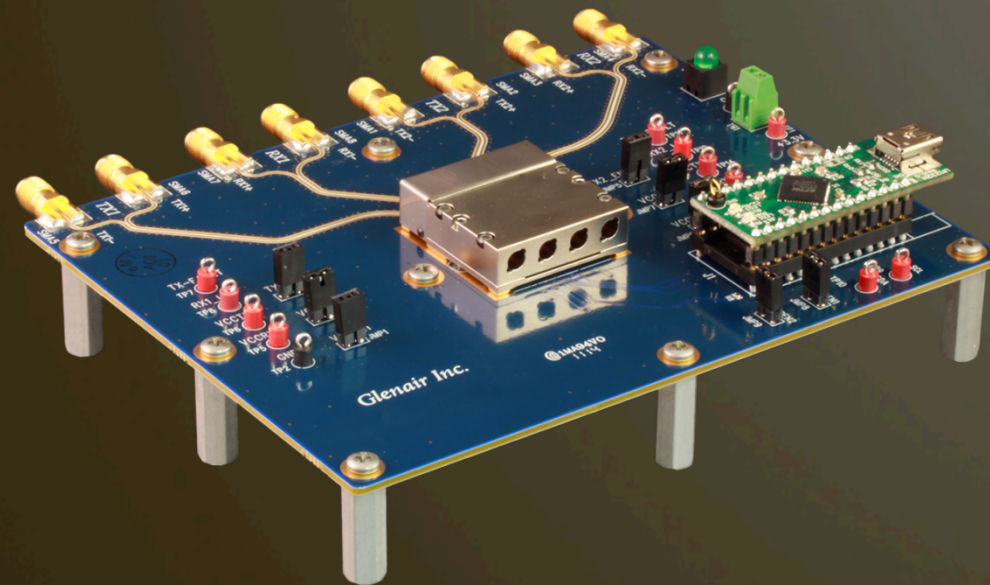
- Low Profile pogo-pin headers
- Surface-mount and PC tail connectors
- High-density .050 centers
- Avionic shock/vibration
- Tolerate solder reflow
- 2-3 Amp current rating
- Can be terminated to both flex, PCB's and cables



Flex/PCB Interconnect Assemblies



Flex
Assemblies



Rigid Board
Assemblies



Rigid Flex
Assemblies

Advanced Materials and Platings

- Weight savings
- Reduced maintenance and repair
- Longer system life
- Improved functionality (for example, connector mating)
- Standards compliance



Conductive Composite Backshell



Microfilament SS Ground Strap



Plated Composite Shielding



Nickel-PTFE PowerTrip connector



Teflon-Insert Ethernet Connectors



Extended-Durability Gold Contacts



New Interconnect Solutions Seminar - 2015