



IEEE Institute of Electrical and Electronic Engineers
Virginia Council

Membership Report
28 April 2002

1. Current.

No significant events to report for the past quarter.

2. Future.

Participating in recruiting efforts at the local colleges during summer and fall when schools hold student member drives.

3. Membership Totals.

Been reprocessing membership data for since April 2001 in order to put together a picture of membership activity for the state for the four Region 3 Virginia sections. I have decided on how best to gain similar data for Northern Virginia at the moment. To date, I have processed through November 2001. Present total membership is 5101 plus Northern Virginia.

It was asked if I could provide membership totals such information in graphical form instead of in tabular form. On page two of this report is a graph, with legend, showing membership totals for June 2001, September 2001, December 2001, and March 2002. Northern Virginia is not included.

Membership totals for each reported period:

	Jun 2001	Sep 2001	Dec 2001	Mar 2002
R30909	980	999	1035	1070
R30923	1265	1319	1361	1494
R30959	1332	1353	1367	1401
R30965	946	1010	1070	1136
	----	----	----	----
	4523	4569	4833	5101

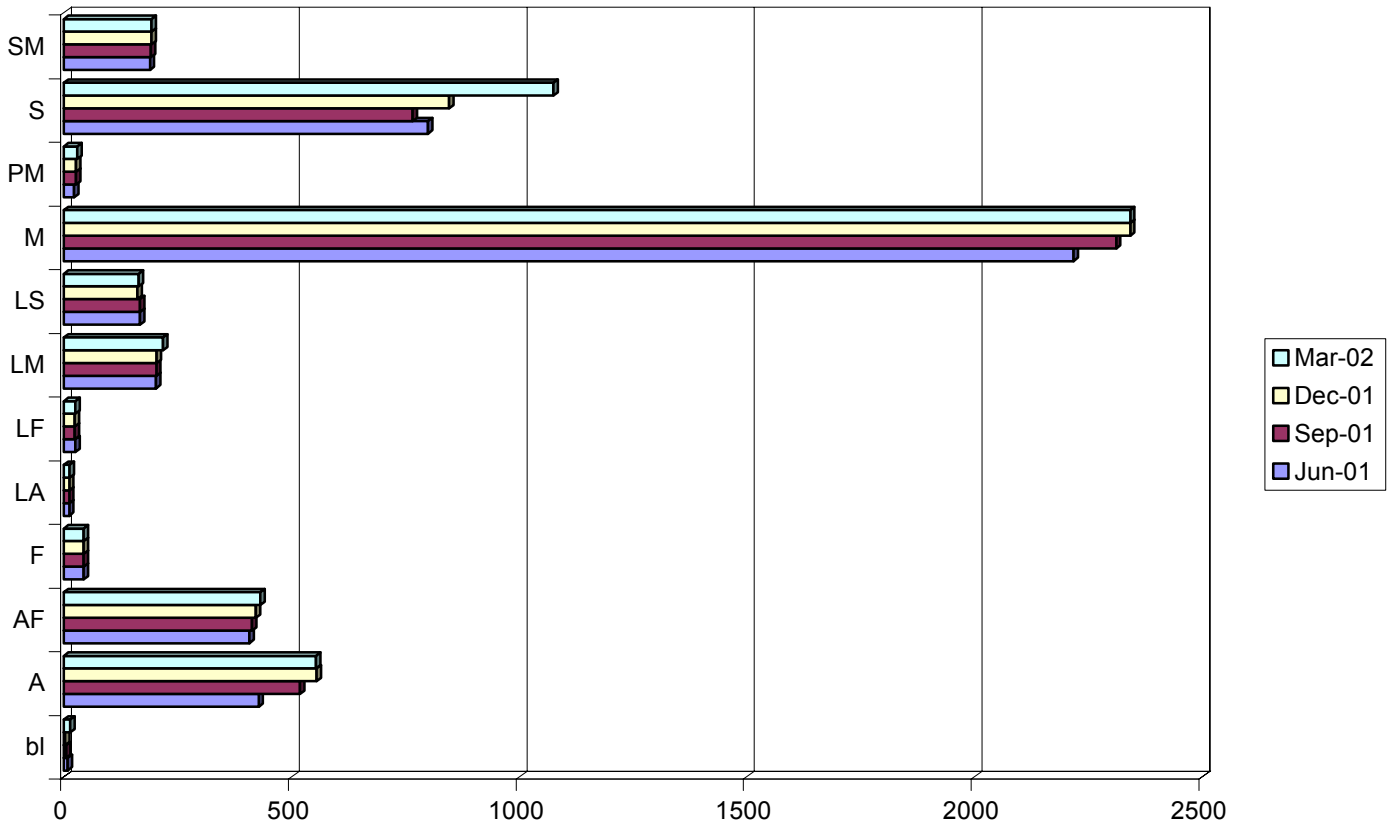
For the March 2001 Virginia Council I reported that membership totals for the four Region 3 sections was 4604. Since then membership has increased has increase more than 10%. Northern Virginia's membership at the same meeting was reported at 9607.

Present GOLD membership numbers are:

	Central	H Roads	Northern	Richmond	Mountain	Total
Gr	R30909	R30923	R20149	R30959	R30965	
A	8	19		21	3	51
M	37	60		52	31	180
PM		4		2		6
SM	1					1
	46	83		75	34	238

Membership Report
28 April 2002

R309 Member Count by Grade



bl new record
A Associate
AF Affiliate
F Fellow
LA Life Associate
LF Life Fellow
LM Life Member
LS Life Senior Member
M Member
PM Pending Member
S Student
SM Senior Member

William M. LaBelle, Jr.
Membership, IEEE Virginia Council
w.labelle@ieee.org