

2010 Tri-Section Officer Training Workshop

***Finding Your Way in IEEE:
How Your Chapter Relates to its
Society, Section, & Council
or
What did I get myself into?***

**Bill DeHope
OEB Chair**

January 23, 2010

*Michael's Restaurant
Shoreline Drive and Amphitheater
Mountain View, CA*



What is the IEEE?

- **The World's largest (~360,000) technical professional society**

*>800 active standards; >100 periodicals; >300 conferences/year
30% of the world's knowledge*

- **Our charter:**

"Scientific advancement and diffusion of knowledge"

"Advancement of the profession" (enable members' careers)

"Use skills to enhance the quality of life for all people"

- **Our strengths:**

Peer-reviewed Transactions, practical publications, newsletters

International conferences & workshops, published proceedings

40 active technical Societies & 6 Technical Councils

Local 1500 chapters in 307 sections; grassroots member involvement

Professional advancement, support; networking; career benefits



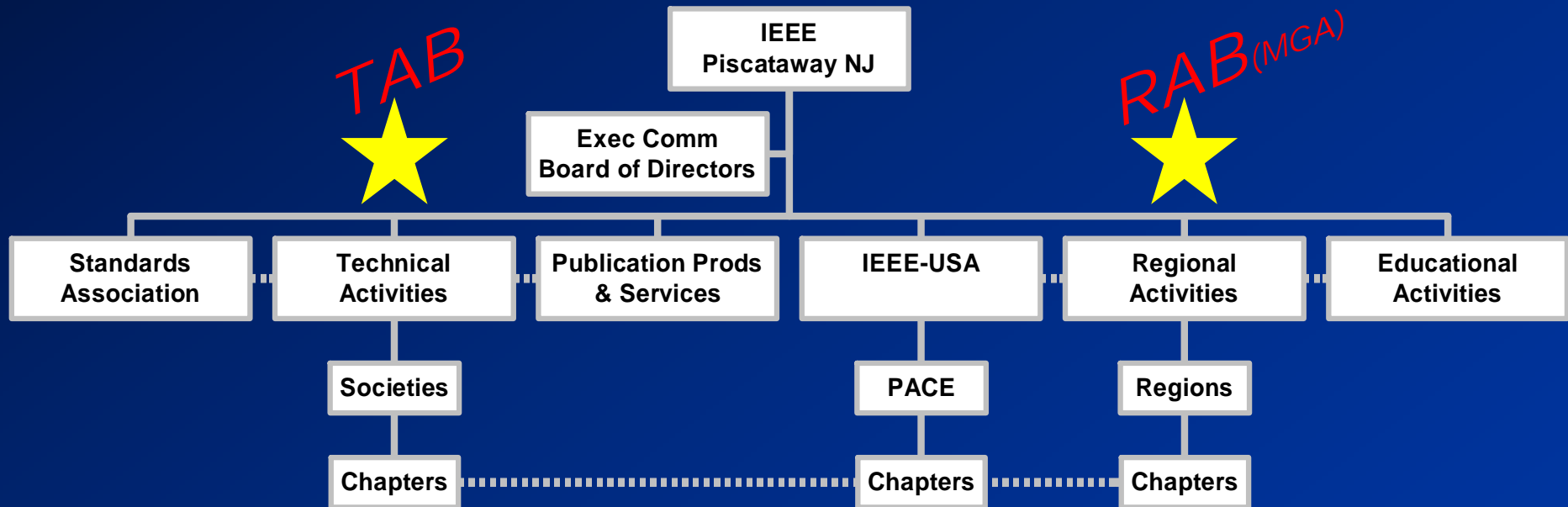
You are part of something big!

What are the IEEE's “entities”?

(Finding yourself in the alphabet soup)

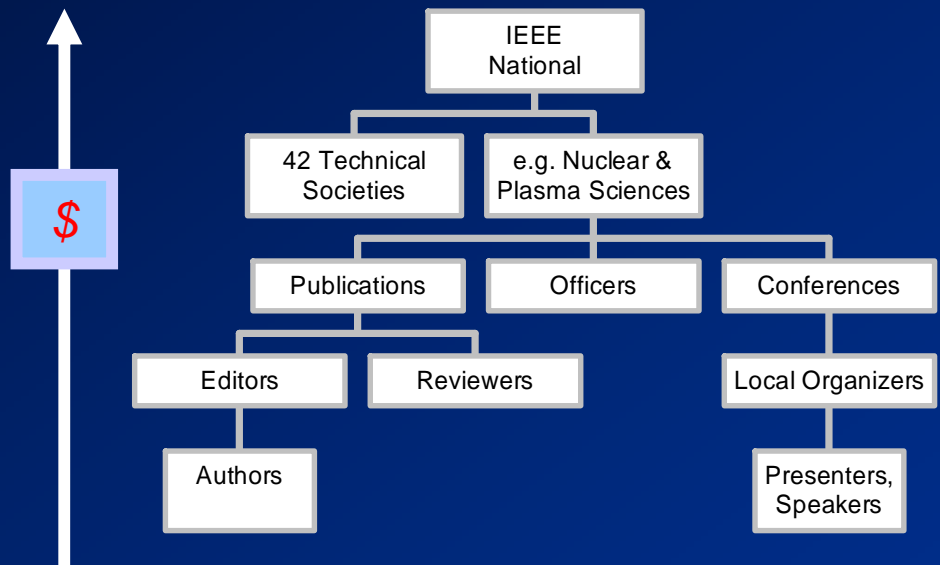
- Societies
 - Communications, Computer, NPSS, etc
 - Active at the national (journals, conferences) level
 - Active at the local (chapter) level ❤️
- Geographic entities
 - Regions, Areas, Sections, Councils, Chapters ❤️
- Student Branches
 - Berkeley, Stanford, etc
 - *Can* have technical chapters
- Affinity Groups
 - GOLD, WiE, Consultants Network, Life Members
- National entities
 - PACE, IEEE-USA, TISP, etc.

Who is the IEEE?

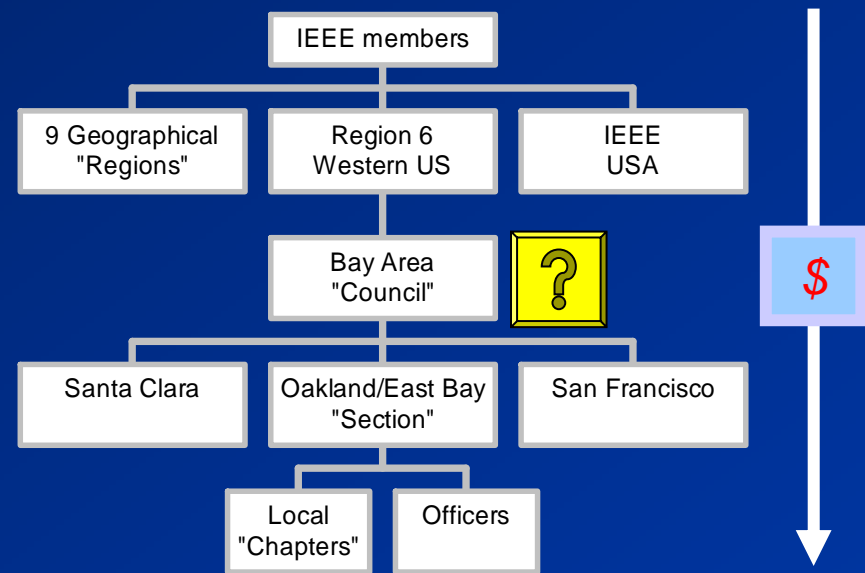


- *How can chapters be in 3 places at once?*
- *See why they're the ❤️ of IEEE?*

The to understanding IEEE organization:



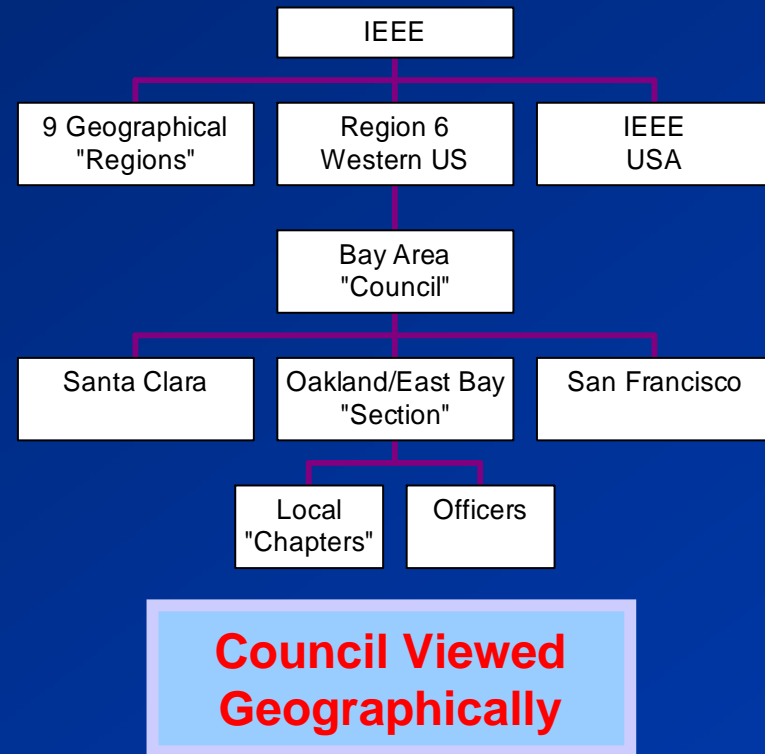
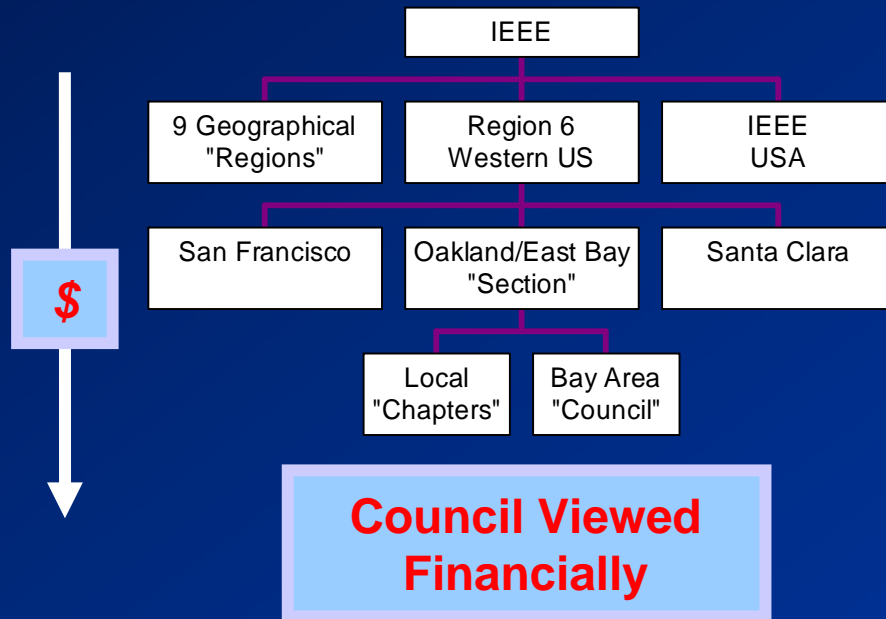
Viewed "Technically"
The Technical Activities Board



Viewed Geographically
The Regional Activities Board
(Now Member & Geographic Activities Board)

What is an IEEE Council?

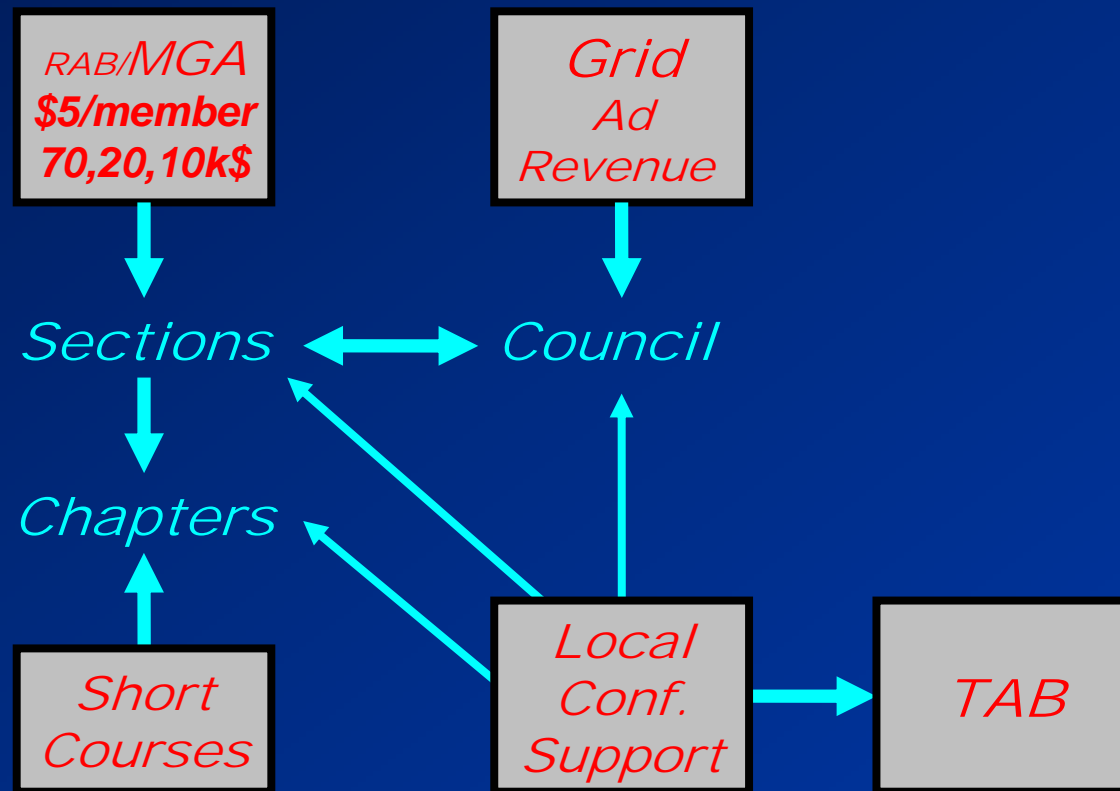
- “An optional collaboration of contiguous sections”
- The San Francisco Bay Area Council consists of:
 - Santa Clara Valley Section
 - Oakland/East Bay Section
 - San Francisco Section



SFBAC's checkered past...

- SFBAC was initially founded in the 1950's
- Along with LAC, we sponsored a trade show called **Wescon**
- Throughout the 1960's & 70's, Wescon was phenomenally successful and made lots of M\$
- The love of money became a root of much evil:
 - Council rented its own office space and hired a full-time secretary
 - Section rebates were directly-deposited to Council's account
 - Sections became subservient to Council
- In the 1990's, the Internet boomed and trade shows busted. Judgment Day cometh to Wescon, and to SFBAC.
- In 2005, Council was re-formed. It's MoU limits all funds to a year's budget. Excesses flow to the Sections.

A little about SFBAC & money...



- Rules

- An entity's cash-on-hand $< \pi$ Yearly Budget (rule-of-thumb)
- Audits if a Section's cash-on-hand > 100 k\$
- Council's cash-on-hand < 1.0 Yearly Budget

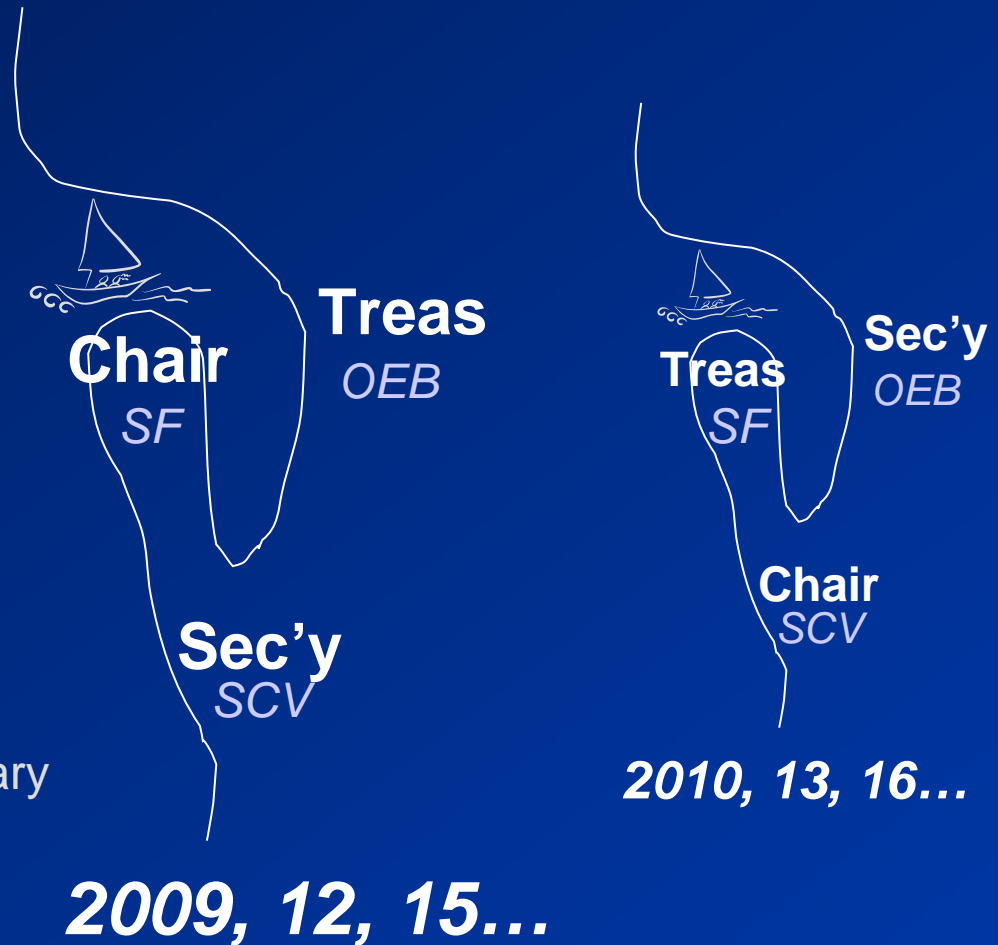
What does (should) a Council do?

- Provide a vehicle for services aided by section interaction
 - When “more is merrier”
 - When the “extra mile” is worth it
 - Like this Officer Training Event
- Coordinate communications
 - The Online Grid
 - Enhance Region ties
- Tri-section Events
 - Officer Training; sharing of Best Practices
 - PACE activities, consultants network
 - affinity groups: WiE, GOLD !
- Provide shared resources
 - in the past, an office & secretary
 - Now, ideas and volunteers




The 2009 SFBAC ExCom

- Consists of Section Chairs or their appointees
- Oakland/East Bay
 - Rosanna Lerma, Treasurer
 - Bill DeHope, appointee
- San Francisco
 - Mike Butler, Chair
 - Dan Sparks, appointee
- Santa Clara
 - Roxsana Hadizadeh, Secretary
 - Ram Sivaraman, alternate
- Officer rotations are common in IEEE



The right-hand rule of SFBAC positions

Summary

- IEEE is a unique, highly-beneficial organization
- Active local chapters are the lifeblood  of IEEE
- Get involved in your Section; you can help each other
- Know about your Council
 - The Council is the geographic entity *above* Sections, but below Areas and Regions
 - The Council is *below* Sections in terms of control and finances
 - Your Council exists to help, not lord over, the Sections
- The Council coordinates tri-section activities, like this!



Questions/Notes: