

# Individual Benefits and Services Committee Report

**Hidenori NAKAZATO**

Region 10 Representative to Individual Benefits and Services Committee 2009 – 2010

[27-28/02/2010] Lapu-Lapu, Cebu, Philippines  
/ R10 Meeting

# IB&SC Activities in 2009

- 2 Meetings (March and September)
- 3 Webinar (June, August, December)

# New Benefits for R10

- Dell Discount Program is now available in Australia, China, India, Japan, and New Zealand
- Regional Student Design Competition funding is available from IB&SC/FAP
- Discount program for a file backup service Mozy.com will be available soon.
- National/Alamo Car Rental discount program is available worldwide
- Risk Management Course developed by IB&SC will be available free of charge as a part of a bundle “Stuff you don’t learn in Engineering school”

# Currently Under Consideration

- Tools for sections to develop local benefit programs
- Career management product available worldwide
- Risk management certificate course

# Electronic Communications - Report and Plan -

Hidenori NAKAZATO

Electronic Communication Coordinator 2009 - 2010

[27-28/02/2010] Lapu-Lapu, Cebu, Philippines  
/ R10 Meeting

# Email

- Coordinated through the IEEE Asia Pacific Operation Centre. Fanny Su and Ewell Tang played a vital role in the efficient use of email service by forwarding messages and important announcements in a very timely fashion.

# R10 Website

- Website updated
  - Top page includes news and announcements



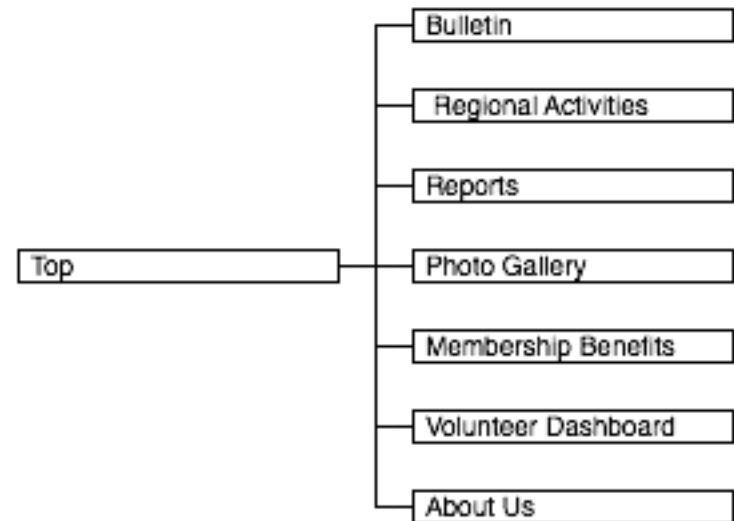
old top page



new top page

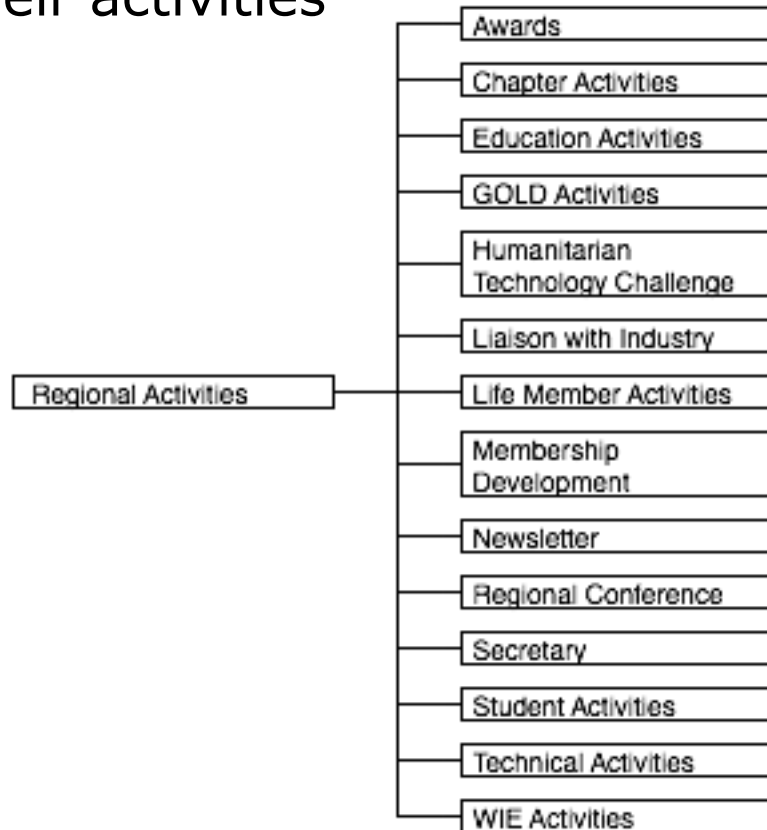
# R10 Website Structure

- Top Layer Structure
  - “Bulletin” tab carries newsletters and announcements
  - “Regional Activities” tab is for R10 Activities.
  - “Reports” carries annual reports and meeting reports
  - “Photo Gallery” is as the name stands
  - “Membership Benefits” is a list of benefits for IEEE members
  - “Volunteer Dashboard” collects tools and information to help volunteers
  - “About Us” tab is for R10 information



# R10 Website Structure

- Separate pages for R10 Activities Coordinators to announce their activities



# Volunteer Dashboard

## ■ Information

- Volunteer Home in IEEE HQ Site
- Quick Fact about IEEE
- Information for New Officers
- Geographic Unit Formation
- Financial Resources for Geographic Units
- Summary of Principles of Business Conduct

## ■ Electronic Tools

- E-notice
- EWH
- SAMIEEE
- V-Tools

# Volunteer Dashboard

## ■ Tools

- Recognition Products

## ■ Reports & Forms

- IEEE Geographic Unit Required Report
  - Meeting Activity Report (L31)
  - Financial Report (L50)
  - Principles of Business Conduct/Conflict of Interest Form
- 2009 Expense Form
- 2010 Expense Form
- IEEE Copyright Form
- Master Brand (Logo) Images
- Presentation Templates
  - IEEE Master Brand Template

# Section Map

- A map is created to show the locations of sections and to link to section web sites

The screenshot displays the IEEE Region 10 website. At the top, the IEEE logo is on the left, and the text 'THE INSTITUTE OF ELECTRICAL AND ELECTRONICS ENGINEERS, INC. REGION 10 THE ASIA PACIFIC REGION' is on the right. A navigation bar contains links for 'Top', 'Bulletin', 'Regional Activities', 'Reports', 'Photos', 'from IEEE HQ', 'Volunteer Dashboard', and 'About Us'. On the left side, a vertical menu lists: 'Director's Message', 'Executive Committee', 'Bylaws', 'Operations Manual', 'Section Map', 'Sections & Councils', 'IEEE Asia Pacific Ops Centre', 'Region 10 FAQ', and 'History'. The main content area features a map titled 'Region 10 Section Map' showing the Asia Pacific region with numerous red location pins. The map includes a scale bar (2000 miles/km) and is powered by Google. At the bottom of the map, it says '地図データ ©2009 Europa Technologies - 利用規約'. The footer of the page includes the number '24802', a search bar, and links for 'Privacy & Security' and 'Terms & Conditions'. A copyright notice for 2009 IEEE is also present.

# Looking Back

Original Plan for 2009	What was done
To be the portal for R10 IEEE members	The site includes "Regional Activities" tag and "Volunteer Dashboard" tag as well as announcements
Clarify the role of Region 10 to novices	The top page includes the mission statement
Making new information stands	The top page includes announcements and new information (Need more timely posting)
Tight links to sections and councils in the region	A section map with links to section websites is created (Need tighter links)

# Plan for 2010

- Search capability (coming soon)
- Timely posting (within 3 days from requests) and notification (including RSS, Twitter, etc.)
- Some mechanisms for tighter interaction among sections, student branches, and EXCOM members (Possibly Wordpress accounts for each participants and Region 10 Theme for Wordpress)

# Accounting

Budget for 2009		Expense
Personnel Expense for student work	JPY 55,000	JPY 45,000

Budget for 2010	
RSS Editor	USD 40.00