



Welcome to Incredible India



**PROPOSAL FOR HOLDING IEEE- R10 MEET -2011
NEW DELHI, INDIA
Feb 26-27, 2011**

**Dr. V. R. SINGH Fellow-IEEE, Chairman, IEEE Delhi Section
vrsingh@ieee.org**

VENUE FOR MEET

- Taj Palace Hotel, New Delhi.
- The hotel has excellent facilities and is very near to Airports (both domestic and international).
- By organising the Meet-2011 in Delhi, delegates can go to Agra to visit Taj Mahal, to visit Jaipur, the pink city and other nearby areas.
- Delhi has tourist attractions and has its own history with monuments like Qutab Minar, India Gate, President's House, Red Fort, Gandhi Samadhi, etc.

Venue Information

- Taj Palace Hotel
Sardar Patel Marg, Diplomatic Enclave
New Delhi 110 021, India
Tel: (91-11) 2611 0202, Fax: (91-11) 2611 0808, 2688 4848
Email: palace.delhi@tajhotels.com

Facilities

- Experience the ultimate in luxury in any of our 422 rooms and 40 suites, including two Grand Presidential Suites.
- Also known as the The Convention Centre of the city and boasting 13 halls including a special preview hall for private screenings to large halls to accommodate seminars for 700 delegates and even a grand reception for 1000 guests. Includes two lush lawns that can accommodate up to 500 guests for a cocktail evening with traditional Indian performances. The Convention centre is well equipped offering simultaneous translation in 5 languages.

DATES OF R10 MEET IN 2011

MAIN MEETING DATES:

FEBRUARY 26, 2011 (Saturday)

FEBRUARY 27, 2011 (Sunday)

TAJ PALACE HOTEL, NEW DELHI (ACCOMMODATION AVAILABILITY):-

Check In	25 th February 2011
Check Out	28 th February 2011
No. of rooms	110

Stay of Organising Staff:

Check In	24 th February 2011
Check Out	25 th February 2011
No. of rooms	10



Venue

TAJ PALACE
New Delhi, India

Current Hotel Rates

TAJ PALACE HOTEL, NEW DELHI :-

Total No. of Rooms Required 110

Rate:

Deluxe Room sgl/dbl = USD 240 (availability upto 60 rooms)

Taj Club Room sgl/dbl = USD 300 (availability upto 45 rooms)

Note: Room rent does not include taxes

The above room rate is inclusive of the following:-

- **Room accommodation on a per room per night basis**
- **Buffet breakfast at the coffee shop**

TAJ PALACE HOTEL ROOMS



FACILITIES

Please Note (for banquet halls):-

- The rates are on a per person per day basis, are non-commissionable and are valid for this event only.
- The above day conference package includes hall rentals as mentioned above
- All beverages (alcoholic and non alcoholic) will be charged as per consumption and has to be bought from the hotel.
- All audio visual equipment taken from the hotel will be charged extra.
- The rates are applicable for a minimum guarantee as mentioned above guests and inclusive of the following :-

The banquet rates include

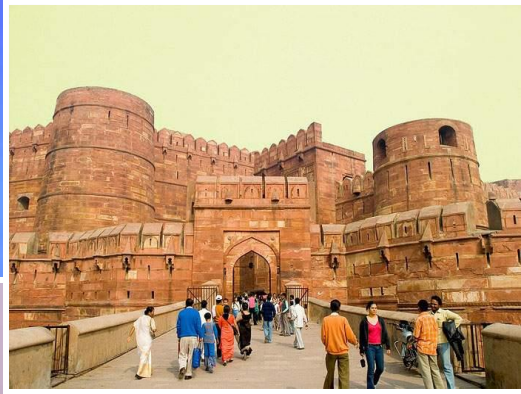
- Usage of the main conference hall
- Basic conference stationery



Conference Rooms @ Hotel Taj Palace



Qutub Minar



Red Fort



Jantar Mantar



India Gate



Bahai Temple

Places to visit in Delhi



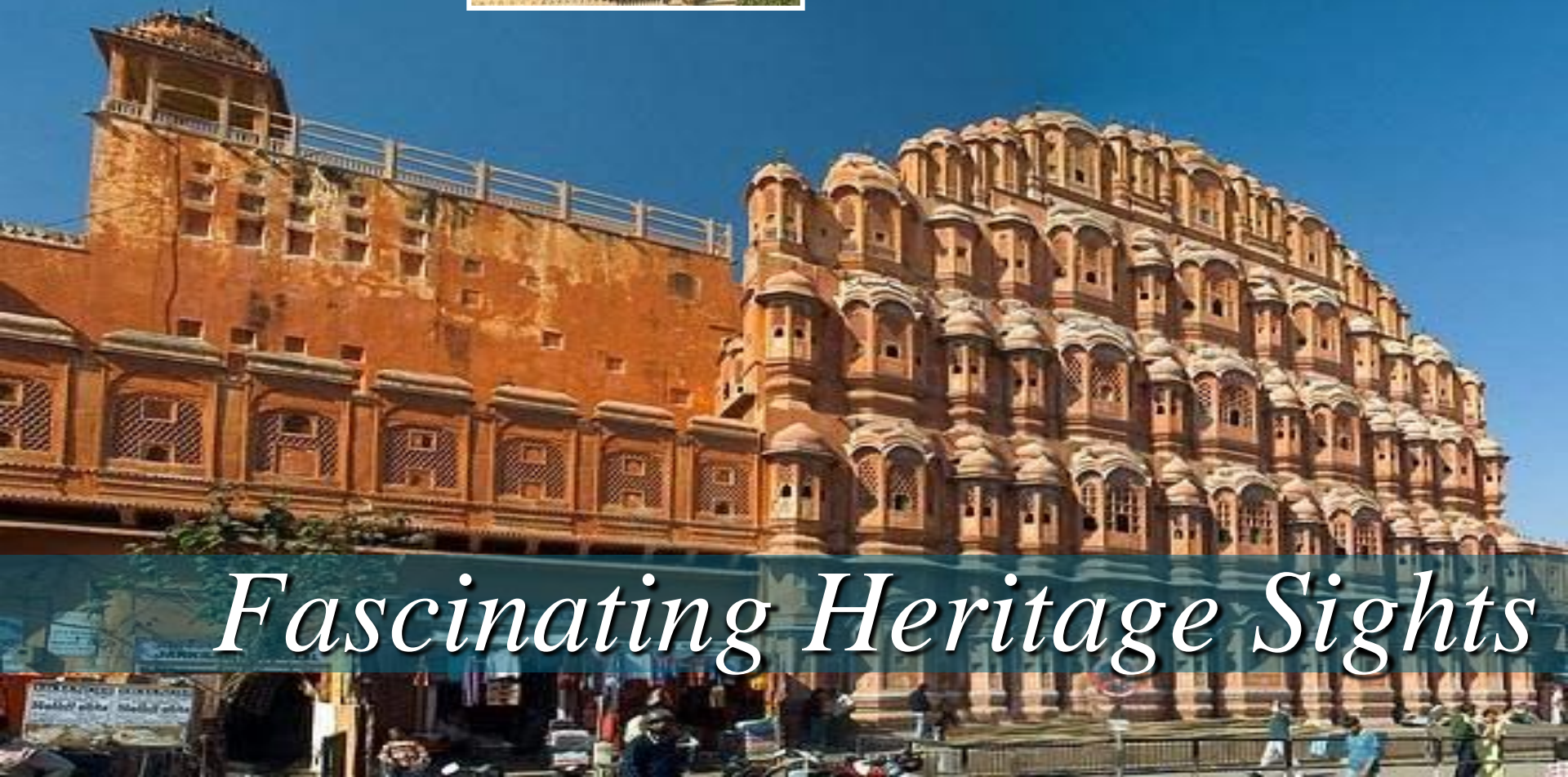
...and royal in history

Places to visit near Delhi

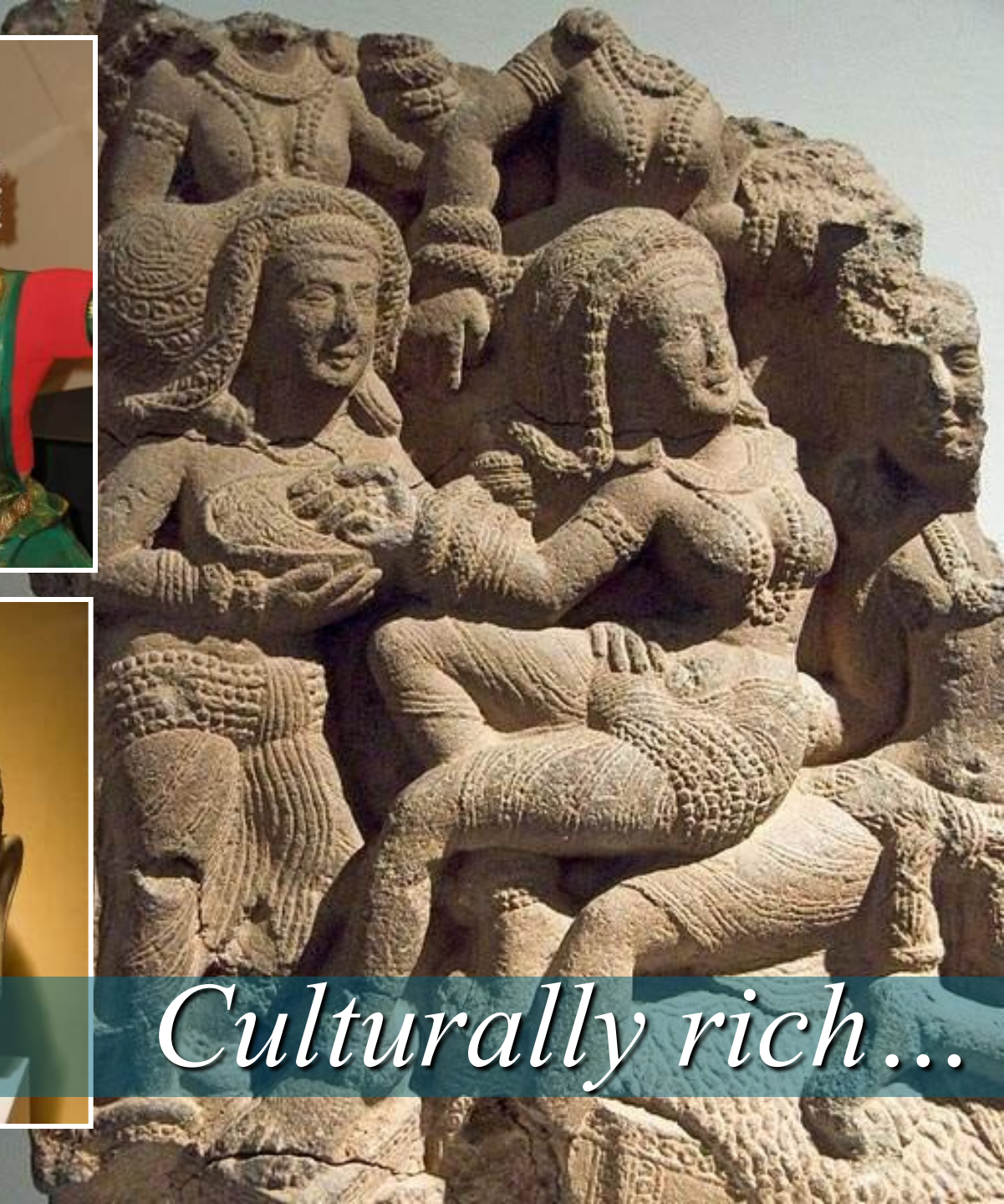
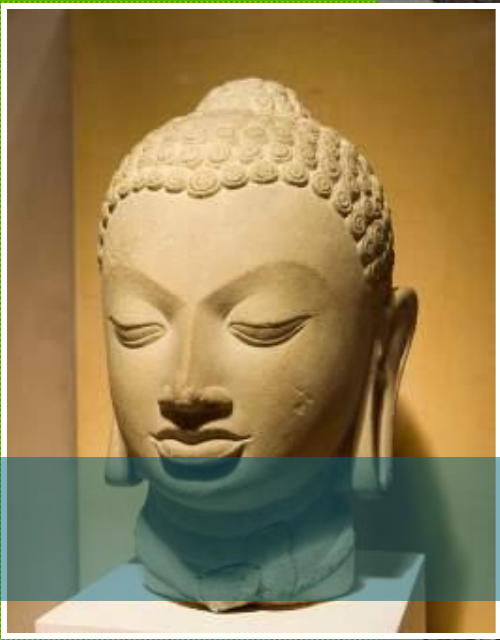
- **Agra**(203km): This city of Taj is about 200km from Delhi. Taj Mahal, Agra Fort, Sikendra, Fatehpur Sikri etc. are places of Interest. **Ballabgarh Lake** (36km): A quiet tourist resort located along the Delhi - Mathura Road, Ballabgarh is an ideal picnicking, holidaying and fishing spot.
- **Corbett National Park** (260km): Located on the foothills of the Himalayas, this National Park is spread over 520sq.km. The wildlife includes tiger, elephant, leopards, mugger-crocodiles etc.
- **Jaipur** (258km): Jaipur, the capital of Rajasthan is popularly known as the pink city. The amber fort, Hawa Mahal etc. are worth visiting.
- **Sarika Tiger Reserves** (240km): The reserve is located on the Aravalli Mountain Range. The wildlife includes tiger, leopard, sambar, wild boar etc. The park also has the ruins of a 9th century Shiva Temple.
- **Bharatpur Bird Sanctuary** (215): Located along the Agra - Jaipur Road, this National Park has an annual migrant bird population of more than 500,000 birds. This is one of the two nesting centers of the Siberian Cranes.
- **Sohna** (56km): The hot sulfur springs located near the Sohna fort are supposed to have medicinal values. The tourist complex at sohna has good board and lodge facilities.
- **Sultanpur bird Sanctuary** (46km): This sanctuary near Gurgaon has a large lake. A large number of migratory birds from Europe, Siberia and Central Asia including Saurus Cranes and Flamingos visit the sanctuary during the winter months.
- **Surajkund** (17km): This is a picnic spot near Delhi. Boating and fishing in the lake are added attractions. Surajkund has an excellent 18-hole golf course.



Breath taking monuments



Fascinating Heritage Sights



Culturally rich...

*...to mouth watering
Indian Delicacies*





**See you at IEEE-R10 Meet 2011 in
Delhi!**