



# Building Technical Communities: TAB's Priority and MGA Cooperation

Rob Reilly, IEEE Division VI Director

12 April 2015, Ft. Lauderdale, FL, USA, Earth, Milky Way

# Who am I?

- ▶ **Doctor of Education**
- ▶ **Board of Governors**
  - IEEE Education Society (since 2003)
  - IEEE Computer Society (since 2014)
- ▶ **Past IEEE Berkshire Section Chair**
- ▶ **Past Executive Committee IEEE Boston Section**
- ▶ **Region 1 Executive Committee**
- ▶ **Blah... blah... blah... MGA... TAB... EAB...**

# Who am I?

## ▶ **IEEE Board of Directors**

### – **Director, Division VI**

1. Education Society (not the EAB)
2. Industrial Electronics Society
3. Professional Communications Society
4. Product Safety Engineering Society
5. Reliability Society
6. Society for Social Implications of Technology
7. Technology & Engineering Management Society

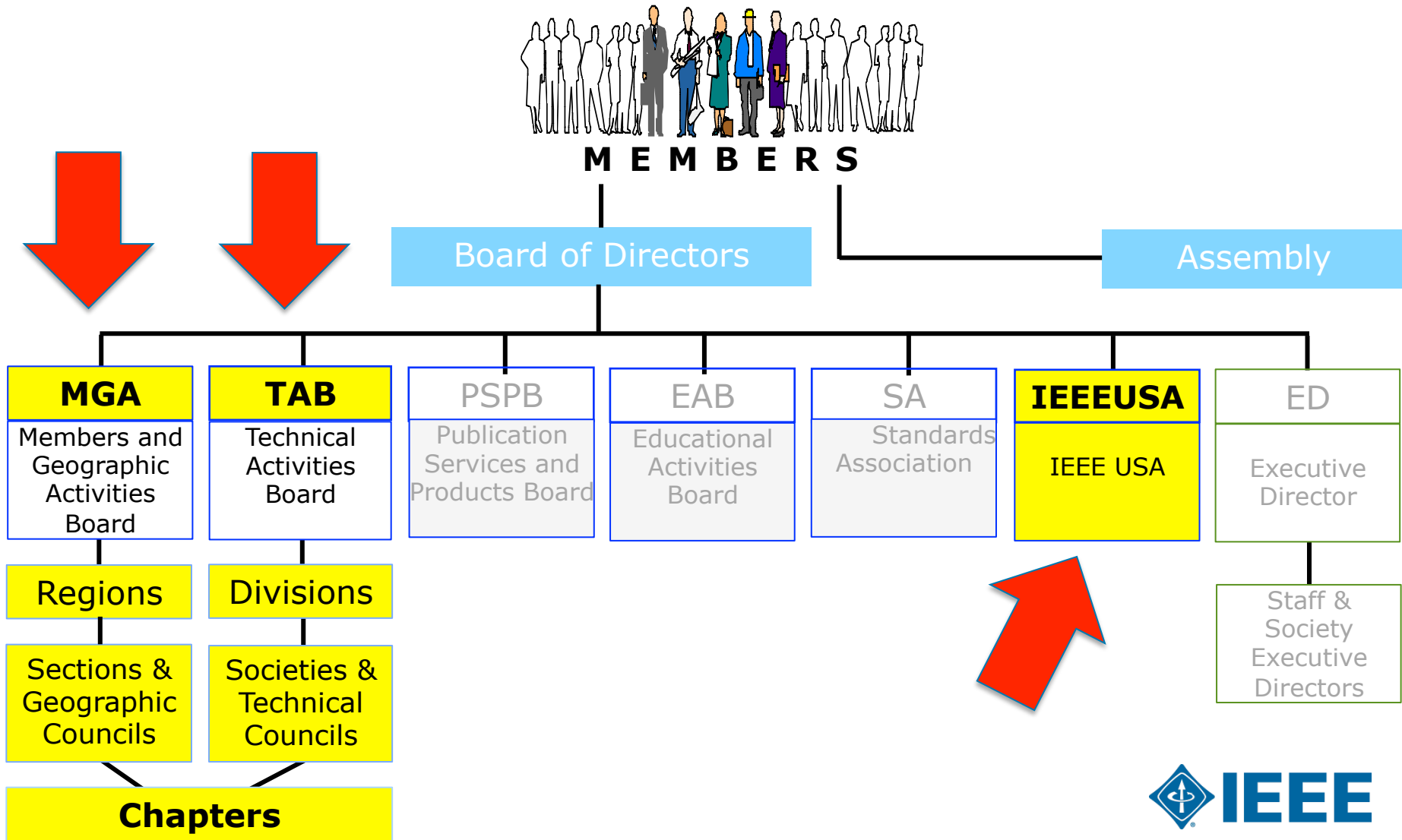
## ▶ **Still happily married**

# Who is IEEE Technical Activities?

# Who is IEEE Technical Activities?

- ▶ 318,397 Society memberships as of January 2015
- ▶ 39 Societies
- ▶ 6 Councils
- ▶ Technical Communities
- ▶ Technical Activities Board (TAB)
- ▶ TAB Committees
- ▶ TA Staff

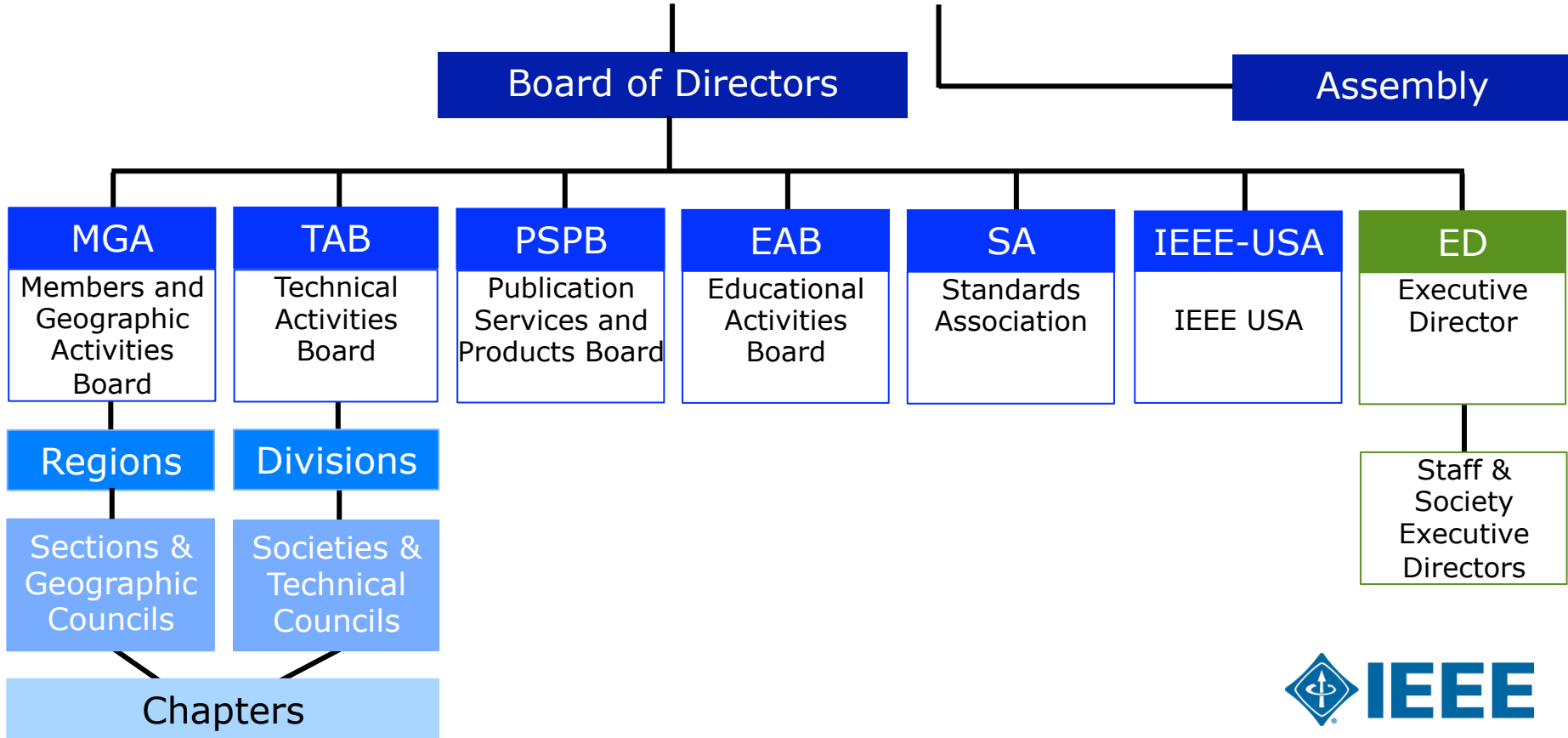
# IEEE Organization



# IEEE Organization



**M E M B E R S**





# IEEE TAB Mission

***Inspire, Foster and Empower  
Technology-Centric  
Worldwide Communities***

(approved June 2013)



# IEEE TAB Vision

- ▶ IEEE Technical Activities worldwide communities:
  - Develop a volunteer-led environment where technical thought leaders converge and create communities for people working in our fields
  - Solicit, refine and disseminate quality technical information
  - Organize technical gatherings to foster innovation and interchange
  - Nurture and promote innovative technical ideas and new technical fields

# The Goal...

Be essential to the global technical community and to technical professionals everywhere,

and be universally recognized for the contributions of technology and of technical professionals in improving global conditions

**How do we accomplish  
these goals?**

# TAB Priorities



- ▶ Expand to new audiences
- ▶ Invest in emerging technologies
- ▶ Deliver new types of products
- ▶ Use new tools and delivery mechanisms
- ▶ Address financial transparency and reporting

**understanding  
revenue streams**



## ***Nurturing Technology-Centric Communities Worldwide with Local Roots***

### ***Global Inclusiveness***

*Diversity is an IEEE strength:*

*Technological interests, Cultural background, Geographical diversity,  
Employment, Gender diversity, Age*

### ***Cooperation in TAB and with other Major Boards***

# 2015 TAB Priorities



- ▶ nurture technical communities
- ▶ technical activities worldwide and local
- ▶ future technology directions
- ▶ continuing education and technical career resources
- ▶ globalized inclusive perspective
- ▶ communications
- ▶ humanitarian projects and public imperative
- ▶ public visibility and global offices

# 2015 TAB Priorities



## ▶ ... **Promote cooperation in IEEE**

- cooperation within TAB
- cooperation w/MGA & among Major Boards
- transfer IEEE Board of Directors strategies into
  - TA strategies and operations
  - Society/Council projects
- be more effective in contributing to shape IEEE strategies
- TA Board initiatives and cooperation with Major Boards



# 2015 TAB Priorities



## › ... **Improve TAB operations**

- alignment within IEEE
- financial transparency

**deep understanding  
of revenue streams**

# 2015 TAB Strategic Goals

- ▶ Technical Community Building
- ▶ Emerging Technological Needs
- ▶ Continuing Education & Career Resources
- ▶ Entrepreneurs, Young Professionals, and Professional Engineers

# 2015 TAB Operational Goals

- ▶ TAB Operation Simplification
- ▶ Supporting Technology-centric Communities Management
- ▶ Cooperation across IEEE
- ▶ Expanded Transnational Scorecard
- ▶ Technical Activities Volunteer Training Workshops

# TAB-MGA Cooperation

- ▶ Energize joint cooperation in Chapters
  - Technical meetings, educational activities, ...
- ▶ Nurture underserved segments of the technical communities
  - Young professionals
  - Professional engineers in industry
  - Women
- ▶ Identify local emerging needs for technologies and applications

**Next not TAB policy...**

**just my words of  
wisdom...**

**Big take-away...**

**revenue stream vs. budget**

**MGA & TAB have different  
functions in this process  
known as IEEE (not just \$\$\$)**

# Section Chair...



# 3 Types of Societies....:

- ▶ Hard science – vertical
- ▶ Hard science – horizontal
- ▶ Professional skills - horizontal

*Vertical* – domain knowledge is almost self-contained

*Horizontal* – domain knowledge interesting across IEEE



# 3 Types of Societies...:

- ▶ **IEEE Board of Directors**
  - **Director Division VI**

1. Education

## **2. Industrial Electronics**

3. Professional Communications
4. Product Safety Engineering
5. Reliability
6. Social Implications of Society
7. Technology & Engineering Management

*hard science - vertical*

# 3 Types of Societies...:

## ▶ IEEE Board of Directors

### - Director Division VI

1. Education
2. Industrial Electronics
3. Professional Communications

*hard science - horizontal*

## **4. Product Safety Engineering**

## **5. Reliability**

6. Social Implications of Society
7. Technology & Engineering Management

# 3 Types of Societies...:

- ▶ **IEEE Board of Directors**
  - **Director Division VI**

## **1. Education**

2. Industrial Electronics

## **3. Professional Communications**

4. Product Safety Engineering

5. Reliability

## **6. Social Implications of Tech**

## **7. Tech & Engr Management**

*professional skills - horizontal*

# 3 Types of Societies...:

- ▶ Hard science – vertical
- ▶ Hard science – horizontal
- ▶ Professional skills - horizontal

*Merge several and you have a top quality conference*

# The buffet... don't overeat

Find a champion...

Draw a fence around the task...

Create affinity groups – entrepreneurial,  
start-up

# The buffet... don't overeat

- ▶ **Distinguished Lecturer Program**
  - (IEEE-wide list) CS funds DLP
- ▶ **CS's Merwin Scholarship Program**
- ▶ **How to be a new employee**
- ▶ **What's ahead for me**
- ▶ **Establish Student Branches**
  - Meaningful activity... students vs student members
  - Support student competition (student papers, robotics)

# The buffet... don't overeat

- ▶ **Technical meetings**
  - 2012 IEEE MGA Member Segmentation Survey
- ▶ **Learn the power of SAMIEEE**
  - more features than you might think

# The buffet... don't overeat

- ▶ **Fellow/Senior Member/Member**
  - Member → SM → Fellow
- ▶ **Science Writing Program for grades 10-12**
  - IEEE Berkshire Section Web site
- ▶ **Student competitions**
  - Robotics, Ethics, selected topic
  - No/low cost



# The buffet... don't overeat

- ▶ **Section/Chapter awards**
  - young engineer, distinguished member, best chapter, best chapter leader, outstanding student, local company/person, K-12 teacher, science writing
- ▶ **Annual Section picnic**
- ▶ **Bowling League** → socializing
- ▶ **Section mtg w/chapter leaders - networking**

# The buffet... don't overeat

- EPICS
- IEEE/IBM Watson Student Showcase
- IEEE Academic [academic.ieee.org/join](http://academic.ieee.org/join)
- PACE
- IEEE Foundation

**revenue stream vs. budget**

# Closing thought...

MGA and TAB have different functions in this process known as IEEE. We can accomplish great things by:

**providing a ferry service among our islands of excellence**

# Questions?



Thank you...

Rob Reilly  
rreilly@mit.edu