

Section – Student Branch Interaction



Context: Why this discussion

Region SAC representatives have noted that Student Branches are becoming increasingly disconnected from IEEE. Over time, our ability to communicate effectively with our Student Branches has diminished.

- ▶ MGA – Student Branch Connection.
 - Collection of Student Branch officer contact info is currently tied to the Student Branch rebate which is utilized by only a small portion of Branches.
- ▶ Section – Student Branch Connection
 - Until recently, there was only a loose organizational linkage between Sections and Student Branches.

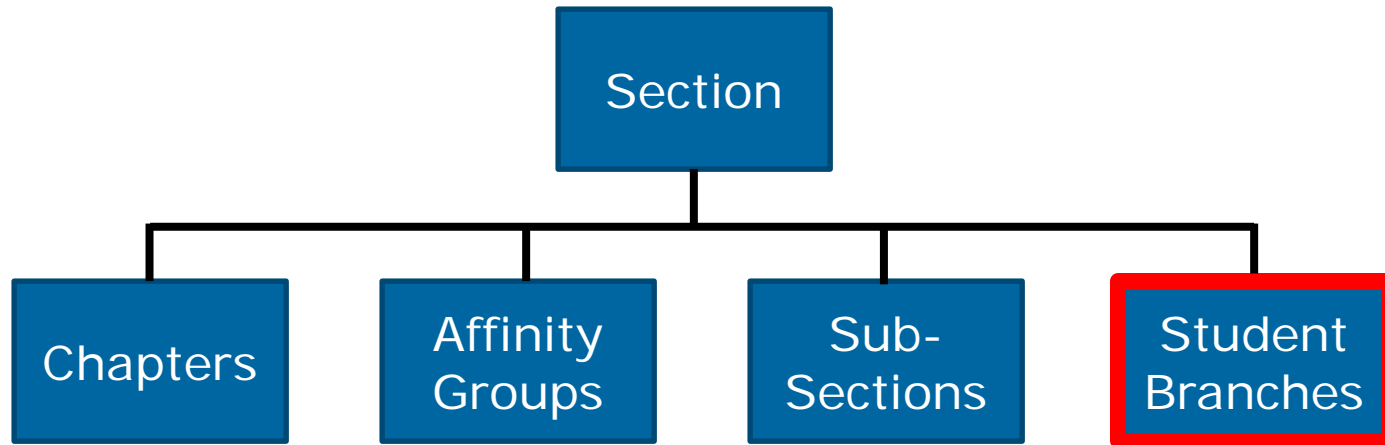
Proposed Direction: What needs to Change

- ▶ The fundamental connection of Student Branches to IEEE should occur at the local level ... the local Section.
- ▶ The Section – Student Branch connection should be a clear directive from IEEE with an explicit organizational bond (parent-child).
- ▶ Sections should be the primary authority in approving the formation of new student branches and the dissolution of student branches that cannot be rejuvenated.

Proposed Direction: What needs to Change

- ▶ Student Branches should report their meetings (online) to their parent Section in a simple, timely fashion (like chapters and affinity groups). The end-of-the year student branch annual report should be replaced with a beginning-of-the-year annual plan (simple, online, includes current officer contact info).
- ▶ Sections should receive a rebate incentive when the section – student branch connection is demonstrated.

New Section Organization Model

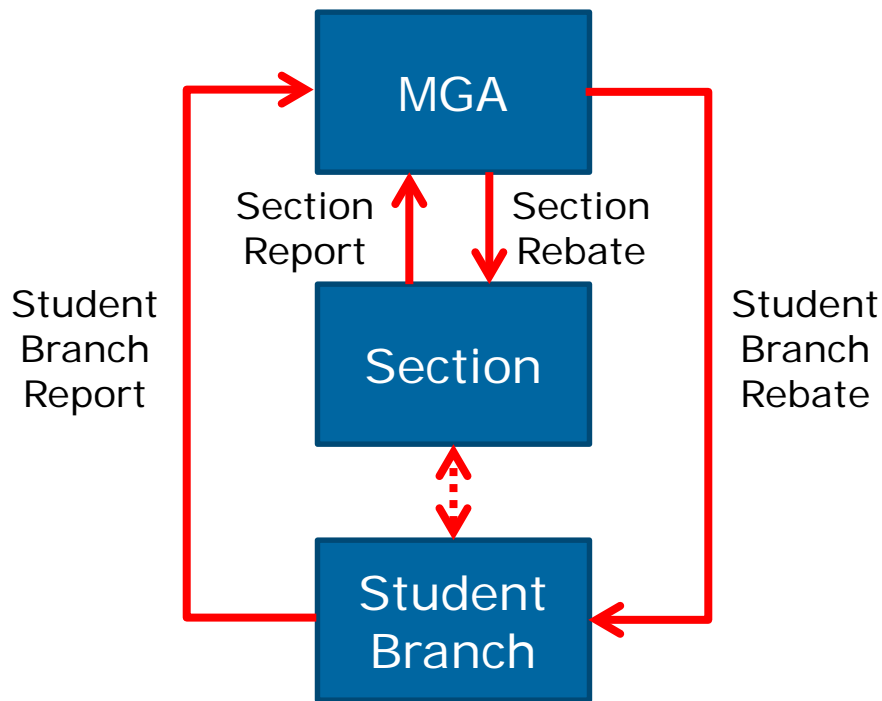


Section EXCOM

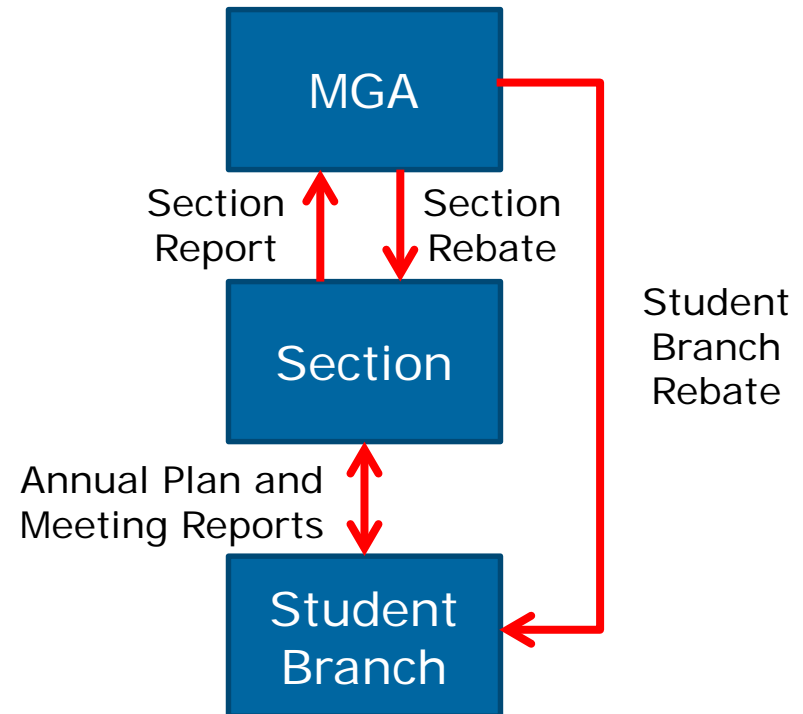
- Chair
- Vice-Chair
- Secretary
- Treasurer
- Chapter Chairs
- Affinity Group Chairs
- Subsection Chairs
- Section Student Activities Chair (SSAC)
- Section Student Representative (SSR)

Importance of the Section – Student Branch Connection

Current Reporting Model



New Reporting Model



How will IEEE be different?

Today	Tomorrow
The Section - Student Branch connection is implicit (encouraged).	The Section – Student Branch connection is explicit (expected).
A large amount of Student Branch activities are not collected by IEEE.	Student Branch activities are reported in a timely fashion and Section awareness of Student Branch activities is improved.
Contact data for Student Branches is incomplete and outdated.	Contact data for Student Branches is kept current ... gathered locally by the Section.
Student members may or may not be exposed to the broad spectrum of IEEE.	Effective Section – Student Branch interaction gives students a clear picture of IEEE as a whole.
The level of Section – Student Branch interaction varies widely across IEEE.	Effective Section – Student Branch interaction becomes the norm across IEEE.