

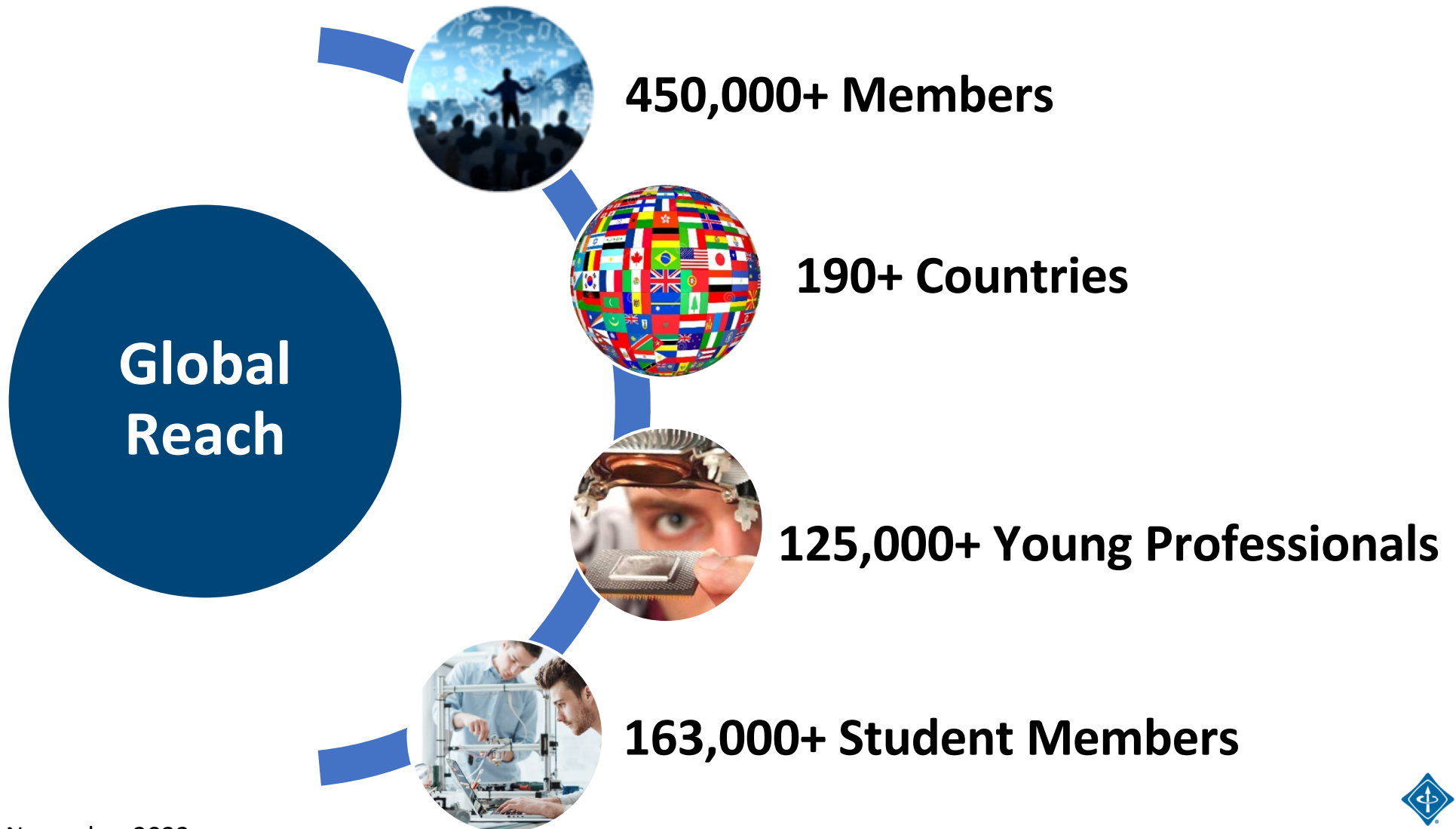


# IEEE students

## IEEE Students Overview



# IEEE in 2023 at a glance



# IEEE in 2023 at a glance



# IEEE in 2023 at a glance



## Spotlight on Region 3: Top 10 Sections – Total IEEE Membership

Rank	Section Name	February 2024	February 2023	Year-over-Year % Change
1	Atlanta Section	2,805	2,741	2.3%
2	Eastern North Carolina Sec.	2,156	2,091	3.1%
3	Florida West Coast Section	1,556	1,505	3.4%
4	Orlando Section	1,017	918	10.8%
5	East Tennessee Section	860	852	0.9%
6	Huntsville Section	686	669	2.5%
7	Central Tennessee Section	683	656	4.1%
8	Alabama Section	631	625	1.0%
9	Richmond Section	628	629	-0.2%
10	Charlotte Section	584	563	3.7%



## Spotlight on Region 3: Top 10 Sections – Total Student Membership

Rank	Section Name	February 2024	February 2023	Year-over-Year % Change
1	Atlanta Section	419	370	13.2%
2	Eastern North Carolina Sec.	236	217	8.8%
3	Florida West Coast Section	217	180	20.6%
4	Orlando Section	210	127	65.4%
5	Central Tennessee Section	157	121	29.8%
6	Virginia Mountain Section	145	165	-12.1%
7	Gainesville Section	110	97	13.4%
8	Alabama Section	105	90	16.7%
9	Piedmont Section	100	72	38.9%
10	East Tennessee Section	97	95	2.1%

# Region 3 Student Branch Reporting

Year	# Student Branches	Annual Plan		4+ Events Reported		Chair Reported		Qualified for Rebate	
		#	%	#	%	#	%	#	%
2023	114	32	28%	18	16%	31	27%	15	13%
2024	102	44	42%	35	34%	73	70%	32	31%

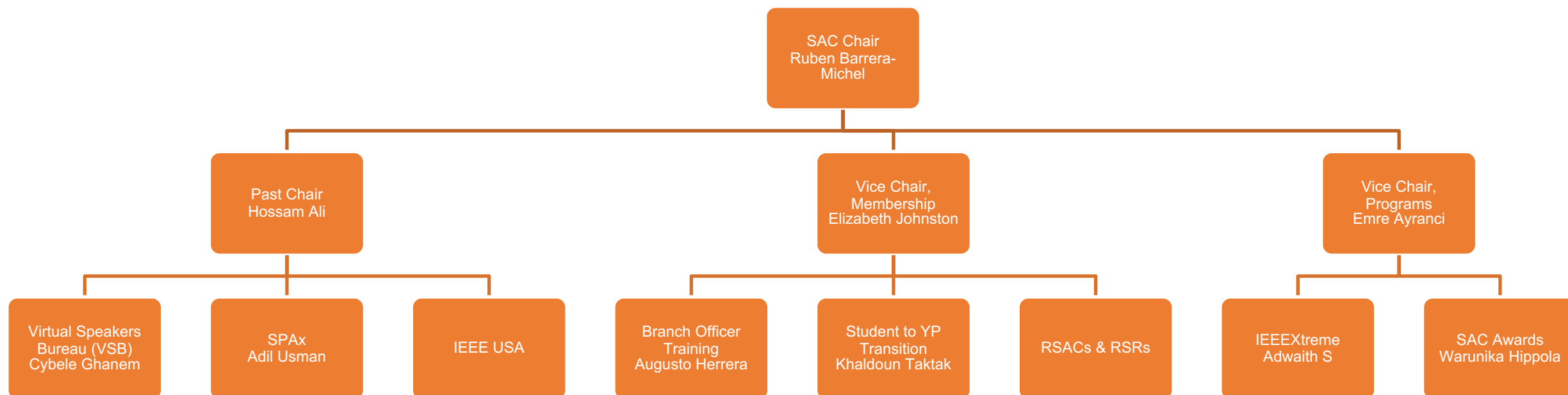
**We are not a social club in the University**

Note: Several Student Branches were deactivated due to inactivity in 2023 which affects this data  
Data as of 29 February 2024



## What is the Student Activities Committee

**Mission:** To deliver a common, high quality IEEE Student member experience globally, for lifelong, professional success through IEEE membership:





## Membership dues

- Currently, studies are being conducted on different membership payment methods, whether by number of years, 1, 3, 5 for students and Young Professionals. The results will be available in the incoming weeks.
- MGA Approved the use of CB Accounts for Student Branches, Section should approve and will be the parent unit.



# Who Are IEEE Students?

IEEE  
students



- IEEE Members who are carrying at least 50% of a normal full-time academic program as a registered undergraduate or graduate student in a regular course of study in IEEE designated fields
- 163,000+ IEEE Student Members
- 3600+ Student Branches
  - Made up of Student and Graduate Student Members associated with a university or school
  - IEEE Member faculty at School serve as counselors
  - Funded in part by rebates and membership dues



# Student Members tell us what's important to them\*

IEEE  
students

- Developing leadership skills
- Creating effective Resumes / CV's
- Building a professional network locally and globally
- Connecting with other students who have shared interests
- Mentoring opportunities
- Exposure to different technical fields through IEEE Societies
- Relationships with higher grade members via IEEE Sections



# Valuable Resources available to IEEE Students

IEEE  
students

## Virtual Speakers Bureau (VSB)

- Established in 2020, the Virtual Speakers Bureau (VSB) pairs Branches with volunteer speakers
- Student Branches can choose from over 500 topics
- Presentations are available in 17 languages
- Special Events are live streamed via IEEE.tv



## SAC Training Series - Piloted 2023

- Training presented by volunteers on a variety of topics geared towards Students
- Variety of topics including Student Branch Counselor, Officer Training, Branding & Student Swag, Engaging Industry
- Videos available on IEEE.tv Students Channel and Student Branch Collabratec Workspace

## Student Professional Awareness (SPAx)

- Provides funding for IEEE Student Branches to plan career-focused events
- Funds can be used to pay for food, venues, speakers, etc.



# Are You Reading Potentials Magazine?

IEEE  
students

Potentials is the only IEEE magazine for undergraduate and graduate student members that address global issues, career development, and other topics, emphasizing the value of continuing IEEE membership after graduation.

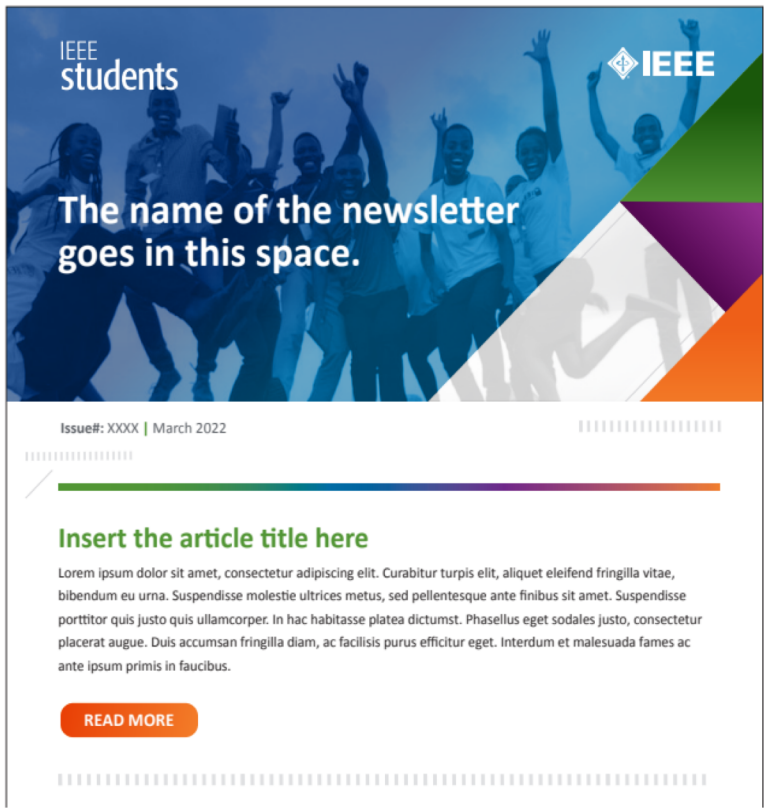


- Students have the opportunity to author and publish articles
- Editorial Team includes a Student Member
- Relates theories to practical applications
- Generates international forums
- Shares diverse ideas about engineering professions

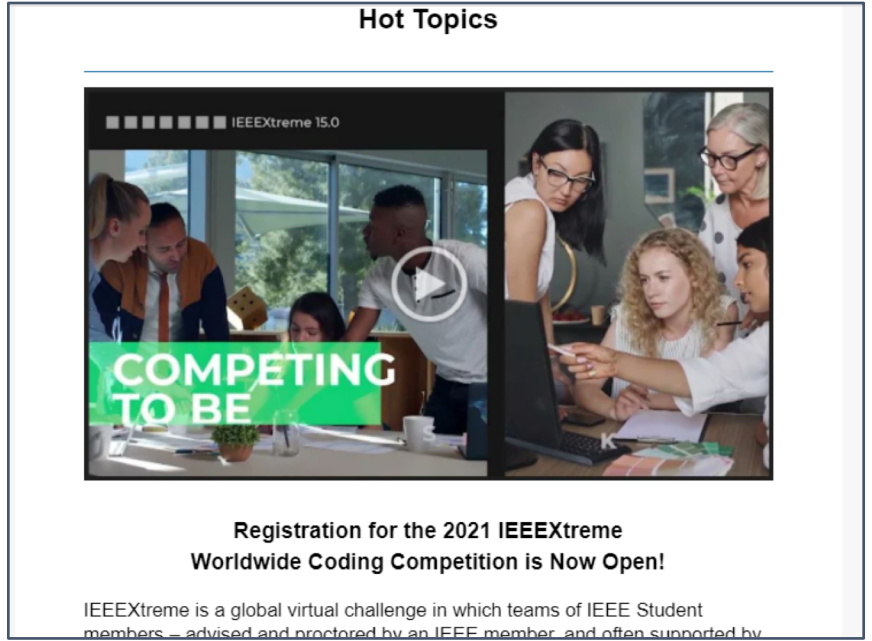


# IEEE Student Branch Leadership Newsletter

This publication keeps Student Branch Leadership informed of what they need to run their organizations



Circulation 2022: 7,000+



Students Quarterly Newsletter



# Student Awards & Recognition

IEEE  
students

- **Larry K. Wilson Regional Student Activities Award**  
Most extraordinary accomplishment associated with Student Activities
- **IEEE Regional Exemplary Student Branch Award**  
Exemplary IEEE Student Branch operations
- **The Darrel Chong Student Activity Award**  
Host the most value-driven student activities around the world
- **Outstanding Branch Counselor and Branch Chapter Advisor Award**  
Cash award to each of the approximately 20 outstanding Counselors and Advisors at Student Branches and Chapters around the world



# Engaging students with the IEEEXtreme coding competition

IEEE  
students

**IEEEXtreme is a global challenge in which teams of 1-3 IEEE Student members compete in a 24-hour time span to solve sets of programming problems**

- Started in 2006
- 2023 IEEEXtreme 17.0 by the numbers:
  - 16,500+ Students
  - 7,000+ Teams
  - 1,700+ Ambassadors
  - 750+ Student Branches
  - 2,300+ Proctors
- Look out for information on IEEEXtreme 18.0 in 2024!





# Benefits of Connecting with Student Branch Chapters and Sections

- Facilitates the exchange of knowledge, resources, and opportunities among students, professionals, and academic institutions.
- Maintaining strong ties with Student Branches, student chapters can access guidance, mentorship, and organizational support essential for their growth and success.
- Being linked to Sections enables student chapters to tap into a broader professional community, enhancing collaboration, networking, and exposure to industry trends and practices. Ultimately,
- This structure empowers student members to thrive academically, professionally, and personally, laying a solid foundation for their future endeavors in the field of electrical and electronics engineering.



## An IEEE Professional Section can support Student Activities and Student Branches in several ways:

1. **Mentorship and Guidance:** Professional members within the IEEE Professional Section can serve as mentors for students, offering guidance on academic and career-related matters. They can share their experiences, provide advice, and help students navigate their academic and professional journeys.
2. **Technical Talks and Workshops:** Professional Sections can organize technical talks, workshops, and seminars on various topics relevant to students' fields of study and interests. These events can provide students with opportunities to learn from industry experts, explore new technologies, and expand their knowledge beyond the classroom.
3. **Networking Events:** Professional Sections can host networking events where students can interact with professionals in their field, build connections, and explore potential internship or job opportunities. These events facilitate collaboration and knowledge exchange between students and professionals.
4. **Financial Support:** Professional Sections can provide financial support to Student Branches for organizing events, competitions, conferences, and other activities. This support can help alleviate the financial burden on students and enable them to execute impactful initiatives.

## An IEEE Professional Section can support Student Activities and Student Branches in several ways:

**5. \*\*Collaborative Projects:\*\*** Professional Sections and Student Branches can collaborate on projects, research initiatives, or community service activities. This collaboration fosters teamwork, encourages innovation, and allows students to gain practical experience while working alongside experienced professionals.

**6. \*\*Access to Resources:\*\*** Professional Sections can grant students access to resources such as technical publications, journals, and online libraries. This access enables students to stay updated on the latest developments in their field and enhances their academic and research endeavors.

**7. \*\*Recognition and Awards:\*\*** Professional Sections can recognize outstanding student achievements through awards, scholarships, or certificates. This recognition motivates students to excel in their academic pursuits and encourages active participation in IEEE activities.

Overall, the support and collaboration between IEEE Professional Sections and Student Branches create a conducive environment for learning, professional development, and personal growth among students pursuing careers in engineering and related fields



## Uniting the IEEE Global Technical Community

# What is IEEE Collabratec?



- ▶ IEEE Collabratec is a global community of technology professionals, centered around conversations that are meaningful and productive. With Collabratec, you have support, inspiration, feedback, and a network you can rely on.

A circular graphic with a woman's portrait in the center. The graphic is surrounded by concentric circles and includes a location pin for 'Singapore' and a star icon for 'Artificial Intelligence'. Below the graphic, the text reads: 'Advancing My Career' and 'It's helping me build the knowledge I need in order to advance in my career.'

A circular graphic with a man's portrait in the center. The graphic is surrounded by concentric circles and includes a location pin for 'Taiwan' and a star icon for 'LED Lamps'. Below the graphic, the text reads: 'Networking with People All Over the World' and 'I've been able to network with people all over the world.'

A circular graphic with a woman's portrait in the center. The graphic is surrounded by concentric circles and includes a star icon for 'Materials Processing' and a location pin for 'Brazil'. Below the graphic, the text reads: 'Sharing Insights Inspires Me' and 'Being able to share insights with others like me is very inspiring.'

**VIEW VIDEO:** <https://youtu.be/Jy1vrlTil3o>

# Find your community on IEEE Collabratec

The screenshot shows the IEEE Collabratec user interface for a member named John Member. The top navigation bar includes links for Discover, Connect, Collaborate, Settings, and Help, along with a search bar and user account information (JOHN MEMBER | Sign Out | IEEE). The main content area is divided into several sections:

- Profile:** John Member, Senior Electrical Engineer (I added via tagline), IEEE Membership Milestone Years (34), IEEE Membership Number 00930628. Links include Membership Card and Certificates, IEEE Membership Directory, My IEEE Section Hub, All IEEE Section Hubs, IEEE Mentors, Career Services, Membership Forum, and Membership Support.
- Home Activity Feed:** A post titled "Exploring Sydney's Deep Tech Ecosystem" (20 hours ago) with an image of a modern building complex. The post includes a sponsored article snippet and interaction options (Like, Comment, Share).
- Pending Actions:** A list of 46 pending actions, including requests from Jorge Senior Member to become an IEEE Mentor and an invitation from William Member to join a Bulk Folder Test.
- Opportunities and Custom Networks:** Sections for finding opportunities and joining custom networks.
- My Badges:** A section showing the user's earned badges.
- Trending Posts:** A section featuring trending posts, including a poll titled "0 Summer is Here" and a post titled "0 000000 Ask to join check community- Edit11-3".

- collabratec network at **330,000+**
- Newly upgraded interface in **2023**
- Visit your or any IEEE Section Hub worldwide
- **Volunteer certificate available to download in a few months**



# Archival Workspaces for Records Retention

- ▶ A new type of workspace on Collabratec, providing a secure location to store files, with automated retention time-periods.
- ▶ Designed to assist volunteers, IEEE Organizational Units (sections, chapters, etc) and staff with IEEE's Record Retention policy.
- ▶ Volunteers can create or join archival workspaces for their organizational units.
- ▶ Provisioned with a special restricted access folder only accessible by OU's Chair, Vice Chair, Secretary, and Treasurer.



- ▶ OU access is granted and removed automatically based on officer reporting

The screenshot shows the IEEE Collabratec workspace interface. The top navigation bar includes 'People', 'Communities', 'Workspaces', 'More', 'Dashboard', 'Notifications', 'Messages', and 'Settings'. The main header displays the workspace name 'IEEE-SA Working Group Officers - files archive' and indicates '2 PARTICIPANTS'. Below the header, there are tabs for 'Activities', 'Files', and 'Participants'. The 'Files' tab is active, showing a file directory on the left and a table of files in the center. The file table has columns for 'Name', 'Date', and 'Created By'. A single file is listed: 'allItems.xlsx' with a date of 'Jan 18, 2022' and created by 'William Senior...'. The right sidebar contains a copyright notice for IEEE and the IEEE logo.

Name	Date	Created By
allItems.xlsx Expires: 2018-03-02 - 11:27:07	Jan 18, 2022	William Senior ...

# Collabratec provides Members value not available elsewhere

Capabilities / Services	Social Networks	Collabratec
Networking and collaboration tools	<input checked="" type="radio"/>	<input checked="" type="radio"/>
Individual / group messaging tools	<input checked="" type="radio"/>	<input checked="" type="radio"/>
Mobile optimized	<input checked="" type="radio"/>	<input checked="" type="radio"/>
Verified Member identity & directories of IEEE Members, Volunteers	<input type="radio"/>	<input checked="" type="radio"/>
Certificates of IEEE and Society membership	<input type="radio"/>	<input checked="" type="radio"/>
IEEE Section and Student Branch hubs	<input type="radio"/>	<input checked="" type="radio"/>
Personalized recommendations of IEEE offerings	<input type="radio"/>	<input checked="" type="radio"/>
IEEE data warehouse integration / IEEE-aligned analytics	<input type="radio"/>	<input checked="" type="radio"/>
Demonstrated impact on non-Member conversions, additive retention	<input type="radio"/>	<input checked="" type="radio"/>





# Collabratec delivers exclusive value to IEEE and Society Members as part of your membership



- **Verified identity** of IEEE and Society Members, Volunteers
- **Distinct recognition** badging for member grades, volunteer and mentor status
- **Personalized certificates** of IEEE and Society memberships
- **IEEE & Society Membership Directories**
- **Mentor / Mentee matching**
- **Virtual IEEE Section, Student Branch hubs**
- **Members Forum** community
- **Automated profile updating** for IEEE affiliations and volunteering
- **IEEE Contact Center chat**



# Opportunities

## Leadership Transitions



- SB Officer (Chair) ● Gain Experience
- Section SAC Officer (SSRs) ● Develop Skills
- Region SAC Team (webmaster) ● Work with Senior Leadership
- Ambassador Programs (IEEEExtreme) ● Expand Network

**MAKE A CHANGE**

- SB Mentor/Advisor ● Mentorship
- Section YP AG officer ● Upgrade to Senior leadership roles
- Section/Chapter officer ● Expand your Professional Network
- Other Regionals/MGA volunteer roles ● Enhance your profile

**MAKE A CHANGE**

# Staff Support

## **Phyllis Caputo**

Senior Manager, Membership Programs

[p.caputo@ieee.org](mailto:p.caputo@ieee.org)

## **Katelyn Serpe**

Senior Program Specialist, Student Activities

[k.serpe@ieee.org](mailto:k.serpe@ieee.org)

## **Robert Sacks**

Program Specialist, Student Activities

[r.sacks@ieee.org](mailto:r.sacks@ieee.org)

## **Contact:**

[student-services@ieee.org](mailto:student-services@ieee.org)

## **Ruben Barrera-Michel**

Chair, Student Activities Committee

[rub\\_barrera@ieee.org](mailto:rub_barrera@ieee.org)