

IEEE Canada Annual Student Congress

September 12-14, 2008
Mississauga, ON,
Delta Airport West Hotel

Babak Beheshti
IEEE SAC Chair

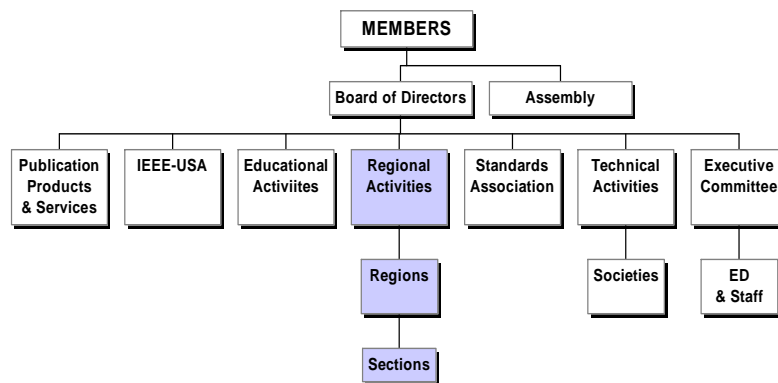


What is IEEE?

- More than 365,000 members in over 150 countries, almost 40 percent of whom are from outside the United States.
- Over 68,000 student members.
- More than 27,000 society affiliates.
- 307 sections.
- 1,446 chapters.
- More than 1,300 student branches in 80 countries.
- Over 300 student branch chapters.
- More than 147 affinity groups.
- 39 societies and 3 technical councils.
- As of Jan.2005, there were more than 1.1 million documents in the IEEE/IEE Electronic Library.
- The IEEE publishes a total of 128 transactions, journals and magazines.
- The IEEE sponsors more than 300 conferences each year.
- The IEEE Standards Association has more than 8,350 individual and almost 60 corporate members.



IEEE Org Chart



MGA STUDENTS COMMITTEE



MGA STUDENT ACTIVITIES COMMITTEE FUNCTIONS

- SAC IS THE STUDENTS COMMITTEE OF THE MEMBER AND GEOGRAPHIC ACTIVITIES BOARD (MGA).
- SAC'S CONSTITUENTS ARE UNDERGRADUATE AND GRADUATE STUDENTS WHO HAVE INTEREST IN IEEE DESIGNATED FIELDS - ENGINEERING, COMPUTER SCIENCE AND INFORMATION TECHNOLOGY, PHYSICAL SCIENCES, BIOLOGICAL AND MEDICAL SCIENCES, MATHEMATICS, TECHNICAL COMMUNICATIONS, EDUCATION, MANAGEMENT, LAW AND POLICY.
- SAC PROVIDES RECOMMENDATIONS TO MGA ON OVERALL POLICY AND PROCEDURES REGARDING THE IEEE STUDENT PROGRAM, STUDENT SERVICES AND ACTIVITIES AND STUDENT MEMBERS.



MGA STUDENTS COMMITTEE FUNCTIONS

- SAC STRIVES TO IMPROVE THE QUALITY OF STUDENT MEMBERSHIP.
- SAC STRIVES TO MAKE STUDENTS AWARE OF RESPONSIBILITIES OF THE ENGINEERING PROFESSION.
- SAC STRIVES TO REPRESENT THE INTERESTS AND CONCERNS OF STUDENTS WORLDWIDE.
- SAC STRIVES TO PROMOTE THE IMPORTANCE OF NETWORKING AND RELATIONSHIP BUILDING
- SAC STRIVES TO INCREASE SYNERGY BETWEEN SAC AND OTHER IEEE UNITS.
- SAC STRIVES TO FOSTER STUDENT BRANCH DEVELOPMENT.
- SAC STRIVES TO PROVIDE EFFICIENT COMMUNICATIONS BETWEEN IEEE AND STUDENT MEMBERS.



MGA STUDENTS COMMITTEE COMPOSITION

- SAC CHAIR, VICE CHAIR, PAST CHAIR
- FROM EACH OF THE 10 REGIONS - "Our link to the students"
 - 10 REGIONAL STUDENT REPRESENTATIVES - RSR
 - 10 REGIONAL STUDENT ACTIVITIES CHAIR - RSAC
- REPRESENTATIVES - "to remind us of the big world out there"
 - UP TO SIX INDUSTRY REPRESENTATIVES
 - STUDENT PROFESSIONAL AWARENESS REPRESENTATIVE
 - BRANCH CHAPTER REPRESENTATIVE
 - BRANCH CHAPTER STUDENT REPRESENTATIVE
 - IEEE POTENTIALS EDITOR & STUDENT EDITOR
 - TECHNICAL ACTIVITIES BOARD REPRESENTATIVE
 - IEEE-USA SPAC COMMITTEE CHAIR
 - GOLD COMMITTEE REPRESENTATIVE
- IEEE STAFF - "amazing people that make us look good & allow us to accomplish great things"
 - MGA SECRETARY (ex officio)
 - MANAGER STUDENT SERVICES (serves as secretary, no vote)



MGA STUDENT ACTIVITIES COMMITTEE

- MEMBERSHIP REQUIREMENTS
 - IEEE MEMBER OF STUDENT, GRADUATE STUDENT MEMBER, MEMBER, SENIOR MEMBER OR FELLOW GRADE
- APPOINTMENTS, ELECTIONS AND TERMS OF OFFICE
 - COMMITTEE MEMBERS - ONE YEAR TERM WITH REAPPOINTMENT PERMISSABLE
 - COMMITTEE CHAIR - ONE YEAR TERM WITH REAPPOINTMENT PERMISSABLE FOR UP TO TWO ADDITIONAL ONE YEAR TERMS
 - OTHER MEMBERS - AD-HOC BASIS BY APPOINTMENT OF COMMITTEE CHAIR FOR IN CONNECTION WITH SPECIFIC PROJECTS
- MEETINGS
 - OCCURS AT THE CALL OF THE CHAIR
 - INTERIM MEETINGS & BUSINESS VIA ELECTRONIC MAIL AND TELECONFERENCE
 - QUORUM IS MAJORITY OF VOTING MEMBERS
 - VOTING BY MAJORITY VOTE WITH CHAIR AS TIE BREAKER



MGA STUDENT ACTIVITIES COMMITTEE COMPOSITION

- COMMITTEES/SUB-COMMITTEES/AD HOC COMMITTEE CHAIRS

- COMMITTEE CHAIR MUST BE A MEMBER OF THE SAC
- APPOINTED BY SAC CHAIR

- COMMITTEES/SUB-COMMITTEES/AD HOC COMMITTEES

- REGIONAL STUDENT REPRESENTATIVE (RSR) STEERING SUBCOMMITTEE
- REGIONAL STUDENT ACTIVITIES CHAIR (RSAC) STEERING SUBCOMMITTEE
- AWARDS & RECOGNITION SUBCOMMITTEE
- BRANCH LEADERSHIP TRAINING SUBCOMMITTEE
- STUDENT PROFESSIONAL AWARENESS ACTIVITIES SUBCOMMITTEE
- POTENTIALS MAGAZINE SUBCOMMITTEE
- ELECTRONIC COMMUNICATIONS SUBCOMMITTEE



MGA STUDENTS COMMITTEE MEMBERS

CHAIR

BABAK BEHESHTI

VICE CHAIR

MARKO DELIMAR

PAST CHAIR

JIM RIESS

STANDING COMMITTEES

CHAIR

- RSR STEERING

ELIZABETH JOHNSTON

- RSAC STEERING

MARTIN BASTIAANSI

- COMMUNICATIONS

RICARDO VARELA

- POTENTIALS

SUZANNE RIVIORE

- AWARDS & RECOGNITION
BRANCH LEADERSHIP TRAINING

ELIZABETH JOHNSTON
ANU GOKHALE

-STUDENT PROFESSIONAL AWARENESS

CO-CHAIRS MARKO DELIMAR

-

JOHN PASERBA



MGA STUDENTS COMMITTEE MEMBERS

RSAC STEERING COMMITTEE

REGION 1 - BABAK BEHESTI REGION 2 - SHREEKANTH MANDAYAM
REGION 3 - ERIC ACKERMAN REGION 4 - ANU GOKHALE
REGION 5 - FRANCIS GROSZ REGION 6 - RAHIM KHOIE
REGION 7 - JANET BRADLEY REGION 8 - MARTIN BASTIAANS
REGION 9 - ANTONIO DORIA REGION 10 - MINI THOMAS

RSR STEERING COMMITTEE

REGION 1 - ELIONORA VIDOLOVA REGION 2 - JOSEPH LOPEZ, III
REGION 3 - RAVI TODI REGION 4 - DAVID MATTHEWS
REGION 5 - ENRIQUE GRANJA REGION 6 - ELIZABETH JOHNSTON
REGION 7 - RANDY GLENN REGION 8 - MICHAEL GLOEGL
REGION 9 - JONATHON TAVIRA REGION 10 - GOPAL BALAKRISHNAN



MGA STUDENTS COMMITTEE MEMBERS

ADHOC COMMITTEE CHAIRS

-SAC/GOLD TRANSITION MEGHA JOSHI
-STRATEGIC PLANNING JIM RIESS
-BRANCH COUNSELOR SUPPORT MINI THOMAS
-IEEE GLOBALIZATION SALOMON HERRERA

INDUSTRIAL REPRESENTATIVES

R. BARNETT ADLER
PETER MAUZEY
JOHN PASERBA
RAVI TODI

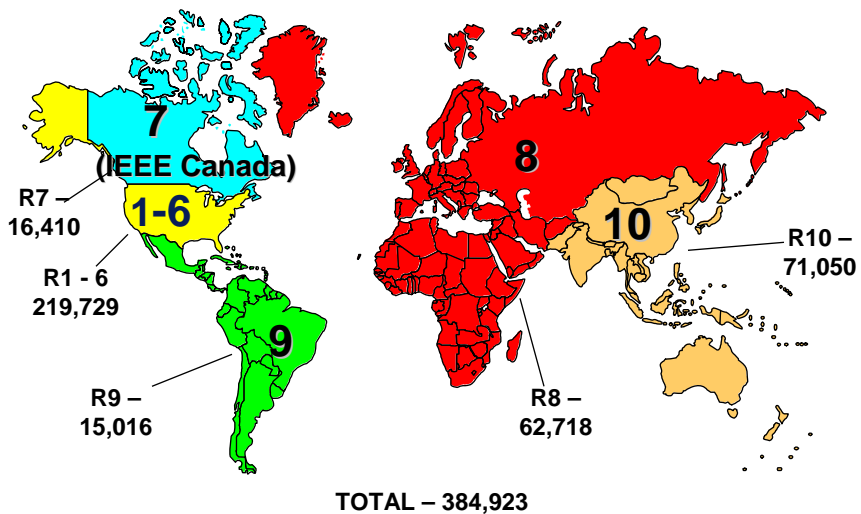
IEEE STAFF

CECELIA JANKOWSKI
LAURA DURRETT



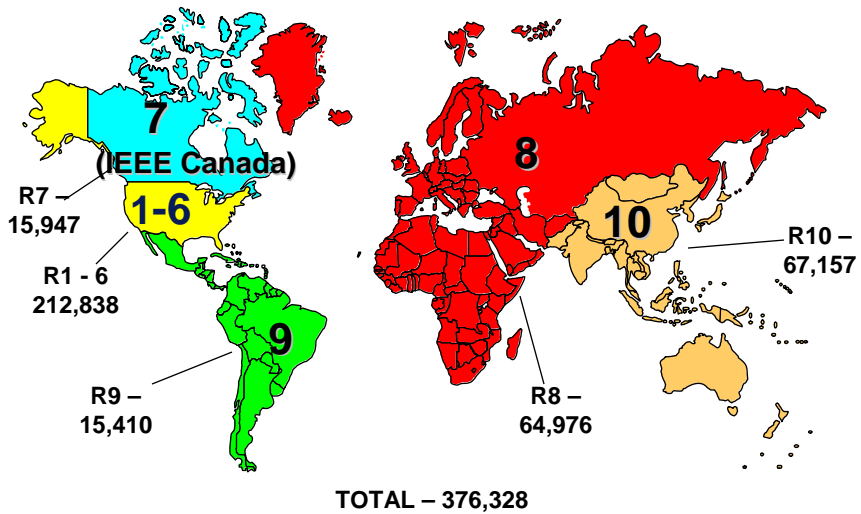
IEEE Membership By Regions

January 2007

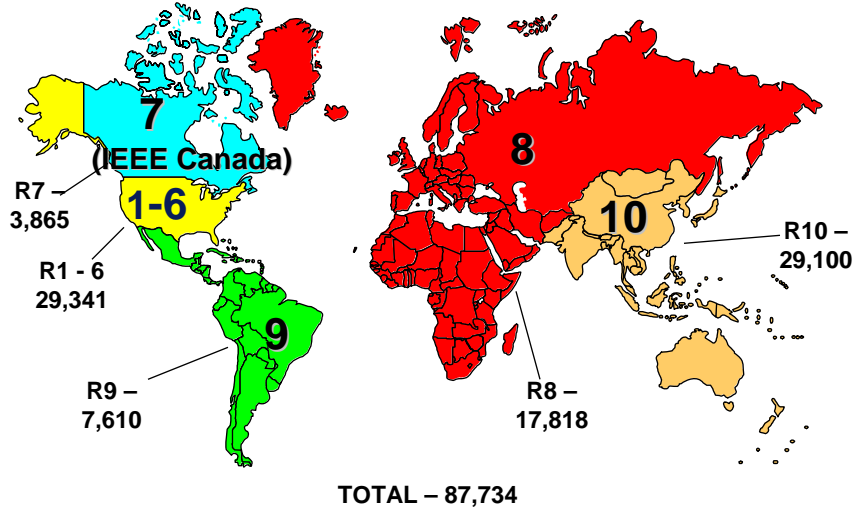


IEEE Membership By Regions

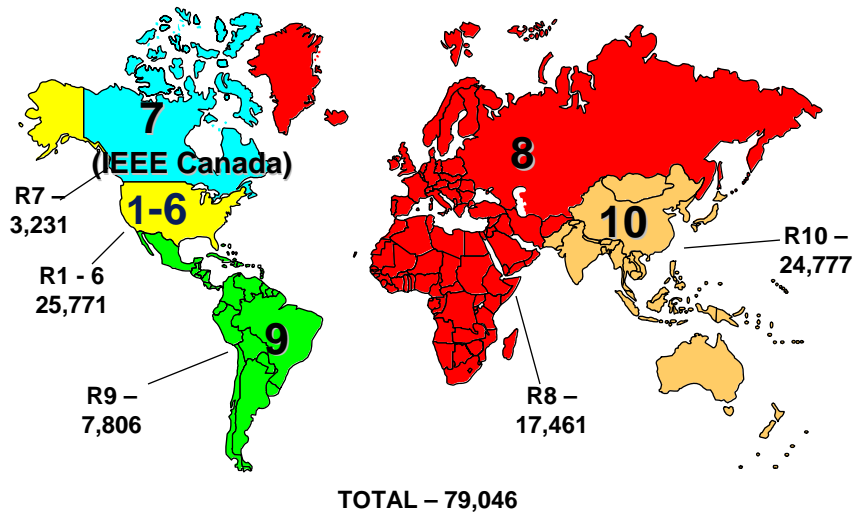
December 2007



IEEE Student Membership By Regions January 2007



IEEE Student Membership By Regions December 2007



GRADUATE STUDENT MEMBER



GRADUATE STUDENT MEMBER

- New graduate student member (GSM) grade completed August 2007.
- GSMs to continue to pay student dues rate.
- Able to vote in IEEE elections in 2006 and 2007.
- Eligible to hold volunteer positions in IEEE sections, chapters, and the affinity groups.



GRADUATE STUDENT MEMBER

- Must have earned a bachelor's (or equivalent) degree from an accredited institution in a program within the IEEE's designated fields of interest.
- Must be registered graduate student in regular graduate course of study in one of IEEE fields and carry at least half of a full-time academic program.



GRADUATE STUDENT MEMBER

- Student and graduate student member grades can be held for a combined total of eight years.
- After graduation or upon reaching eight-year limit, graduate student members will be elevated automatically to member grade.



www.ieee.org/students

Click on

“Scholarships, Awards,
Contests and Grants”



DARREL CHONG STUDENT
ACTIVITY AWARD



DARREL CHONG STUDENT ACTIVITY AWARD

- Conducted by IEEE Student Activities Committee
- Changes the student branch mindset from being number-driven to being value-driven.
- Improve quality of activities .



DARREL CHONG STUDENT ACTIVITY AWARD

- Foster sharing of knowledge among student branches.
- Encourage and motivate student branches to innovate and implement meaningful ideas.
- Each student branch may enter as many activities as they want.



DARREL CHONG STUDENT ACTIVITY AWARD

- Student branches submit deSAC rription of organized activity.
- Award status of platinum, gold, silver, bronze or unrated.
- No limit in number of winners.
- Allows same activity to be elevated to higher medal based on future improvements in subsequent years.



DARREL CHONG STUDENT ACTIVITY AWARD

- Deadline is September 30.
- Judging criteria includes the Concept (0-20 pts), Implementation (0-20 pts), Repeatability (0-15 pts), and Results and Outcome (0-45 pts).



IEEE XTREME 24 HOUR PROGRAMMING CONTEST



IEEE XTREME 24 HOUR PROGRAMMING CONTEST

- Goals:
 - Give branches a new interesting and fun activity, while promoting interaction between Section, SB and University in both local and global SAC ale.
 - Increase the number of activities aimed at computer programming fans in IEEE.
 - Be different from other competitions (like TopCoder or ACM's) and from other IEEE activities



IEEE XTREME 24 HOUR PROGRAMMING CONTEST

- IEEE Xtreme is a worldwide contest in which teams of student members, supported by a Student Branch and proctored by an IEEE Member, compete in a 24-hour time span against each other to solve a set of programming problems



IEEE XTREME 24 HOUR PROGRAMMING CONTEST

- Teams will be formed by up to 3 student members (StM or GSMs)
- Student Branches will host the event for their local team, with support of their local Sections and Universities
- Each of these places where competition is hosted (ranging from private residences or SB offices to College labs) is called a Venue



IEEE XTREME 24 HOUR PROGRAMMING CONTEST

- The problems will be proposed and judged by the **Contest Committee**, a panel of experts from both Academia and Industry
- An **Organization Committee** formed by IEEE volunteers will take care of the management part of the contest (like enrollment or problem submission)



IEEE XTREME 24 HOUR PROGRAMMING CONTEST

- Teams should submit their problem solutions electronically using a contest management page
- Each submission gets a timestamp (extra points for early submission)
 - Infrastructure should be put in place to solve possible bottlenecks (use distributed submission)



IEEE XTREME 24 HOUR PROGRAMMING CONTEST

- Winning teams will receive prizes and plaques, both for them and their SAC hools (as we're using their collaboration)
- The recognition ceremony should probably be organized as part of a Region / Section event, and with collaboration from the Region / Section SAC, if possible
- Our suggestion is that a funny prize is worth more than money (take into account the nature of the contest)
- We can easily extend the contest format to include in-person finals if at any time we want to do so



IEEE STUDENT ENTRPRISE AWARD



IEEE STUDENT ENTRPRISE AWARD

- Objective is to provide opportunities for IEEE Student Members to enhance professional development skills by developing collaborative projects related to engineering and technology.
- Projects ideas range from robotics and system design to programs to benefit the community.



IEEE STUDENT ENTRPRISE AWARD

- This program is supported by the IEEE MGA Student Activities Committee.
- Proposals are evaluated by the awards & recognition subcommittee of MGA SAC.
- Judges carefully consider proposals and score them on established criteria.



IEEE STUDENT ENTRPRISE AWARD

- Six awards valued up to \$1500 each are available annually.
- Deadline for proposals is November 15.



REGIONAL EXEMPLARY STUDENT BRANCH AWARD



REGIONAL EXEMPLARY STUDENT BRANCH AWARD

- Public recognition of exemplary IEEE student branch operations.
- Must be nominated by an officer of the branch.
- Awards are presented to nominated branches meeting 6 required items and at least 12 elective items of documentation indicated on the nomination form.



MGA LARRY K. WILSON REGIONAL STUDENT ACTIVITIES AWARD



MGA LARRY K. WILSON REGIONAL STUDENT ACTIVITIES AWARD

- In memory of Dr. Wilson who strongly supported student activities.
- One award per Region for students that are most responsible for an extraordinary accomplishment associated with student activities.



MGA LARRY K. WILSON REGIONAL STUDENT ACTIVITIES AWARD

- Designed to reward a particular event or product of IEEE activities.
- May be nominated by a Branch Counselor, Section Chair or Section SAC Chair.
- Nominees must be student members at the time of the accomplishment.



STUDENT PAPER CONTEST



STUDENT PAPER CONTEST

- Offers Undergraduates an opportunity to exercise and improve both written and verbal communication skills.
- No student should be discouraged from entering the contest due to false requirement of technical sophistication.
- An entrant may collaborate with additional students.



STUDENT PAPER CONTEST

- Papers cover technical, engineering, management, or societal aspects.
- Written presentation evaluation includes form (0-70 pts) and for subject matter (0-40 pts).
- Oral presentation evaluation includes form (0-60 pts) and subject matter (0-30 pts)



STUDENT BRANCH WEB SITE CONTEST



STUDENT BRANCH WEB SITE CONTEST

- Each Student Branch may enter only one Web Site regardless of the number of Branch Chapters.
- For the international contest, a Region that has more than 10 and less than 20 entries may submit 2 entries in the finals. A Region that has 20 or more entries may submit 3 entries in the finals.



STUDENT BRANCH WEB SITE CONTEST

Judging criteria include:

- Content (0-30 points)
- Navigability (0-25 points)
- Originality (0-15 points)
- Overall Presentation (0-15 points)
- Portability (0-10 points)
- Load Time (0-5 points)



MICROMOUSE CONTEST



MICROMOUSE CONTEST

- Objective is to build a robot to negotiate a specified maze in the shortest time.
- The maze is comprised of 16 X 16 multiples of 18 cm X 18 cm unit square with walls that are 5 cm high.
- The micromouse robot shall not exceed 25 cm in length and 25 cm in width.
- The micromouse is to travel from the start square to the destination square.



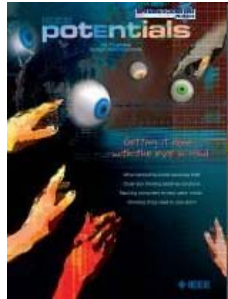
ETHICS CONTEST



ETHICS CONTEST

- Designed to provide experience in applying ethical concepts to situations that might arise in the workplace.
- A case study posing an ethical dilemma is given to teams.
- After three hours, teams explain to a panel of judges how the case should be handled ethically.





POTENTIALS



POTENTIALS

- IEEE Publication dedicated primarily for students.
- R8-R10 Students can subscribe to the print version for US\$5.
- All members, including students, have online access through IEEE Xplore.
- Visit <http://www.ieee.org/potentials> for author guidelines.



Thank You

Babak Beheshti
b.beheshti@ieee.org

