

# Elimination of DC Offset in Accurate Phasor Estimation Using Recursive Wavelet Transform

J. Ren, *Student Member, IEEE*, M. Kezunovic, *Fellow, IEEE*

**Abstract**— DC offset has significant effect on extracting fundamental frequency components. It directly impacts the accuracy of the fundamental frequency component based protective relaying algorithms. This paper proposes a novel method for estimating the fundamental phasor while eliminating the dc offset using improved recursive wavelet transform. The proposed approach converges to the actual value in less than one cycle, and the computation burden is fairly low because of the recursive formula. Studies indicate that to achieve a certain level of accuracy, the higher sampling frequency one uses, the shorter data window the computation needs, and vice versa. Comparing with conventional DFT filter, simulation results demonstrate that the proposed phasor estimation method achieves better performance.

**Index Terms**—protective relaying, fundamental frequency component, phasor estimation, dc offset, improved recursive wavelet transform, data window, conventional DFT filter

## I. INTRODUCTION

IN protective relaying application, Discrete Fourier Transform (DFT) is widely used as a filtering algorithm for extracting fundamental phasors [1], [2]. Conventional DFT algorithm achieves excellent performance when the signals contain only fundamental frequency and integer harmonic frequency components. Since in most cases the currents contain DC offsets this may introduce fairly large errors in the estimation of fundamental frequency phasor [3], [4].

Many techniques have been proposed to eliminate the DC offset in waveforms. A digital mimic filter based method was proposed in [5]. This filter features high-pass frequency response which results in bringing high frequency noise to the outcome. It performs well when its time constant matches the time constant of the exponentially decaying component. Theoretically, the decaying component can be completely removed from the original waveform once its parameters can be obtained. Based on this idea, [6], [7] utilize additional samples to calculate the parameters of the decaying component. Reference [8] uses the simultaneous equations derived from the harmonics. A new Fourier algorithm and three simplified algorithms based on Taylor expansion were proposed to eliminate the decaying component in [9]. In [10], author estimates the parameters of the decaying component by using the phase angle difference between voltage and current. This method requires both voltage and current inputs. As a

result, it is not applicable to the current-based protection schemes.

Recursive wavelet approach has been introduced in protective relaying for a long time [11]-[13]. The improved model with single-direction recursive equations is more suitable for the application to real-time signal processing [14]. The band energy of any center frequency can be extracted through improved recursive wavelet transform (IRWT) with moderately low computation burden. Recursive wavelet features band-pass filter achieves good performance in suppressing the sub-harmonic components. A novel filtering approach using IRWT is proposed for estimating the fundamental frequency phasor while eliminating the effect of dc offset.

This paper first introduces the recursive wavelet transform and its characteristics in the time and frequency domain. The phasor estimation and DC offset removal algorithm are presented next. The relationship between the convergence and the sampling rate is studied as well. It indicates that to achieve a certain level of accuracy, the higher sampling rate one uses, the shorter data window it needs, and vice versa. Simulation results demonstrate the effectiveness of the proposed phasor estimation method. It converges to the actual value in less than one cycle, and the computation burden is fairly low because of the recursive formula, thus it can satisfy the time response requirement of the high speed relaying schemes.

## II. FILTERING ALGORITHM

### A. Characteristics of Conventional DFT Filters

In terms of the length of the data window used for the filtering calculation, conventional Discrete Fourier Transform (DFT) can be classified into two categories: Full Cycle DFT (FCDFT) and Half Cycle DFT (HCDFT). Frequency responses of FCDFT and HCDFT shown in Fig. 1 and Fig. 2 respectively indicate the performance in suppressing integer frequency harmonics. The sub-harmonic components and DC offset can not be easily eliminated with conventional DFT filters. This can be seen from Fig. 3, which presents the frequency spectrum of a set of exponentially decaying signals with a broad range of time constants (0.5 to 5 cycles). In power system, DC offset widely exists in voltage and current signals when various disturbances occur, such as fault or oscillation, and it may cause the calculated amplitude deviate from the real value 15% in worst case [9].

---

J. Ren and M. Kezunovic are with the Department of Electrical and Computer Engineering, Texas A&M University, College Station, TX 77843-3128, USA (e-mails: j.f.ren@neo.tamu.edu, kezunov@ece.tamu.edu).

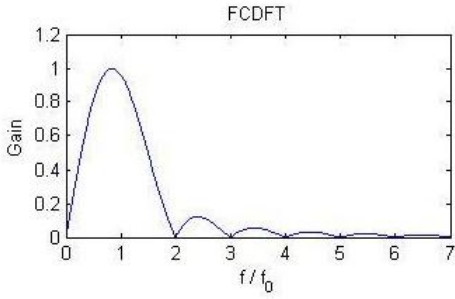


Fig. 1. Frequency response of the FCDFT

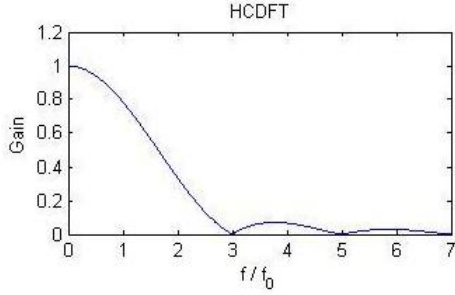


Fig. 2. Frequency response of the FCDFT

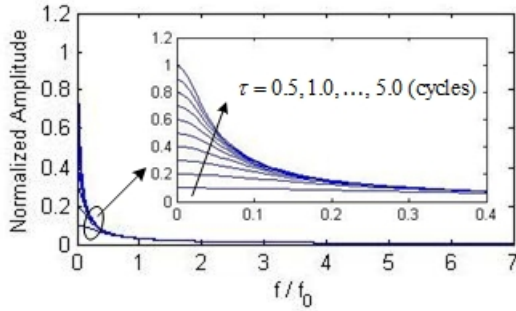


Fig. 3. Amplitude-frequency characteristic of exponentially decaying signals

### B. Improved Recursive Wavelet Transform

The mother wavelet is given as:

$$\psi(t) = \left( -\frac{\delta^3 t^3}{3} - \frac{\delta^4 t^4}{6} - \frac{\delta^5 t^5}{15} \right) e^{(\delta + j\omega_0)t} u(-t)$$

A set of wavelet functions can be created by dilating and shifting the mother wavelet, as given below:

$$\psi_{a,b}(t) = a^{-1/2} \cdot \psi\left(\frac{t-b}{a}\right)$$

The wavelet coefficient for a given signal  $x(t)$  can be expressed as below:

$$W_{x(t)}(a,b) = a^{-1/2} \int_{-\infty}^{+\infty} x(t) \cdot \psi\left(\frac{t-b}{a}\right)^* dt \quad (1)$$

Assign  $\delta = 2\pi/\sqrt{3}$ ,  $\omega_0 = 2\pi$  thus  $\psi(t)$  is admissible.

Besides, we have  $a = 1/f$ , that is the scale coefficient  $a$  is reciprocal to the frequency  $f$  used in the analysis.

Improved Recursive Wavelet (IRW) exhibits good time-frequency characteristics. Fig. 4 shows its real part and

imaginary part in time domain. The real part, imaginary part and magnitude of the frequency characteristics are given in Fig. 5, where  $a = 1/f_0$ . As we can see in Fig. 5, IRW features a band-pass filter with the center frequency  $f_0$ .

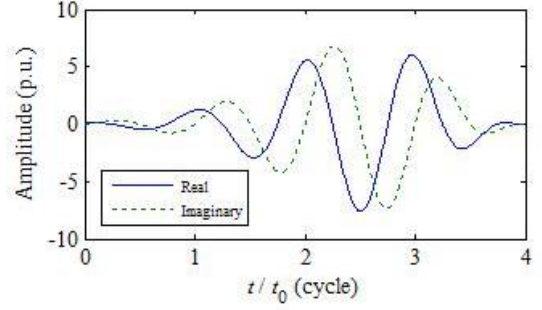


Fig. 4. Waveforms of IRW in time domain

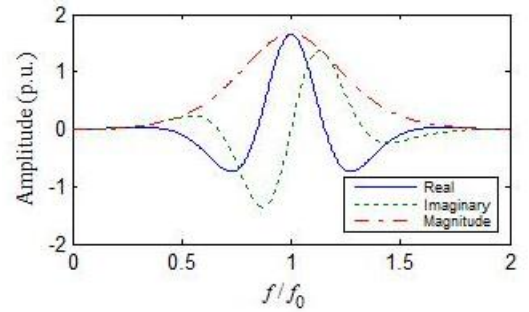


Fig. 5. Waveforms of IRW in frequency domain

Assume the input signal  $x(k)$  and the sampling period  $\Delta T$ , the formula of improved recursive wavelet transform is given as follows:

$$\begin{aligned} W_{x(k)}^{IR}(f,k) = & \Delta T \sqrt{f} \{ \lambda_1 x(k-1) + \lambda_2 x(k-2) \\ & + \lambda_3 x(k-3) + \lambda_4 x(k-4) + \lambda_5 x(k-5) \} \\ & - \beta_1 W_{x(k)}^{IR}(f,k-1) - \beta_2 W_{x(k)}^{IR}(f,k-2) \\ & - \beta_3 W_{x(k)}^{IR}(f,k-3) - \beta_4 W_{x(k)}^{IR}(f,k-4) \\ & - \beta_5 W_{x(k)}^{IR}(f,k-5) - \beta_6 W_{x(k)}^{IR}(f,k-6) \end{aligned} \quad (2)$$

where,

$$\sigma = e^{-f\Delta T(\alpha - j\omega_0)}$$

$$\lambda_1 = \sigma[(\alpha f \Delta T)^3 / 3 - (\alpha f \Delta T)^4 / 6 + (\alpha f \Delta T)^5 / 15]$$

$$\lambda_2 = \sigma^2 [2(\alpha f \Delta T)^3 / 3 - 5(\alpha f \Delta T)^4 / 3 + 26(\alpha f \Delta T)^5 / 15]$$

$$\lambda_3 = \sigma^3 [-6(\alpha f \Delta T)^3 / 3 + 22(\alpha f \Delta T)^5 / 5]$$

$$\lambda_4 = \sigma^4 [2(\alpha f \Delta T)^3 / 3 + 5(\alpha f \Delta T)^4 / 3 + 26(\alpha f \Delta T)^5 / 15]$$

$$\lambda_5 = \sigma^5 [(\alpha f \Delta T)^3 / 3 + (\alpha f \Delta T)^4 / 6 + (\alpha f \Delta T)^5 / 15]$$

$$\beta_1 = -6\sigma, \beta_2 = 15\sigma^2, \beta_3 = -20\sigma^3$$

$$\beta_4 = 15\sigma^4, \beta_5 = -6\sigma^5, \beta_6 = \sigma^6$$

### III. PHASOR ESTIMATION SCHEME

#### A. Estimating Phasor Using IRWT

Consider a sinusoidal signal expressed in complex form:

$$x(t) = A_m e^{j(\omega t + \theta)} \quad t \geq 0$$

where  $A_m$  is the amplitude,  $\theta$  is the phase angle.

Apply IRWT to signal  $x(t)$  using (1). As derived in Appendix, we obtain,

$$W_{x(t)}(a, b) = A_m e^{j(\omega b + \theta)} \cdot I(a, b) \quad (3)$$

Assume the sampling frequency  $f$  equals  $N$  times the fundamental frequency  $f_0$ . That is  $f = Nf_0$ , and the sample period is  $\Delta T = 1/f_0 \cdot N$ ,  $t = \Delta T \cdot k$ . The discrete expression of equation (3) is:

$$W_{x(k)}(a, k) = A_m e^{j(\omega k \cdot \Delta T + \theta)} \cdot I(a, k)$$

To extract the fundamental component, simply let  $a = 1/f_0$ .

From (2) we have the coefficient  $W_{x(k)}^{IR}(a, k)$ . Select proper sampling rate so that the error resulting from the discrete data computation is within the limit of tolerance, we have  $W_{x(k)}(a, k) = W_{x(k)}^{IR}(a, k)$ . That is:

$$\begin{aligned} A_m e^{j(2\pi \cdot k / N + \theta)} &= W_{x(k)}^{IR}(a, k) / I(a, k) \\ &= \left| W_{x(k)}^{IR}(a, k) / I(a, k) \right| e^{j\varphi} \end{aligned}$$

Thus,

$$A_m = \left| W_{x(k)}^{IR}(a, k) / I(a, k) \right|, \quad \theta = \varphi - 2\pi \cdot k / N \quad (4)$$

In above formula,  $W_{x(k)}^{IR}(a, k)$  is the wavelet transform coefficient calculated by the recursive equation (2).  $I(a, k)$  is constant given in Appendix which can be calculated in advance.

#### B. Eliminating Exponentially Decaying Component

Consider a signal consisting of exponentially decaying component,

$$y(t) = D_\tau e^{-t/\tau} + x(t) \quad t \geq 0$$

where  $D_\tau$  is the amplitude,  $\tau$  is the time constant.

Apply IRWT to signal  $y(t)$  using (1). The IRWT coefficient of signal  $y(t)$  derived in Appendix is given as

$$W_{y(t)}(a, b) = I_\tau(a, b) \cdot D_\tau e^{-b/\tau} + W_{x(t)}(a, b)$$

As we can see from above equation,  $D_\tau$  and  $\tau$  can be calculated by subtracting  $I(a, b) \cdot x(t)$  from  $W_{y(t)}(a, b)$ . Introducing the wavelet transform coefficient of signal  $y(t)$  by applying formula (2) with  $a = 1/f_0$ , in discrete form, we have

$$\begin{aligned} W_{y(k)}^{IR}(a, k) - I(a, k) \cdot y(k) \\ = [I_\tau(a, k) - I(a, k)] \cdot D_\tau e^{-\Delta T \cdot k / \tau} \end{aligned}$$

Designate

$$g(\tau, k) = I_\tau(a, k) - I(a, k)$$

$$h(k) = W_{y(k)}^{IR}(a, k) - I(a, k) \cdot y(k),$$

We obtain

$$g(\tau) \cdot D_\tau e^{-\Delta T \cdot k / \tau} = h(k) \quad (5)$$

Introduce additional sample  $y(k+1)$

$$g(\tau) \cdot D_\tau e^{-\Delta T \cdot (k+1) / \tau} = h(k+1) \quad (6)$$

where

$$h(k+1) = W_{y(k+1)}^{IR}(a, k+1) - I(a, k) \cdot y(k+1)$$

From (5) and (6), we obtain,

$$\tau = \frac{\Delta T}{\log h(k) / h(k+1)}, \quad D_\tau = \frac{h(k)}{g(\tau) \cdot e^{-\Delta T \cdot k / \tau}}$$

It should be noticed that  $g(\tau)$  is known after  $\tau$  is calculated. Then, the decaying component can be removed completely by the following formulae:

$$A_m e^{j(2\pi \omega k / N + \theta)} = \left| \frac{W_{y(k)}^{IR}(a, k) - I_\tau(a, k) \cdot D_\tau e^{-\Delta T \cdot k / \tau}}{I(a, k)} \right| e^{j\varphi_1}$$

Therefore, we have

$$A_m = \left| \frac{W_{y(k)}^{IR}(a, k) - I_\tau(a, k) \cdot D_\tau e^{-\Delta T \cdot k / \tau}}{I(a, k)} \right| \quad (7)$$

$$\theta = \varphi_1 - 2\pi \cdot k / N$$

#### C. Analysis of the Impact of Data Window Length

Theoretically, the amplitude and phase angle of the input signal can be accurately estimated using (7) by two samples, which means the length of the data window would be  $2 \cdot \Delta T$ . In reality two factors should be considered when selecting the data window length. One is that formula (4) and (7) are derived based on the assumption that the error resulting from the discrete computation is negligible. Another is the error introduced by the recursive calculation.

In practical application, the length of the data window should be selected in terms of the sampling frequency. Fig. 6 presents the convergence characteristics of the proposed filtering algorithm vs. the sampling frequency. In Fig. 6, the window length is one cycle of the fundamental frequency;  $f$  is the sampling frequency while  $f_0$  is the fundamental frequency.

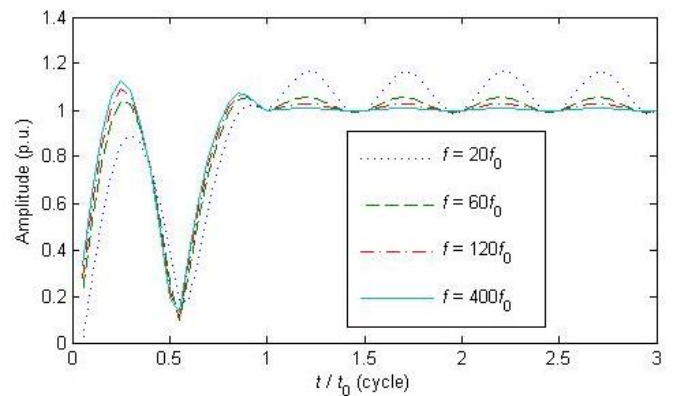


Fig. 6. Convergence characteristics vs. sampling frequency

To obtain certain accuracy of 1% of the real value, the relationship between sampling frequency  $f$  and data window length  $T_s$  is studied considering various phase angles of input signals, as shown in Fig. 7, where  $\theta$  is the phase angle of the input signal. We can conclude that higher sampling rate

shortens the data window and expedites the convergence process for the phasor estimation.

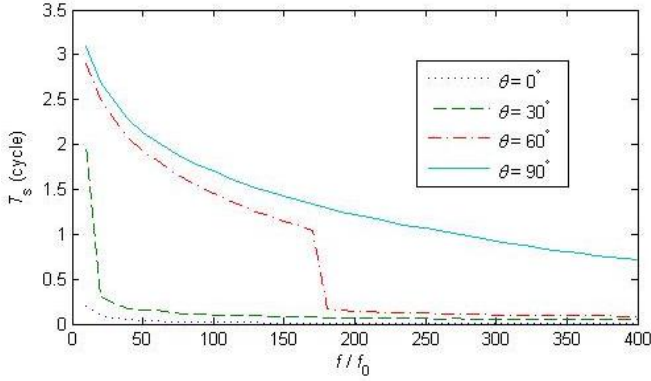


Fig. 7. Sampling frequency vs. data window length

#### IV. PERFORMANCE TEST

In this section, an input signal comprising fundamental frequency component and exponentially decaying component is used to test the performance of the proposed phasor estimate and DC offset elimination schemes. The time constant  $\tau$  is studied over a broad range 0.5–5 cycles. The results are compared with the conventional DFT (full cycle and half cycle) method. Select  $N = 400$ ,  $T_s = 0.75$  cycle,  $f_0 = 60$  Hz,  $A_m = 1$  p.u.,  $\theta = 60^\circ$ . Consider the severe condition, that is the fundamental frequency component and decaying component have the same amplitude. The input signal is described in complex form:

$$y(k) = A_m e^{-k \cdot \Delta T / \tau} + A_m e^{j(\pi \cdot k / 200 + \theta)}$$

Apply formula (7) and obtain the amplitude and phase angle of the input signal  $y(k)$ . Fig. 8 and Fig. 9 give the calculated amplitudes and phase angles in four cycles over  $\tau = 1.0$  cycle respectively using the full cycle DFT, half cycle DFT and the proposed algorithm. The convergence time of the proposed algorithm is 0.75 cycle, and the calculation errors are 0.2662% and 0.2138% for amplitude and phase angle respectively.

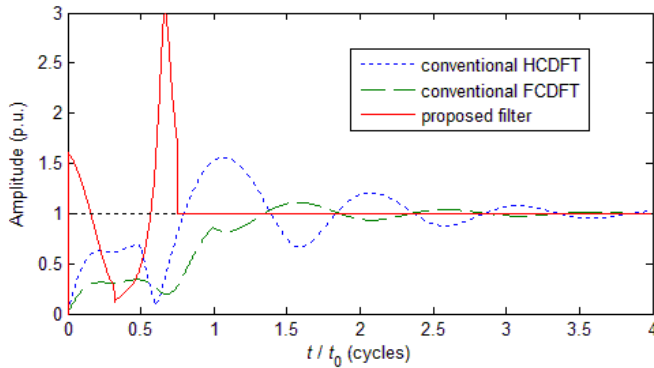


Fig. 8 Amplitude of the estimated phasor

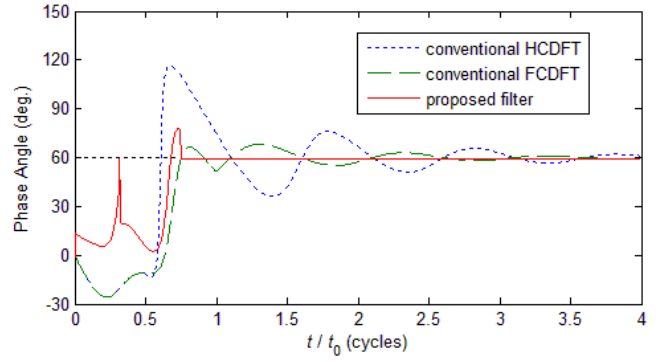


Fig. 9 Phase angle of the estimated phasor

Table I summarizes the test results, in which the estimated values are obtained at half cycle, full cycle and 0.75 cycle for HCDF, FCDF and proposed filter respectively. The phase error is calculated in full scale ( $360^\circ$ ).

TABLE I  
SUMMARY OF TEST RESULTS

$\tau$ (cycle)	Filter Type	Estimate Value		Error (%)	
		$A_m$ (p.u.)	$\theta$ (deg)	$Err_{A_m}$	$Err_\theta$
0.5	HCDF	0.7623	5.6721	23.7734	15.0911
	FCDF	0.8473	46.6454	15.2655	3.7096
	Proposed	1.0034	59.2125	0.3387	0.2187
1	HCDF	0.6796	-11.1511	32.0379	19.7642
	FCDF	0.8559	51.4980	14.4133	2.3617
	Proposed	1.0027	59.2304	0.2662	0.2138
2	HCDF	0.6522	-23.4222	34.7817	23.1728
	FCDF	0.9005	55.4360	9.9481	1.2678
	Proposed	1.0025	59.2037	0.2521	0.2212
3	HCDF	0.6483	-28.1817	35.1729	24.4949
	FCDF	0.9262	56.9217	7.3844	0.8551
	Proposed	1.0024	59.1922	0.2391	0.2244
4	HCDF	0.6477	-30.6813	35.2314	25.1893
	FCDF	0.9416	57.6840	5.8434	0.6433
	Proposed	1.0024	59.1859	0.2411	0.2261
5	HCDF	0.6478	-32.2173	35.2169	25.6159
	FCDF	0.9517	58.1454	4.8275	0.5152
	Proposed	1.0024	59.1788	0.2442	0.2281

#### V. CONCLUSIONS

DC offset has significant effect on extracting the fundamental frequency components. Conventional DFT filters can not easily eliminate it when estimating the components of interest. This directly impacts the accuracy of the fundamental frequency component based protective relaying algorithms. This paper proposes a novel method for estimating the fundamental phasor and eliminating the DC offset using improved recursive wavelet transform. Studies indicate that the convergence of proposed algorithm is related to the sampling frequency. To achieve a certain level of accuracy, the higher sampling rate one uses, the shorter data window it needs, and vice versa. The proposed method converges to correct results within one cycle, and the computation burden is fairly low because of the recursive formula. Comparing with conventional DFT filter, performance tests demonstrate that the proposed method achieves very good results.

## VI. APPENDIX

The IRWT coefficient of the input signal  $x(t)$  is:

$$\begin{aligned} W_{x(t)}(a, b) &= a^{-1/2} \int_0^b x(t) \cdot \psi^* \left( \frac{t-b}{a} \right) dt \quad b \geq 0 \\ &= a^{-1/2} \int_0^b A_m e^{j(\alpha t + \theta)} \cdot \left[ -\frac{\delta^3}{3} \left( \frac{t-b}{a} \right)^3 - \frac{\delta^4}{6} \left( \frac{t-b}{a} \right)^4 \right. \\ &\quad \left. - \frac{\delta^5}{15} \left( \frac{t-b}{a} \right)^5 \right] e^{(\delta - j\omega_0) \left( \frac{t-b}{a} \right)} dt \end{aligned}$$

Denote

$$t = k \cdot a + b, \quad k \in [-b/a, 0]$$

$$\eta_1 = \delta + j(a\omega - \omega_0)$$

We have

$$\begin{aligned} W_{x(t)}(a, b) &= A_m e^{j(\alpha b + \theta)} \cdot \int_{-b/a}^0 \sqrt{a} \cdot e^{[\delta + j(a\omega - \omega_0)]k} \\ &\quad \cdot \left( -\frac{\delta^3}{3} k^3 - \frac{\delta^4}{6} k^4 - \frac{\delta^5}{15} k^5 \right) dk \\ &= A_m e^{j(\alpha b + \theta)} \cdot I(a, b) \end{aligned}$$

where

$$\begin{aligned} I(a, b) &= \sqrt{a} \cdot \left\{ \frac{-\delta^3}{3} \cdot \left[ -\frac{\left( \frac{-b}{a} \right)^3}{\eta_1} \cdot e^{\eta_1 \left( \frac{-b}{a} \right)} + \frac{3 \left( \frac{-b}{a} \right)^2}{\eta_1^2} \right. \right. \\ &\quad \cdot e^{\eta_1 \left( \frac{-b}{a} \right)} - \frac{6 \left( \frac{-b}{a} \right)}{\eta_1^3} \cdot e^{\eta_1 \left( \frac{-b}{a} \right)} - \frac{6}{\eta_1^4} \cdot (1 - e^{\eta_1 \left( \frac{-b}{a} \right)}) \left. \right] \\ &\quad - \frac{\delta^4}{6} \cdot \left[ -\frac{\left( \frac{-b}{a} \right)^4}{\eta_1} \cdot e^{\eta_1 \left( \frac{-b}{a} \right)} + \frac{4 \left( \frac{-b}{a} \right)^3}{\eta_1^2} \cdot e^{\eta_1 \left( \frac{-b}{a} \right)} \right. \\ &\quad \left. - \frac{12 \left( \frac{-b}{a} \right)^2}{\eta_1^3} \cdot e^{\eta_1 \left( \frac{-b}{a} \right)} + \frac{24 \left( \frac{-b}{a} \right)}{\eta_1^4} \cdot e^{\eta_1 \left( \frac{-b}{a} \right)} \right. \\ &\quad \left. + \frac{24}{\eta_1^5} \cdot (1 - e^{\eta_1 \left( \frac{-b}{a} \right)}) \right] - \frac{\delta^5}{15} \cdot \left[ -\frac{\left( \frac{-b}{a} \right)^5}{\eta_1} \cdot e^{\eta_1 \left( \frac{-b}{a} \right)} \right. \\ &\quad \left. + \frac{5 \left( \frac{-b}{a} \right)^4}{\eta_1^2} \cdot e^{\eta_1 \left( \frac{-b}{a} \right)} - \frac{20 \left( \frac{-b}{a} \right)^3}{\eta_1^3} \cdot e^{\eta_1 \left( \frac{-b}{a} \right)} \right. \\ &\quad \left. + \frac{60 \left( \frac{-b}{a} \right)^2}{\eta_1^4} \cdot e^{\eta_1 \left( \frac{-b}{a} \right)} - \frac{120 \left( \frac{-b}{a} \right)}{\eta_1^5} \cdot e^{\eta_1 \left( \frac{-b}{a} \right)} - \frac{120}{\eta_1^6} \cdot (1 - e^{\eta_1 \left( \frac{-b}{a} \right)}) \right] \left. \right\} \end{aligned}$$

Similarly as deriving the wavelet coefficient of signal  $x(t)$ , for signal  $y(t)$ , denote  $\eta_2 = \delta - a/\tau - j\omega_0$ , we have

$$W_{y(t)}(a, b) = a^{-1/2} \int_0^b y(t) \cdot \psi^* \left( \frac{t-b}{a} \right) dt$$

$$= I_\tau(a, b) \cdot D_\tau e^{-t/\tau} + W_{x(t)}(a, b)$$

where  $I_\tau(a, b)$  has the same with  $I(a, b)$  by replacing  $\eta_1$  with  $\eta_2$ .

## VII. REFERENCES

- [1] A. G. Phadke and J. S. Thorp, *Computer Relaying for Power Systems*. New York: John Wiley and Sons, 1988.
- [2] M. V. V. S. Yalla, "A Digital Multifunction Protective Relays," *IEEE Trans. On Power Delivery*, vol. 7, no. 1, pp. 193-201, 1992.
- [3] A. G. Phadke, T. Hlibka, M. Ibrahim, "A Digital Computer System for EHV Substation: Analysis and Field Tests," *IEEE Trans on Power Apparatus and Systems*, Vol. PAS-95, pp. 291-301, Jan. /Feb. 1976.
- [4] N. T. Stringer, "The Effect of DC Offset on Current-operated Relays," *IEEE Trans on Industry Applications*, vol. 34, no. 1, pp. 30-34, Jan/Feb 1998.
- [5] G. Benmouyal, "Removal of DC-offset in Current Waveforms Using Digital Mimic Filtering," *IEEE Trans on Power Delivery*, vol. 10, no. 2, pp. 621-630, April 1995.
- [6] Jyh-Cherng Gu, Sun-Li Yu, "Removal of DC Offset in Current and Voltage Signals Using a Novel Fourier Filter Algorithm," *IEEE Trans on Power Delivery*, vol. 15, no. 1, pp. 73-79, Jan. 2000.
- [7] Jun-Zhe Yang, Chih-Wen Liu, "Complete Elimination of DC Offset in Current Signal for Relaying Applications," in *Proc. 2000 IEEE Power Engineering Society Winter Meeting*, vol. 3, pp. 1933-1938, Jan 2000.
- [8] T. S. Sidhu, X. Zhang, F. Albasri, M. S. Sachdev, "Discrete-Fourier-Transform-Based Technique for Removal of Decaying DC Offset from Phasor Estimates," *IEE Proc. Generation, Transmission and Distribution*, vol. 150, no. 6, pp. 745-752, Nov. 2003.
- [9] Y. Guo, M. Kezunovic, "Simplified Algorithms for Removal of the Effect of Exponentially Decaying DC-Offset on the Fourier Algorithms," *IEEE Trans on Power Delivery*, vol. 18, no. 3, pp. 711-717, July 2003.
- [10] Chi-Shan Yu, "A Discrete Fourier Transform-Based Adaptive Mimic Phasor Estimator for Distance Relaying Applications," *IEEE Trans on Power Delivery*, vol. 21, no. 4, pp. 1836-1846, Oct. 2006.
- [11] O. Chaari, M. Meunier, F. Brouaye, "Wavelets: A New Tool For the Resonant Grounded Power Distribution Systems Relaying," *IEEE Trans on Power Delivery*, vol. 11, no. 3, pp. 1301-1308, July 1996.
- [12] Chuan-li Zhang, Yi-zhuang Huang, et al., "A New Approach to Detect Transformer Inrush Current by Applying Wavelet Transform," in *Proc. 1998 POWERCON*, vol. 2, pp. 1040-1044, Aug. 1998.
- [13] Xiang-ning Lin, Hai-feng Liu, "A Fast Recursive Wavelet Based Boundary Protection Scheme," in *Proc. 2005 IEEE Power Engineering Society General Meeting*, vol. 1, pp. 722-727, June 2005.
- [14] C. Zhang, Y. Huang, X. Ma, W. Lu, G. Wang, "A New Approach to Detect Transformer Inrush Current by Applying Wavelet Transform," in *Proc. 1998 POWERCON*, vol. 2, pp. 1040-1044, Aug. 1998.

## VIII. BIOGRAPHIES

**Jinfeng Ren** (S'07) received his B.S. degree from Xi'an Jiaotong University, Xi'an, China, in electrical engineering in 2004. He has been with Texas A&M University pursuing his Ph.D degree since Jan. 2007. His research interests are digital simulator and automated simulation method for protective relay and phasor measurement unit testing and applications in power system control and protection.

**Mladen Kezunovic** (S'77, M'80, SM'85, F'99) received the Dipl. Ing., M.S. and Ph.D. degrees in electrical engineering in 1974, 1977 and 1980, respectively. Currently, he is the Eugene E. Webb Professor and Site Director of Power Engineering Research Center (PSerc), an NSF I/UCRC at Texas A&M University. He worked for Westinghouse Electric Corp., Pittsburgh, PA, 1979-1980 and the Energoinvest Company, in Europe 1980-1986, and spent a sabbatical at EdF in Clamart 1999-2000. He was also a Visiting Professor at Washington State University, Pullman, 1986-1987 and The University of Hong Kong, fall of 2007. His main research interests are digital simulators and simulation methods for relay testing as well as application of intelligent methods to power system monitoring, control, and protection. Dr. Kezunovic is a Fellow of the IEEE, member of CIGRE and Registered Professional Engineer in Texas.