

# Directions and Parking Info

**Toms River Branch  
Ocean County Library**  
101 Washington Street  
Toms River, NJ 08753  
732-349-6200

## Library Hours

Monday - Thursday 9-9,  
Friday & Saturday 9-5,  
Sunday 1-5\*

\* Sunday Hours: September through May

## What does the library building look like?



View of the library from the front on Washington Street, day and evening.

## Parking Options

The Toms River Township Parking Deck is located directly behind the library on the corner of Water Street and Horner Street. This deck is not owned or operated by the library. You are welcome to park in this deck. Metered parking is in effect before 6 pm on weekdays. The library pays for free parking for all on the top level of the parking deck on Saturdays. On Sundays parking is free for all in Toms River everywhere.

The cost on the top level of the deck is 25 cents per hour (quarters only) and the parking limit is 3 hours. On the lower level, there is parking in the center aisle section only and it costs 50 cents per hour. The parking limit is up to 8 hours. The middle level of the parking deck is not for public use.

For those with handicapped plates or placards you can park on the top or bottom level in any space except for those that are labeled “RESERVED”. Weekend and weeknight parking after 6 pm is free. Everyone must pay to park however if you have a handicapped plate or placard and your time expires you will not receive a ticket.

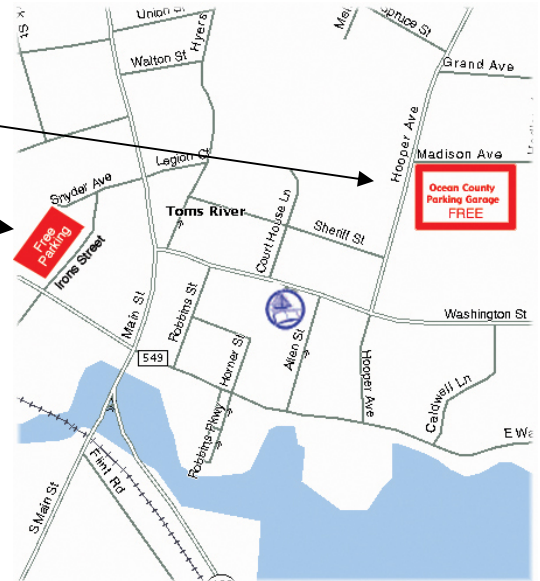
If you have any questions about the Toms River Township parking deck, feel free to contact the Toms River Township Parking Authority at 732-240-2800.

**FOR GUEST SPEAKERS:** For those who have been invited to speak or perform at a library function you may park in one of the spots directly behind the building labeled Commissioners/Guest Speakers if a spot is available and you have checked with your library staff contact first. Enter through the back door. You will see an “OCL Staff” sign on the door. Proceed through the back offices to the front check out desk (Circulation Desk). You may ask them to contact the staff person with whom you will be meeting.



## FREE PARKING

1. Ocean County Parking Garage, 7:00 am to 9:00 pm
2. Irons Street Lot, 3 hr limit



## DIRECTIONS: TOMS RIVER TOWNSHIP PARKING DECK

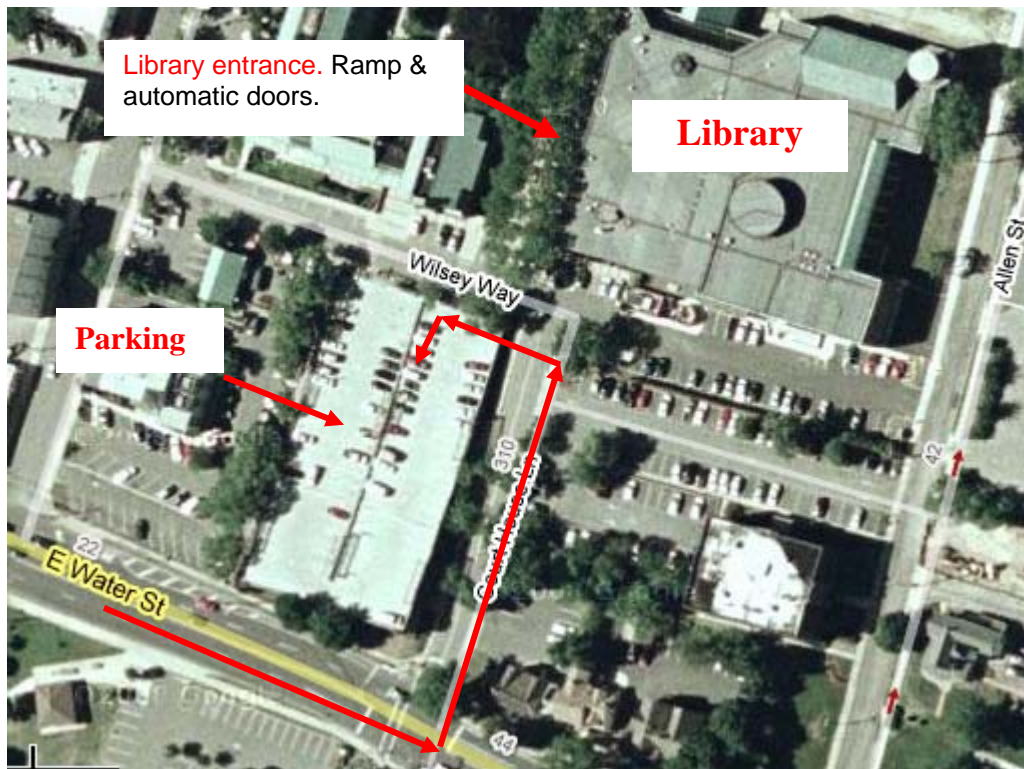
(Located behind the library)

If you are traveling south on **RT 9** (also called RT 166), make a left on **Washington Street**, then a right on **Robbins Street**, then make your first left on Wilsey, then make a right into the top level of the parking garage. If there is no room on the top level, travel to the bottom of the hill and make a right into the lower level. See Map below.



Library

If you are visiting the library via “Water Street”, make a right on Horner Street, (on the Map it’s named Court House Lane but the street sign reads Horner Street.) See map below.



## **DIRECTIONS:**

### **From the North:**

Garden State Parkway to exit 81. Bear right, back over the Parkway toward Toms River on Water Street. Continue on Water Street past the post office on the right and the 7-Eleven at the third light. For metered parking continue straight past the traffic light two short blocks to the multi-level parking garage on the left. The parking garage is located behind the library which is no more than four minutes from the Garden State Parkway exit. For **free** parking continue to the fourth light and turn left onto (Route 549) Hooper Avenue. Proceed through the next traffic light (intersection with Washington Street). Turn right into the first one-way entrance driveway (just past the County Administration Building at 101 Hooper Avenue). After "**stop**" sign, turn left to enter County parking garage. Parking is two blocks from the library.

### **From the South:**

Garden State Parkway North to exit 81. Continue straight off the exit heading east towards Toms River on Water Street past the post office on the right and the 7-Eleven at the second light. For metered parking continue straight past the traffic light two short blocks to the multi-

level parking garage on the left. The parking garage is located behind the library which is no more than three minutes from the Garden State Parkway exit. For **free** parking continue to the third light and turn left onto (Route 549) Hooper Avenue. Proceed through the next traffic light (inter-section with Washington Street). Turn right into the first one-way entrance drive-way (just past the County Administration Building at 101 Hooper Avenue). After "**stop**" sign, turn left to enter County Parking garage. Parking is two blocks from the library.

**From the Trenton Area:**

Take I-195 to Rt. 527 (Jackson exit #21.) Head south-east on Rt. 527 to Rt. 571 (approximately 13 miles of country roads.) Make a left onto Rt. 571 continuing a short distance to the traffic light at Rt. 9 (Rt. 166.) Make a right onto Rt. 9 (Rt. 166.) Go a short distance to Garden State Parkway Entrance South (Rt. 9.) Follow the Parkway to exit 81 and then follow the directions "From the North."

**From the Camden Area:**

Rt. 70 East to Rt. 37 East. After passing under the Garden State Parkway, take the first right onto Main Street (Rt. 166) at the traffic light. The Toms River Shopping Center is on the right at the corner and the Dover Mall is on the left corner. Once on Main Street, continue past the first light, Wachovia Bank will be on your right. At the second light, make a left onto Water Street. For metered parking take the second left to the multi-level parking garage. The multi-level parking garage is located behind the library. For **free** parking continue to next traffic light and turn left onto (Route 549) Hooper Avenue. Proceed through the next traffic light (intersection with Washington Street). Turn right into the first one-way entrance driveway (just past the County Administration Building at 101 Hooper Avenue). After the "**stop**" sign, turn left to enter County parking garage. Parking is two blocks from the library.

**From the New Brunswick Area:**

Rt. 18 to Rt. 9 South. Proceed on Rt. 9 South to Garden State Parkway entrance (Rt. 9) approximately 30 miles from Rt. 18. Continue on the Parkway a short distance to exit 81. Then follow the direction "From the North."