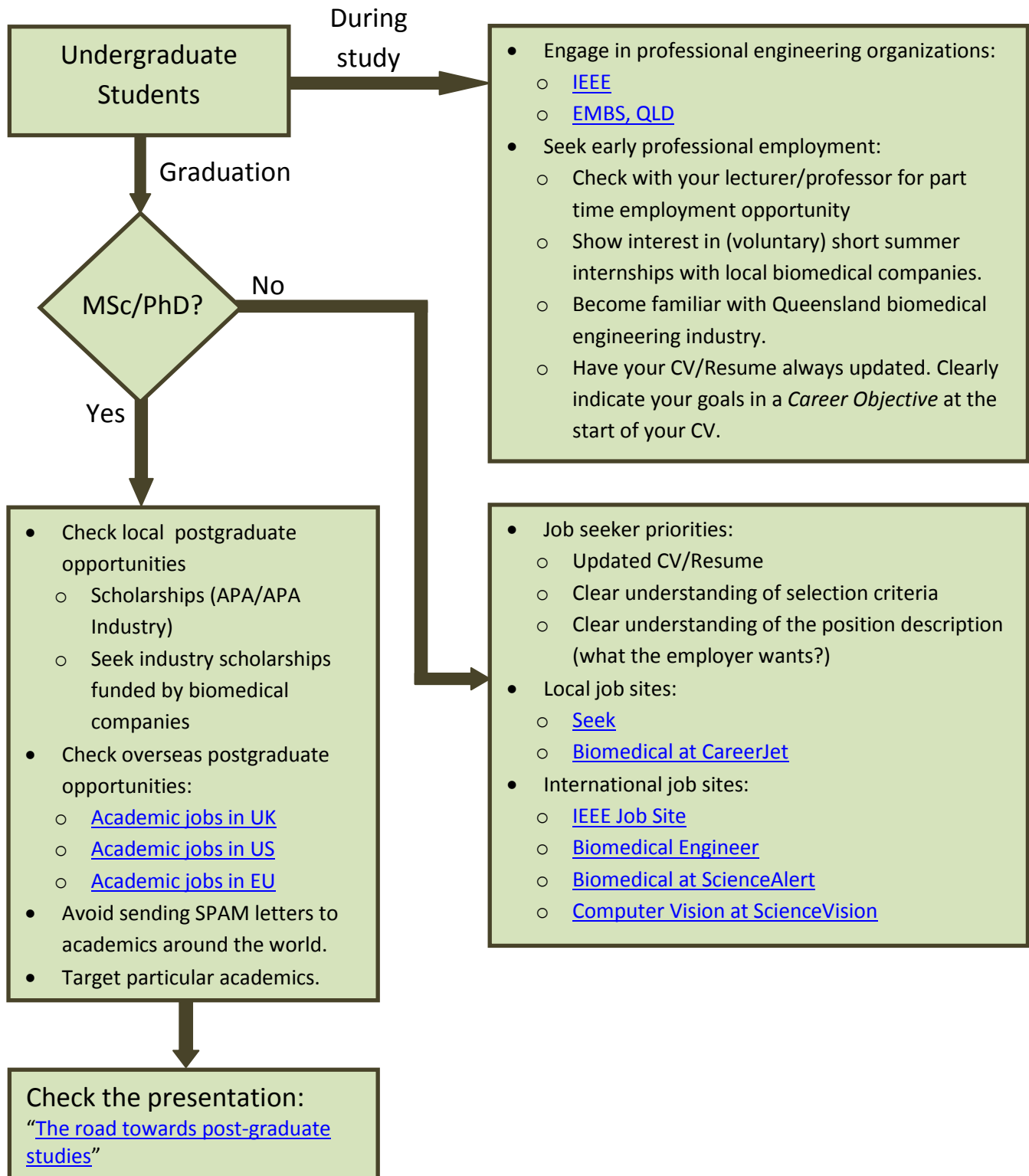


This page provides career and employment information for undergraduate and postgraduate students and early career Queensland engineers involved in biomedical applications. The IEEE provides comprehensive general [resources](#) that are available for its members. They include, among many, a Career Asset Manager and Navigator, Careers Webinars, Employment Strategies, and the [IEEE Job Site](#). Most of these resources, however, are tailored to the professional engineers and the US market.

In the following, a career resources pathway is drawn that focuses on early biomedical engineering career.



Some notes for the students

It is important to join professional organisation such as the IEEE, Engineers Australia, and our local IEEE EMBS chapter, as early as possible. These organisations provide an excellent forum to engage in engineering community activities, opportunities to attend seminars and workshops, and a platform to learn about local biomedical industries.

Students are encouraged to show curiosity and willingness towards working on simple engineering tasks. Early employment opportunities often exist at universities. They include small research projects, writing specific software, and basic data collection and analysis. This form of employment provides some taste of what research is all about. Volunteering for a summer internship in a local biomedical company is also a good way to establish networks with industry.

Often the CV/Resume is the first point of contact. Hence, plenty of care should be given to its form and appropriateness for the particular sought position. There are numerous sites with recourses on how to write a CV. It is important to view several dozens of examples and developed an individual form that suits the person and particular job application. Consider having an *executive summary* (up to half of the first page) which gives the employer the chance to get a quick overview without going into details. It is a good idea to regularly update the CV even in the no-job-hunting seasons.