

Region 3



<http://ewh.ieee.org/reg/3>

Volume 25 – No. 1

January 2010

Message to Region 3 ...



Lee Stogner
Director, Region 3

Dear Region 3,

I have been a Member and a Volunteer for the IEEE for over 35 years. Over those years, my career has grown and changed and changed again. Through all of this change, the IEEE Network of professional associates and life long friends have been an ongoing source of support. This support has enabled me to learn about new technology, gain experience with soft skills and has provided employment assistance contacts. My ongoing investment in dues and volunteer time has been paid back many, many times over.

I would like to ask for your help in building a better IEEE in Region 3. This will be an IEEE in which the Members are truly united in the Network of people, skills and shared communications. This Network of IEEE professionals would start during the early years of technical training and extend into retirement. There are other professional institutions that have already built strong Networks for their Members. Those Members benefit every day from the strength of their Network. If we can work together, our organization could be just as strong as any medical or legal group. I'm sure you've seen the local and national benefits their Members enjoy just because they are able to work together as a group.

We have all of the tools and technology required to build a Network that will extend down to every single Region 3 Member. In fact, we Electrical Engineers invented the technology that other organizations

(continued on page 2)

Inside this issue of the Region 3 Newsletter

Page 2	<i>Our Contributions</i>	Page 11	<i>Ratcliff's Ramblings (Final installment as Director Region 3 but not the last)</i>
Page 3	<i>Who is Who in the Zoo?</i>	Page 11	<i>Region 3 IEEE S-PAC Information</i>
Page 4	<i>S-PAC Memphis</i>	Page 12	<i>Be a Volunteer</i>
Page 5	<i>IEEE Hampton Roads and Cooperating Hampton Roads Organization for Minorities in Engineering</i>	Page 15	<i>IEEE Region 3 Executive Committee 2010</i>
Page 6	<i>eMeribadges Launches Updated Website</i>	Page 16	<i>IEEE Professional Development Seminar</i>
Page 6	<i>SoutheastCon—A time for Celebration</i>	Page 16	<i>How are we doing?</i>
Page 8-9	<i>SoutheastCon 2010</i>		

Dear Region 3... (cont.)

use to protect their Members and project their influence throughout society. It's time that we do it for ourselves. If we don't build a bigger, stronger IEEE Network, then others will continue to think of us as variable resources and not fully vested members of their organization.

You can build the better IEEE Network by participating in local and national activities. Go to Section / Chapter meetings and learn ideas that you can use the next day at work. Meet fellow Engineers at those meetings that can help you find your next job or employee. You can also build the influence of the IEEE by volunteering to help in the name of the IEEE. Finally you can help by letting your local Congressional Representative know how what they do impacts Engineering and Science. Just think of what we could do if one morning, Congress received letters, phone calls and visits from the more than 235,000 IEEE Members in the United States. Why, we might be able to make a difference in the world.

I need your help to make this difference in Region 3. It won't require a big budget increase. All we have to do is participate in our organization and work together towards a better IEEE.

Thank you for your support,

Lee Stogner
Director, Region 3
l.stogner@ieee.org

Our Contributions

David Green [d.green@ieee.org]
Director-Elect, Region 3



Thank you for choosing me as the next Region 3 Director-Elect. I will endeavor to act worthy of your support as we work together to improve IEEE to better fulfill our needs as members, as part of the professional community and as a profession organization serving the profession and the common good. IEEE's core values and envisioned future is published at http://www.ieee.org/web/aboutus/strategy/envisioned_future.html. This is not a task for IEEE staff and a few volunteers -- lots of help is needed.

IEEE provides many services to its members. In fact, surveys often find that a major problem is making members aware of all the products and services that are available. A recent effort to list these is at <http://www.ieee.org/web/membership/benefits>. This list attempts to elaborate what IEEE provides its members. Of course, IEEE's members make many contributions to IEEE and its mission.

Naturally, each of us contributes in different ways to the mission of IEEE, a few of these contributions are:

- Working in increasing the knowledge or application of a specific technology
- Working to bring local members together for networking, education and other purposes
- Helping in the schools to promote science and technology
- Assisting in making governmental leaders aware of technical policy issues
- Assisting in humanitarian efforts

(continued on next page)

This Region 3 Newsletter is sent to the members of Region 3. The information herein may be used in section and chapter newsletters. The opinions expressed, as well as the technical accuracy of authors, advertisers, or speakers published in this newsletter are those of the individual authors, advertisers, and speakers. Therefore, no endorsement by the IEEE, its officers, or its members is made or implied.

Editor – William LaBelle
6224 Glenrose Drive, Suffolk, VA 23435
Voice: (757) 619-9050
E-MAIL: w.labelle@ieee.org
Copyright 2010

Our Contributions (cont.)

- Mentoring a colleague in career development
- Promoting science and technology activities outside of the classroom
- Providing peer review for colleagues
- Providing support for a networking event
- Supporting a colleague doing one of the above

One of the challenges in IEEE is for each of us to respect and appreciate the contributions of our peers understanding that while the focus of the contribution may differ from our personal one, each of these is important and supportive of the IEEE mission.

How would you like to contribute? Is IEEE providing the right services and interface to you so that you consider it your professional home? Are you able to make the contributions you wish to through IEEE?

I look forward to talking and working with you these next years as we pursue the IEEE mission.

Who is Who in the Zoo?

Bill Clayton [w.clayton@ieee.org]
Region 3 Communications Chair

What is Region 3? Where do I fit into the IEEE? First understand that your dues notice does not come from the National Headquarters.

IEEE is an international non-profit corporation incorporated in New York City. The Operations Center is in Piscataway, New Jersey. Hence, you will hear headquarters called Piscataway.

Most of the people who run IEEE are volunteers, just like you and me. The professional staff is primarily found in Piscataway. Hopefully most of you know IEEE from meetings and conferences. These are run by some of the 375,000 members that make the IEEE the largest technical professional society in the world. Gen-

erally meetings are held either by the Section or Chapter, or their student equivalents.

Sections are geographic entities that are supported by Regions, Areas, and Councils. The world is divided by IEEE into ten geographic regions. Regions 1-6 represent the United States. Region 3 represents the Southeastern United States and Jamaica.

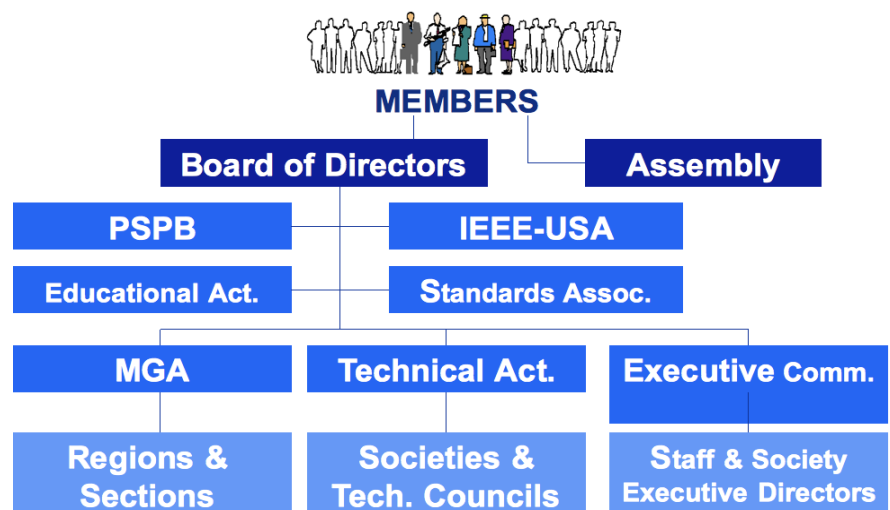
Within Region 3, we have nine geographic Areas to help the Region Director support one or more states.

Some Areas have incorporated as Councils providing an additional layer of support.

The rubber meets the road at the section level. Our Region is split into 41 sections. Some sections have chosen to create subsections to support geographically distributed populations. Student Branches are supported by the local section. You are automatically a member of a section. Assignment is based on your preferred mailing address. If you update your member profile, the local section will automatically invite you to meetings and support your membership needs.

Conferences are generally held by Technical Societies. Your Technical Society may also have a local organization called a Chapter. You are automatically a member of a Chapter if you are member of its

IEEE Organization



technical society. Chapters are also supported by their local Section. Depending on how your fellow members engage with the IEEE, you may actually have more Chapter meetings than Section meetings.

Each of these volunteer organizations is run by elected leadership. Normally there is a Chair (not President) and other leaders such as a Vice-Chair, Treasurer, and Secretary. These leaders along with appointed committee chairs for a council generally called the Executive Committee. The Executive Committee is also known as the ExCom. At the Region level, the ExCom is led by the Director and the Director-Elect. Region also has a slightly larger assembly called the Region 3 Committee that includes the Region 3 ExCom and all your Section Chairs. This brings us to our last vocabulary lesson.

Remember that I said that generally technical societies hold conferences. One important exception in our region is SoutheastCon. This annual gathering is sponsored by a local section and Region 3. It includes three conferences for the price of one. There is a student conference, professional conference, and a Region 3 Committee meeting.

Hopefully this explains who we are and what we are talking about in this newsletter. If you still have questions, feel free to contact your local leadership or any of the ExCom members listed in this newsletter.



Host: Russel Saliendra
Type: Meetings - Convention
Network: Global
Date: Friday, February 12, 2010
Time: 4:30pm - 9:30pm
Location: Memphis Botanic Gardens

This event is planned to start at 4:30 pm on Feb 12, 2010 at Memphis Botanic Gardens

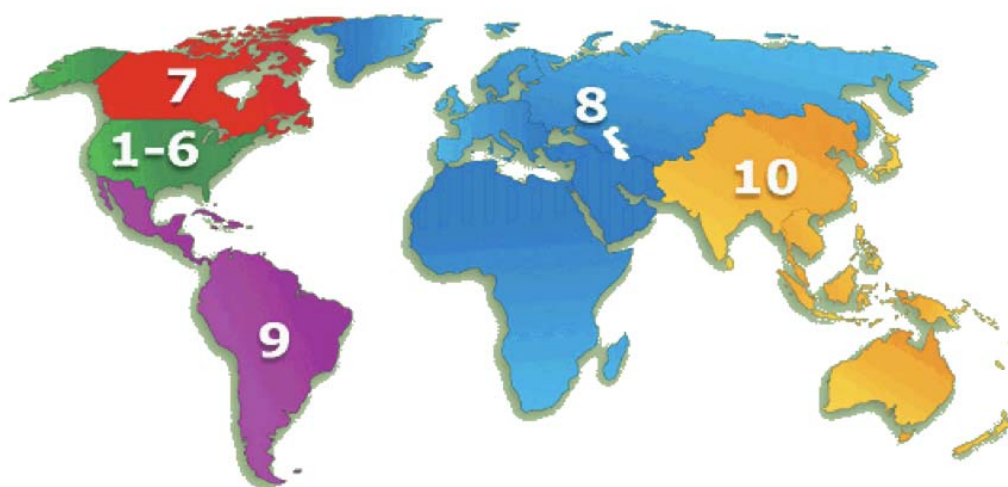
The Institute of Electrical and Electronic Engineers (IEEE) established the S-PAC as a career growth and professional awareness conference that focuses on bringing both the students and professional worlds together for a networking event and seminar on engineering related topics. This year the Memphis Section of IEEE has organized a variety of engineering societies from Arkansas State University, Christian Brothers University, The University of Memphis, The University of Tennessee at Martin, The University of Mississippi, and Union University to participate in the S-PAC.

Approximately 100 electrical, computer, mechanical, chemical, biomedical, and civil engineering students from these six universities will participate in the conference. The IEEE will provide two nationally distinguished speakers who will give presentations on Career Growth

and Self-Management. Students who participate in the conference will provide resumes, which will be bound and given to all Gold and Diamond event sponsors.

Why Participate?

Students: This is your opportunity to learn, network, and develop as young engineers.



(continued on next page)

Learn about Career Growth and Self-Management to help you make the right choices about your next move in life. Network with professionals and peers. Your future boss could be one of our sponsors or one of your peers from another school! When you register you can upload your résumé to the S-PAC website, which will be given to all Gold and Diamond sponsors! Most importantly, this is an opportunity for you to develop as an individual and expand your knowledge of the engineering community and profession as a whole.

Professionals: As a college student did you think about graduate school or the corporate world? Did you think, "Where should I apply for a job? Will I be happy doing this ten years down the road? What kind of salary should I expect?" WELL, students are still asking the same questions. This is an opportunity for you as a professional engineer to give back to the engineers of tomorrow by attending this conference and sharing your knowledge and expertise.

Sponsors: 100 students! 6 universities! All in one place! Instead of driving all over the region looking for engineers to hire, simply spend one evening enjoying a delectable dinner and mingle with students in a casual environment. Moreover, if you are a Gold or Diamond sponsor we will give you all of their resumes to take back with you!

- Cost for attendance: Students \$10, Professionals \$30
- Sponsorship levels: Diamond \$500, Gold \$250, Silver \$100
- Tax deductible donations of any size accepted!

For more information, visit the S-PAC 2010 website at <http://spac.ieeememphis.org> or the IEEE Student Branch at CBU website at ieeecbu.org.

IEEE Hampton Roads and the Cooperating Hampton Roads Organization for Minorities in Engineering

Dawn Ostemberg [dawn.ostenberg@ieee.org]
Hampton Roads Education Committee

The Hampton Roads Section, Institute of Electrical and Electronics Engineers (IEEE), and the Cooperating Hampton Roads Organizations for Minorities in Engineering (CHROME), announce a new collaborative program to bring together practicing engineers and students in the 4th through 12th grades, encouraging minority and female students especially to explore their interests and skills in electrical and electronics engineering disciplines. In this new collaborative program, coordinated by the IEEE section Education Committee and CHROME leaders, volunteer engineers will entertain and enrich students attending CHROME club meetings at schools throughout the Hampton Roads area. Volunteer presentations will include personal introductions to the practice of electrical and electronics engineering, but focus largely on age-appropriate hands-on student experience building practical electronics circuits using commercially available electronic learning kits.

The effort has evolved following the success of one volunteer engineer's efforts visiting various CHROME clubs with popular off the shelf learning kits purchased and made available through grants from local industry and universities. Additional fund raising is planned to purchase more kits with the intention of expanding the program. It is hoped that the program can be a model program for other professional engineering societies to bring together their practicing engineers and CHROME students to help stimulate interest in a variety of technical careers among minority and female students in the Hampton Roads area.

For further information or to volunteer, contact Education Committee Chair Dawn Ostemberg at IEEE dawn.ostenberg@ieee.org. For more information about CHROME go to www.chrome.org.

IEEE emeritbadges.org Launches Updated Web Site

Ralph W. Russell, II
Chair, IEEE Scouting Program
[\[emeritbadges@ieee.org\]](mailto:emeritbadges@ieee.org)

The IEEE emeritbadges.org project has updated its web site, <http://www.emeritbadges.org>, featuring hands-on, pre-college technology educational materials for boys and girls. The updated site will feature information on the program's sponsorship of the Electricity and Electronics Merit Badge booths at the 2010 National Scout Jamboree, to be held from 26 July to 4 August, 2010, at Fort A.P. Hill, in Caroline County, Virginia.

Would you please include a link to <http://www.emeritbadges.org> on your groups website? This will help to globalize our project.



Electronic



Computer



Electricity

SoutheastCon “A Time for Celebration”

David Bower
Region 3 Public Information Officer
[\[d.bower@ieee.org\]](mailto:d.bower@ieee.org)

Each year, members have the opportunity to attend an outstanding conference to celebrate accomplishments within Region 3 and learn more about important developments within IEEE and the engineering profession. It's also a time for renewal of existing friendships and the opportunity to meet new people. While engineering is the basis for our profession, it's really about the individuals who sustain it and make advancements for the future. And, too, it's about giving back to the profession for our career in engineering. Youth is a vital component and SoutheastCon each year sponsors ac-

tivities to highlight student creativity and accomplishment.

Let's look back, through picture and brief narrative, at SoutheastCon 2009 to get a glimpse of what it's like to attend such an event. It all starts with arrival at the convention hotel and registration, followed by a Friday evening dinner and social event. Engineering professionals are really gregarious by nature and enjoy socializing with others. Also, it's during this time that they network and exchange ideas useful for their careers. And, what's great, is the mixture of students and graduate engineers intermingling together to support the profession. Friday evening is when the various Councils and Areas within Region 3 meet and become better acquainted and discuss important matters about Section activities. Saturday is the time for important meetings to learn more about the region and where we're going. Various breakout sessions allow the participants to focus on specific facets that can be very useful for their career. Some are related to career advancement and learning more about new technologies and management techniques. Some focus on younger engineers just entering (or about to enter) the profession. Others are centered on training for leadership and membership development. It's an opportunity to learn from our leaders at the regional and national level about the vital support services IEEE provides. Important information regarding IEEE benefits for the membership is presented, including resources available for retirees. Scheduled student competitive events are very popular as evidenced by the large number of attendees. Saturday evening is highlighted with a banquet and awards ceremony. Various awards are presented to the members, students and others for their accomplishments. Finally, Sunday morning is reserved for members within the region to meet as a collective group and discuss matters regarding the event. Most importantly, perhaps, it's an opportunity to discuss and plan the goals and objectives for the coming year as we move forward.

Each SoutheastCon, while very informative and important, is unique and sure to reward those who attend. Please mark your calendar for SoutheastCon 2010 the third weekend in March to be held in Charlotte, North Carolina. The official SoutheastCon 2010 Web Page at

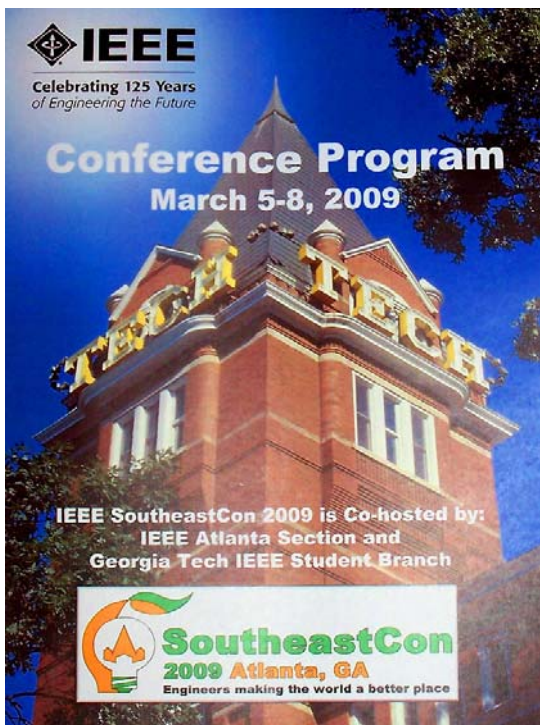
(continued on next page)

SoutheastCon

www.southeastcon2010.org has more details including conference registration and information regarding hotel reservations.



Attendees are greeted and prepare to register



The Friday dinner and social event included music by a band

The program for SoutheastCon 2009,



One of the Council/Area meetings Friday night



The attendees at the Region 3 meeting

One of the many breakout sessions



Bill Ratcliff speaks at a Region 3 meeting

(continued on page 10)



IEEE SoutheastCon 2010

"Energizing
Our
Future"

March 18-21, 2010, Embassy Suites Concord (Charlotte), NC

JOIN US in Concord, NC, right off of I-85 (exit 49) and next door to Lowes Motor Speedway, to 'rev up' your career and find yourself in the winners circle!

IEEE SoutheastCon is an annual IEEE Region 3 Technical, Professional, and Student Conference. It is the premier conference for the IEEE Region that encompasses the IEEE Southeastern United States and Jamaica. IEEE SoutheastCon 2010 brings Electrical Engineering, Computer Engineering, and Computer Science professionals, faculty and students to share the latest information through technical sessions, tutorials, professional development sessions, and exhibits. ***It is the most influential conference in Region 3 for promoting awareness of the technical contributions*** made by our profession to the advancement of engineering science and to the community.

This year the theme is "IEEE SoutheastCon2010: Energizing Our Future" and will highlight the Charlotte area's leadership in energy production and infrastructure. Featured during the conference are the following activities:

- Energy, technology, and professional development 2- and 4-hour tutorials: Thursday, 3/18
- Tour of UNC Charlotte's energy research facilities and dinner reception: Thursday, 3/18
- Energy, technology, and professional development free 50-minute tutorials: Friday, 3/19 and Saturday, 3/20
- Technical papers on energy, electrical and computer technology, and software: Friday, 3/19 and Saturday, 3/20.
- Student conference with competitions and student professional development: Friday, 3/19 and Saturday, 3/20.
- IEEE Region 3 business meetings: Friday, 3/19 through Sunday, 3/21.

Be sure to check the website for more information. ***Space is limited*** for some events, so we strongly encourage you to take advantage of early registration to make sure you will be able to participate in your chosen events.

Attendance and technical program participation from areas outside IEEE Region 3 is welcomed and encouraged. You do not have to be a member of IEEE to participate or attend IEEE SoutheastCon 2010, although membership is required in order to participate in student competitions. ***However, we do encourage you to investigate the benefits of IEEE membership.*** One immediate benefit is the reduced registration fee to attend.

For more information, please see our website at <http://www.southeastcon2010.org/>



IEEE SoutheastCon 2010

IEEE SoutheastCon 2010: Energizing Our Future

March 18-21, 2010, Embassy Suites, Charlotte-Concord, NC

ADVANCE REGISTRATION FORM

**** Please Register on-line at www.regonline.com/sec10 if possible – Thanks! ****

Each conference attendee must submit a separate registration form. A copy of this form may be used.
To ensure advance registration, this form and payment must be received on or before **February 22, 2010**

Name _____
Last First Guest's name (if attending)

Company/University: _____ Badge Name: _____

Street Address: _____

City, State, Zip Code: _____

Country: _____ Telephone: _____ Fax: _____

E-mail Address: _____

• Check all appropriate boxes: IEEE Member à Membership # _____

• Student Region 3 Committee Life Member

**** PLEASE NOTE *** Authors must register online per instructions included in the paper acceptance email
Students are encouraged to follow student team registration procedures – see website for details**

<u>IEEE Member:</u>	<input type="checkbox"/>	<u>Advance</u>	<u>On-Site</u>	<u>Subtotal</u>	<u>Non-IEEE Members:</u>	<input type="checkbox"/>	<u>Advance</u>	<u>On-Site</u>	<u>Subtotal</u>
Conference	<input type="checkbox"/>	\$150	\$200	_____	Conference	<input type="checkbox"/>	\$200	\$250	_____
Tutorials (<i>half day</i>)	<input type="checkbox"/>	\$150(ea)	\$200	_____	Tutorials (<i>half day</i>)	<input type="checkbox"/>	\$250(ea)	\$300	_____
Tutorials (both <i>days</i>)	<input type="checkbox"/>	\$500	\$600	_____	Tutorials (both <i>days</i>)	<input type="checkbox"/>	\$600	\$750	_____
<u>Student/Life Member Registration:</u>					<u>Additional Tickets:</u>				
Conference	<input type="checkbox"/>	\$50	\$100	_____	Guest Fee	<input type="checkbox"/>	\$75	\$125	_____
Non-mem Student	<input type="checkbox"/>	\$100	\$150	_____	<u>Region-3 Committee:</u> <input type="checkbox"/> \$150 \$200 _____				

Guest Fee includes Friday reception and Saturday banquet

TOTAL AMOUNT \$ _____

No refunds available after February 22, 2010. There will be a \$25 fee for each returned/NSF check.
Please check the web site for the latest information on the Tutorials.

Make all checks payable to IEEE SoutheastCon 2010. All fees payable in \$U.S.

Credit Card (Please Check one): MasterCard VISA American Express

• Credit Card Number _____ Expiration Date _____

Cardholder's Signature _____ Signature Date _____

Send to: SoutheastCon 2010

c/o Charles Lord, 108 Huntington Circle, Cary, NC 27513.

Email: c.j.lord@ieee.org Fax: (919) 319-1707

IEEE SoutheastCon 2010: Online Registration: <http://www.regonline.com/sec10>

Hotel: Embassy Suites Concord, Charlotte-Concord, NC

Reservations:

<http://embassysuites.hilton.com/en/es/groups/personalized/CLTCCES-IEE-20100317/index.jhtml>

SoutheastCon (cont.)

The student hardware competition attracted a large crowd



The Saturday dinner, followed by the Awards Ceremony



Awards were presented to recognize accomplishments



One of the many student awards

Ratcliff's Ramblings (First installment as Past-Director Region 3 but not the last)

Most, if not all, of the Ratcliff's Ramblings over the last 5-10 years were driven by the following values and mutations thereof:

- Focus on the member as a person (not just a revenue stream)
- Think Strategically - Act Operationally
- Look for the "root cause" in developing solutions
- Use Engineering Principles to solve problems and guide action
- Promote a collaborative work environment

During our journey over the last 2 years, these principles guided the transformation to Member and Geographic Activities (MGA) and the changes in Region 3. The volunteers of the Region 3 Committees and some of the sections are working toward the new focus of engagement. So, you are probably asking yourself what does all of this have to do with me?

If you are interested in optimizing your membership in IEEE then the work that has been accomplished within Region 3, Member and Geographic Activities and the Board of Directors will help you:

- identify those areas of the profession that are of most interest to your career
- in your growth and development technically and professionally
- to engage other technical professionals in developing working relationships
- find your "professional home" in IEEE.

IEEE as you well know is a big place with many spaces that store useful information, advance technology and help solve many of the problems that mankind faces today. Your contribution will help form the many faces of IEEE because it will contain your face.

It is not easy to get your arms or imagination around the entire Institute. I have been involved in IEEE for 35 years at various places, positions and most recently as a member of the IEEE Board of Directors and still do not have a complete understanding of all aspects of IEEE. IEEE is a journey not a

destination.

- It is a journey of learning, experiencing, experimenting and growing. It is a journey made with other people with similar fields of interest, goals, drives and, yes, diverse backgrounds, experiences and perspectives.
- It is a journey in an organization that is dynamic and changing to meet the demands of the world in which we live.
- It is a journey to advance technology for the benefit of mankind.
- It is a journey that requires effort, active participation. It is not a spectator sport.

If I can help you optimize your journey in IEEE just holler!



Past Director, Region 3
w.ratcliff@ieee.org

Region 3 IEEE S-PAC Information

Planning to sponsor a S-PAC event? Would like more information on holding one? Please contact Region 3 S-PAC Coordinator James Howard [j.howard@ieee.org], Student Activities Chair Eric Ackerman Ph.D. [e.ackerman@ieee.org], Student Activities Co-chair Paul Donohoe Ph.D. [j.donohoe@ieee.org], or Student Representative Matthew Erickson [matterickson@ieee.org].



Be a Volunteer

David Bower

Region 3 Public Information Officer

[\[d.bower@ieee.org\]](mailto:d.bower@ieee.org)

Volunteers are the backbone for IEEE and its continuing development. They are paramount for promoting and sustaining activities within the organization. The beauty of it is that each member can be a volunteer in their own way. Some decide to do it at the Section level. Others prefer to participate and support Council or Area activities. While some steer toward Region 3 involvement, and beyond. And some branch out to include all of these as a volunteer. In any case, volunteering is a contribution we can all provide within the region. Certainly, we all have obligations to our job, family and other facets of our life. Given time constraints, some may only be able to participate on a limited basis. Others have more time. Each member, no matter how limited their available time, can play an important role as a volunteer. But the total collective effort of many members working together as volunteers can be substantial. Let's look at a few ways an individual can serve IEEE. Some may do so as an officer or member of a committee while others may volunteer by judging at a science fair, speaking to a youth group at a school, promoting IEEE through print and broadcast media, presenting a program at a section or society meeting, encouraging other engineers within our profession to join IEEE, writing articles for newsletters or other IEEE publications, and the list goes on. Please give it some serious thought--and pick an area that you'd like to participate in. If something does not immediately come to mind, feel free to ask others within our organization for ideas. Your service as a volunteer is vital and the satisfaction you'll receive as an individual will be rewarding. In



Present a program at a section or society meeting.

so doing, you will be supporting the largest professional engineering-technical organization in the world.

Maybe some of the pictures with this article will give you some ideas; perhaps discussion with others will get you interested in volunteering in some component of IEEE. If you are already a volunteer, you're aware of the importance of your service to IEEE. And please, encourage others within our organization to become volunteers. Thank you.



Nominate a section member for a Region 3 award.

(continued on next page)



Serve as a volunteer judge at a science fair.



Volunteer to help a youngster build an electronic project.



Plan a dinner prior to a section or society meeting, and be sure to include student members.



Participate in Council or Area meetings.

Discover the benefits of IEEE membership.
Join IEEE today at:
www.ieee.org/join



Promote others to join IEEE by handing out business cards.



Serve as a volunteer at events such as SoutheastCon.

IEEE Region 3 Executive Committee – 2010

Director <i>Lee Stogner</i>	Director Elect <i>David G. Green</i>	Secretary <i>Gregg L. Vaughn, Ph.D., P.E.</i>
Treasurer <i>Donald W. Hill</i>	Past Director <i>William Ratcliff</i>	
Area 1 Virginia Council <i>William Clayton</i>	Area 2 North Carolina Council <i>James Corr</i>	Area 3 Georgia <i>Curtis Lee</i>
Area 4 Florida Council <i>Quang Tang</i>	Area 5 Tennessee Council <i>Tim Bigelow</i>	Area 6 Alabama/Mississippi <i>Ron Ogan</i>
Area 7 South Carolina Council <i>Richard Baker</i>	Area 8 Kentucky & Indiana <i>Jerry W. Goerz</i>	Area 9 Jamaica <i>Wilfred A. (Robbie) Roberts</i>
<u>Standing Committees</u>		
Audit <i>Dale Caston</i>	Awards & Recognition <i>Dev Palmer</i>	Communications <i>Bill Clayton</i>
Conference <i>Sean Haynes</i>	Educational Activities <i>Bruce Walcott</i>	Finance Committee (FINCOM) <i>Don Hill</i>
Membership Development and Life Cycle Management (MDLC) <i>John Montague</i>	Nominations & Appointments <i>William Ratcliff</i>	Professional Activities <i>Susan Ronning</i>
Strategic Planning <i>Richard (Dick) Riddle</i>	Student Activities, Chair (2010) <i>Eric Ackerman, Ph. D.</i>	Student Activities, Chair (2011) <i>Regina Hannemann</i>
<u>Communications Subcommittees</u>		
Webmaster <i>Eric S. Ackerman, Ph.D.</i>	Newsletter Editor <i>William LaBelle</i>	Public Information <i>David L. Bower</i>
<u>Conferences</u>		
Southcon Representative (senior) <i>James H. Beall</i>	Southcon Representative (junior) <i>James M. Howard</i>	Sections Congress <i>Jim Howard, Sean Haynes</i>
SoutheastCon2009 <i>Amy Wilson, Bill Marshall</i>	SoutheastCon2010 <i>James Conrad</i>	SoutheastCon2011 <i>Saleh Zein-Sabatto</i>
SoutheastCon2012 <i>George McClure</i>		
<u>Leadership Development and Regional Support</u>		
Archive Management <i>Charles Lord</i>	Membership Recruiting and Recovery <i>Jim Anderson</i>	
<u>Professional Activities Subcommittees</u>		
S-PAC Region 3 Coordinator <i>James M. Howard</i>	Employment & Career Assistance Committee Representative <i>Ed Kirchner</i>	Pre-College Committee Representative <i>Ralph Russell</i>
<u>Strategic Planning</u>		
Special Review <i>Roy Harris</i>	<u>Student Activities</u> Student Representative <i>Matt Erickson</i>	

To contact any of the above members, please go to this website
<http://www.ewh.ieee.org/reg/3/comp.html>

IEEE Professional Development Seminar: Managing Your Career in Challenging Times

Mary Ellen Randall [merandall@ieee.org]

An IEEE Professional Development Seminar on Managing Your Career in Challenging Times will be held in Charlotte/Concord, NC on March 18-19, 2010 at the Embassy Suites, Concord, NC. The seminar will begin Thursday evening with a dynamic evening of facilitated networking with professionals and students, alike.

Friday's agenda includes:

- Negotiating for a Better Job,
- A glimpse into the future of health care informatics and smart grid technologies,
- lunch and dessert with the experts,
- An entrepreneur's journey,
- Large company, small company - which is for you?
- Innovation, entrepreneurship, education, and policy - how do they influence each other and why should you care?
- Alternative Science Careers, a panel discussion.

The day will conclude with a reception for all PDS participants and SoutheastCon participants. SoutheastCon 2010 will be running from March 18-21. Participants who sign up for the PDS may also attend SoutheastCon for free. Likewise, SoutheastCon participants may attend the PDS for free.

Price is \$150/participant for IEEE members and includes meals. Non-members are also invited. To register, visit <http://www.southeastcon2010.org/>. PDS is sponsored by IEEE Eastern NC section and IEEE Women In Engineering.

How are we doing?

Bill Clayton [w.clayton@ieee.org]
Region 3 Communications Chair

Please let us know what you think about the newsletter by taking our online survey at <http://tinyurl.com/ygm8f3h>.

We have upgraded our survey system so there will be no repeat of last year's survey problems. If you have questions or comments on the survey, please contact w.clayton@ieee.org.

This survey was done using Google Documents. These tools are free. You may want to use them to poll your members about matters affecting your Section or Chapter. If you have questions or problems, let us know by contacting Bill Clayton, w.clayton@ieee.org, or any of the Communications Committee members.