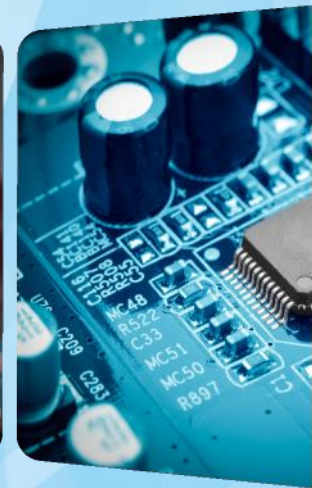
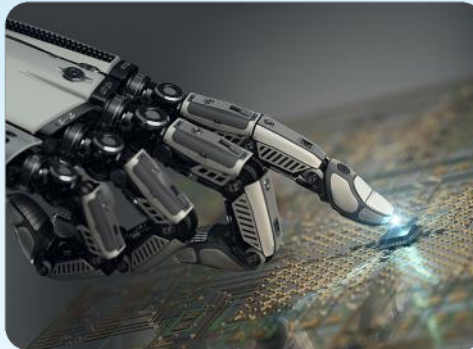


Region 3 Students

5/17/2021



Update On Focus Branches

List of branches SAC is focusing on first to reach out to for SouthEastCon 2022

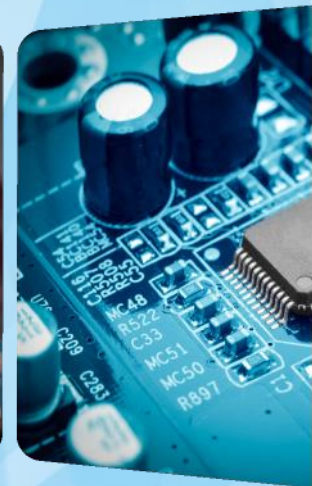
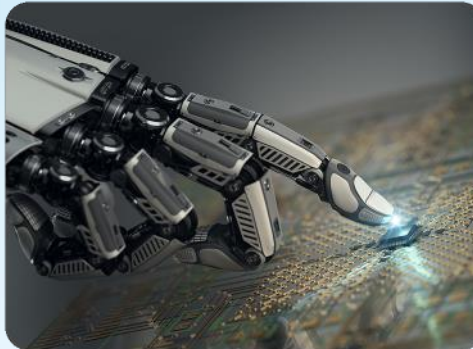
Strategy

Determining which branches to focus on first

- ▶ Create priority groups and SAC would follow the group order for the branches to focus on:
 - Group A
 - Student branches that had won the hardware competition between 1981-2021* (28)
 - Student branches that were register to attend in 2020 and 2021 and not past winners (14)
 - Group B
 - Student branches that attended SouthEastCon between 2010-2020 and do not fall into group A
 - Group C
 - Student branches that had won any student competition between 2000 – 2010 and do not fall into groups A and B*

*The plan for these branches is to open up the conversation with “I see that your branch has won X/Y/Z student competition at past SouthEast Cons. We want to make sure your branch is aware of SouthEastCon 2022”

List of Student Branches and Sections



Students Fall Mailers

Update on boxes that will be mailed to student branches at the start of fall

Hardware Trophy Redistribution

- ▶ Planning to send back the original plates to the 27 Universities at the start of the Fall semester.
 - **We will be mailing to the departments if we do not confidently know the student branch contact.**
- ▶ Ideally we can put together a packet of information to send along with the plate and include information on SouthEastCon 2022
- ▶ Bailey will manage making the plaques, assembling the boxes, mailing the boxes.
- ▶ Needed support
 - Creating brochures for SouthEastCon 2022, get them printed and mailed to Bailey by July 30th
 - Funds for the shipping. Estimate \$15 per university and that would include the boxes and the labels. Bailey has stamps.com and can take care of generating all labels

Plan for Next ExCom Updates

- ▶ Go over student competitions that will be part of SouthEast Con 2022
 - List of competitions and go over which competitions will be more like how they were pre pandemic and which will be different
- ▶ Update on student branch mailers
- ▶ Update on Discord channels