

CHAPTERS NEWSLETTER

A Publication of the Chapters and Membership Department

Society Officers

President Caio A. Ferreira

Vice President Robert D. Lorenz

Secretary R. Mark Nelms



Serving 92 Chapters Worldwide

September 2000

website: www.ieee.org/ias

Department Chair's Message

Kevin Peterson

Chapters & Membership Dept Chair

Can you remember when you were a new member in IAS? Did members take you under their wings and introduce you to the others in the chapter? New members need mentors in IAS Chapters. We have many experienced members in each chapter who could be great mentors for the younger members joining our society.

Thomas Watson once said, "*The great accomplishments of man have resulted from the transmission of ideas and enthusiasm.*" I know I have very fond memories of my first experiences with the Los Angeles IAS Chapter and have noticed that all healthy chapters have some formal or informal mentoring to promote active involvement in chapter activities.

You could help a new member in several ways:

- Properly introduce the new member to the chapter members.
- Explain how the chapter functions and describe the officers' positions.
- Offer to help the member get involved in the chapter.
- Assist the member with planning professional development activities.
- Answer any technical questions the member may have.
- Generally, allow the member to feel like he/she belongs to the chapter.

Society President Message

Caio Ferreira

IAS President

I am writing to you today to remind you of the importance of filing the IAS Chapters Activities Report with your Area Chair/Chapters Department. These reports are used to select the Outstanding Chapters worldwide and to give the selected Chapters the recognition they deserve. Outstanding chapters provide distinguished services to the Society members at a local level. The Society takes great pride in recognizing the Outstanding Chapters each year!

Another important aspect of Outstanding Chapter Awards is to recognize the distinguished service of the Chapter Chair. It is of utmost importance to our Society to identify, mentor, and promote outstanding individuals for future leadership roles in the Society.

Chapter Chairs are also members of the Society Council, which governs the Society. The Society Council meets once a year at the Annual Meeting. The Chapters Department Annual Workshop also occurs at the Annual Meeting. Both events present unique opportunities for Chapter Chairs to meet with the Society Executive Board members. This is also a great opportunity for Chapter Chairs to participate in the Chapters Department strategic planning. I urge all Chapter Chairs to meet with us this year at the Annual Meeting in Rome, Italy.



An Overview of the IEEE Color Books

Erling Hesla
Chapters Communication Chair

Industry Applications Society will produce the “first ever” overview of the thirteen Color Books by October 2000. The overview will consist of written materials and a CD outlining each Color Book, and will include electronic slides. Members may want additional information, or want to join a Color Book working group, so information on how to contact the working group chair for each Color Book will be part of the package. Documentation will be in English and Spanish. Although the materials can be used as “stand-alone” information by individuals, their value will be greatly enhanced if the overview is presented by someone familiar with Color Books.

This overview will be presented for the first time at a one-day panel session in Rome, October 2000, during the IAS Annual Meeting. A shorter presentation of approximately two hours will be made to another group of engineers in Rome a few days later. Following the Annual Meeting, the Chapters and Membership Committee plans to distribute an overview packet to each Chapter Chair.

Chapters can use the material in whatever manner best suits their needs; a panel session or tutorial may be the choice, or the overview could be an introduction to a series of tutorials on Color Books. A joint presentation with Power Engineering Society is another possibility. Color Books are recognized worldwide as unusually valuable to engineers, so the overview can become the means to recruit non-members to Industry Applications Society.

MENTORING

“There are high spots in all of our lives, and most of them have come about through encouragement from someone else.”

“Talent does you no good unless it is recognized by someone else.”

“Nothing is more validating and affirming than feeling understood. And the moment a person begins feeling understood, that person becomes far more open to influence and change.”

Undoubtedly Chapters will develop many unique, innovative ways to make good use of the overview. Whatever the choice, remember that you can call on any of the officers of IAS Chapters and Membership Committee to help you. You may want further information, advice, or even a speaker. Do not hesitate to call. You will want to maximize your use of this outstanding tool!

Joint Chapter Opportunities

Mark Harris
Chapter Development Chair

“A Chapter is a technically-oriented organizational unit... formed to promote the interests of Section Members in a specific technical area associated with one or more of the IEEE Societies.” Societies exist to meet those technical interests. A major function of the IAS Chapter Development committee is to identify and encourage the formation of chapters in sections with a significant IAS membership. The Industry Applications Society embraces a diverse range of technical activities and shares much common technical ground with the Power Electronics (PELS), Power Engineering (PES), and Industrial Electronics (IES) societies. Often forming a joint chapter with one or more of these societies is a suitable approach for areas with small memberships. This is one example of intersociety cooperation between IAS, PES, PELS and IES (keep in mind that these shouldn't be viewed as the only candidates for joint activities).

The other major function of Chapters Development is to aid and encourage the development and vitality of all IAS chapters throughout the world. A second example of intersociety cooperation is a recent intersociety agreement to offer access to each other's Distinguished Lecturer Programs, thereby expanding the choices for high-quality distinguished speakers. This means that chapters now have the same access to quality programs as do joint chapters.

A third example of Intersociety cooperation is cooperation between chapters themselves. Chapter success is very much in the hands of the chapter leadership and its members. Sometimes, however, the vitality of a chapter may wane due to a variety of reasons beyond the control of its members and leadership. Running joint programs of common interest to the societies, or even combining the chapters into joint entities, may provide a solution.

Lastly, remember that the Chapters and Membership Department has many tools and resources available, such as the Distinguished Lecturer programs, tutorial support, and video libraries. Use these to help run successful programs. Don't hesitate to contact us for any help that you need.

Distinguished Lecturers & Regional Speakers Programs

Azizur Rahman
DL & RS Chair



Reporting activities on Distinguished Lecturers (D/L) and Regional Speakers (R/S) Program over the past three months:

D/L by Dr. Ron Harley

- IAS Benelux Chapter, Delft, Netherlands

D/L by Dr. Tadashi Fukao

- IAS Singapore Chapter, IEEE Indonesia Section (Bandung)
- SMED 2000 at University of Gadjamada, Indonesia

R/S by Dr. M.A. Rahman

- IAS Calcutta Chapter, India
- IAS Hyderabad Chapter, India
- IAS New Zealand North Island Chapter, Auckland
- IEEE New Zealand South Island Section, Christchurch

These were well attended. Thanks to the speakers and local organizers.

IAS Chapter chairs are requested to invite any of the current IAS Distinguished Lecturers to their upcoming fall/winter chapter technical meetings. The IAS D/L and R/S Program supports the travel cost of each D/L lecturer up to \$500 per lecture.

Please contact any distinguished lecturer directly, or contact:

IEEE/IAS-D/L Chairman:

Professor M.A. Rahman

Faculty of Engineering and Applied Science

Memorial University of Newfoundland

St. John's, NF, Canada A1B 3X5

709-737-8936, 709-737-4042 FAX

Email:rahman@engr.mun.ca

More information on the DL & RS Programs can be found at the IAS Chapters & Membership web site at <http://www.ieee.org/ias/cmd>.

REMINDER

2000 IEEE IAS Annual Meeting

October 8-12, 2000
Rome, Italy

Sunday, October 8th
Chapters Annual Workshop
8:30 – 3:30
S-Leonardo Room

The Chapters & Membership Department will provide complimentary registration to the conference for IAS Chapter Chairs who attend the Chapters Annual Workshop.

More information on the conference is available at <http://www.aei.it/ias2000.html>



Chapters Leadership Manual

Darin Hucul

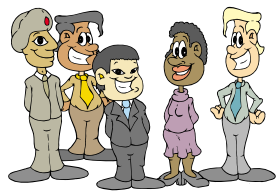
Chapters Manual Chair

The Chapter Leadership Manual was delivered to IEEE for printing in May. Copies will be sent to Chapter Chairs as soon as they become available.

Many thanks to all those who assisted in editing the Leadership Manual. Your help was extremely valuable.

Membership Update

Clayton Reid
Membership Chair



Society membership as of June 2000 is 11,458 active members, with an additional 2,146 members in arrears.

Membership is the heart of organization; therefore, it is an important goal to increase our membership.

There are 4 R's to membership:

Recruitment	Retainment
Recovery	Recognition

The 2000 Chapter Membership Contest is an excellent incentive for recruitment to increase our membership, and at the same time provide additional cash for your chapter activities. For those who have not signed up, **YOU CAN DO IT NOW.**

The Contest is for calendar year 2000 and final results will be announced after the review of the 2000 IEEE Secretary's Report in March 2001. To be eligible for this promotion, please send the following information by October 2000.

The _____ Chapter wishes to participate in the 2000 IAS Membership Contest.

Chapter Chair _____
Telephone _____
E mail _____
Address _____

Send information to:

Clayton Reid, Membership Chair
Allen- Bradley Canada Ltd.
Cambridge On. N1R5X1
e-mail: chreid@ra.rockwell.com

Your involvement in this contest will help the IAS to meet its membership goal and improve the health of your Chapter at the same time.

The 2001 IEEE Industry Application Society Membership Information and Application Form will be available at the IAS conference. Copies will be mailed to Chapter Chairs who do not plan to attend the conference. You can also obtain membership information at <http://www.ieee.org/ias>.

IEEE Neural Networks Council

Mo-Yuen Chow
RIG Committee Chair, IEEE Neural Network Council



Did you know the Industry Applications Society (IAS) is one of the eleven sponsor societies of the Regional Interest Group (RIG) Committee of the IEEE Neural Network Council (NNC)? NNC has allocated funding to financially support RIG meetings in order to promote computational intelligence technologies.

Over the years, there has been a significant amount of technical interest overlay between IAS and NNC. This year, we would like to strengthen the relationship between the IAS local chapters and the NNC RIGs in order to provide synergy among our professional entities.

If your local chapter has activities related to computational intelligence, the chapter is highly encouraged to form a NNC RIG and hold joint meetings together for your technical activities. This approach does not take up more of the chapter time nor resources, yet it allows you to pull additional resources together to enhance your local chapter committee and meetings as well as to promote both IAS and NNC activities. I consider this a win-win collaboration, and it is one of the reasons that IAS is one of the sponsoring societies of NNC.

If your local area does not have a NNC RIG, I highly encourage you to form and join this fascinating professional activity realm. If you need more information on forming a NNC RIG, please refer to: <http://www.ewh.ieee.org/tc/nnc/general/regional.html> or <http://master.ceat.okstate.edu/conference/cdc/rig/rig.html>, or contact me at:

Dr. Mo-Yuen Chow
Department of Electrical and Computer Engineering
North Carolina State University
Raleigh, 27695-7911 USA
Tel: (919) 515-7360, FAX: (919) 515-5523
E-mail: chow@eos.ncsu.edu

I look forward to seeing the success of the IAS Chapters and NNC Regional Interest Groups' synergetic collaborations!

Could You or Others in Your Chapter Be an IEEE Senior Member?

The grade of Senior Member is the highest for which application may be made and shall require experience reflecting professional maturity. For admission or transfer to the grade of Senior Member, a candidate shall be an engineer, scientist, educator, technical executive, or originator in IEEE-designated fields. The candidate shall have been in professional practice for at least ten years and shall have shown significant performance over a period of at least five of those years, such performance including one or more of the following:

- a. Substantial engineering responsibility or achievement, or
- b. Publication of engineering or scientific papers, books, or inventions, or
- c. Technical direction or management of important scientific or engineering work with evidence of accomplishment, or
- d. Recognized contributions to the welfare of the scientific or engineering profession, or
- e. Development or furtherance of important scientific or engineering courses in a program on the "reference list of educational programs" (REP list) or
- f. Contributions equivalent to those of (a) to (e) in areas such as technical editing, patent prosecution, or patent law, provided these contributions serve to advance progress substantially in IEEE-designated fields.

For more information, or the Senior Member upgrade forms, visit the web page <http://www.ieee.org/membership> and click on "Upgrade your existing IEEE membership."

Want an IEEE Web Account?

Forget your web account password?

An IEEE web account allows you to renew your membership online, update your member records automatically online, and to make purchases at the IEEE Online Store as an IEEE Member. You can set-up a web account, or retrieve the username or password from your existing web account at <http://shop.ieee.org/store/login.asp>

Just Say No to Complicated Email Addresses – Get an IEEE Email Alias (and FREE Virus-Scanning)!



The IEEE offers an Alias Service in which IEEE members can register or update a personal alias of their choice (subject to availability and on a "first come, first serve" basis). Messages addressed to the alias@ieee.org will automatically be forwarded to the real Internet e-mail address.

So, whereas your email address before may have been J1277abc@xyzprq.com, with the IEEE Personal Email Alias, you can be j.doe@ieee.org.

Our virus-scanning feature helps prevent you from receiving viruses in the first place. Attachments within your e-mail that are sent to your IEEE email alias will be scanned for viruses. If a virus is found, the attachment will be deleted. An alert is then sent to both the sender and recipient. While the IEEE cannot guarantee that every virus will be found, the virus scanning software is updated daily with a current virus recognition file. A service like this typically costs \$30 per year, but as an IEEE member, it is yours FREE of charge.

When you change Internet service providers, or jobs, you can change the email address to which your email is forwarded. For more information, visit the web site: <http://eleccomm.ieee.org/personal-aliases.shtml>

INVOLVE STUDENT MEMBERS!

With the new academic year, we expect a new flock of Student IEEE members. We would like to encourage all Chapters to recognize, keep in touch with, and support their local Student Branches and Student Branch Chapters. Encourage Student members to attend your IAS Chapter meetings.

Remember, students are the future volunteers and getting them involved now is key!

IAS Chapters & Membership Department
 c/o Kevin L. Peterson
 P2S Engineering, Inc.
 5000 East Spring Street, 8th Floor
 Long Beach, CA 90815-1275

IEEE IAS CHAPTERS & MEMBERSHIP DEPARTMENT STAFF

Department Chair

Kevin L. Peterson, P.E.
 P2S Engineering, Inc.
 5000 E. Spring Street, 8th Floor
 Long Beach, CA 90815
 562.497.2999
 562.497.2990 fax
 k.l.peterson@ieee.org

Department Vice Chair & Chapters Development Committee Chair

Mark Harris
 Hamilton Sundstrand
 4747 Harrison Avenue
 P.O. Box 7002, MS 749-6
 Rockford, IL 61125-7002
 815.226.6098
 815.394.2497 fax
 m.harris@ieee.org

Chapters Communication Committee Chair

Erling C. Hesla
 620 112th Street SE, #157
 Everett, WA 98208
 425.347.1927
 425.316.3093 fax
 e.hesla@ieee.org

Chapters Manual Committee Chair

Mr. Darin Hucul
 Hucul Engineering & Construction Corporation
 3814 – 44 Street
 Edmonton, AB T6L 7B7
 Canada
 780.465.0054
 780.450.9966 fax
 d.w.hucul@ieee.org

Society Membership Committee Chair

Clayton H. Reid
 Allen-Bradley Canada, Ltd.
 135 Dundas Street
 Cambridge, ON N1R 5X1
 Canada
 519.740.4109
 519.740.9871 fax
 chreid@ra.rockwell.com

Distinguished Lecturers & Regional Speakers Program Committee Chair

Dr. M. Azizur Rahman
 Faculty of Engineering and Applied Science
 Memorial University of Newfoundland
 St. John's, NF, Canada A1B 3X5
 709.737.8936 home
 709.753.7464 office
 709.737.4042 fax
 rahman@engr.mun.ca

Distinguished Lecturers & Regional Speakers Program Committee Vice Chair

Dr. Ronald Gordon Harley
 Duke Power Distinguished Professor
 School of Electrical and Computer Engineering
 Georgia Institute of Technology
 Atlanta, GA 30332-0250
 404.894.1876
 404.894.4641 fax
 rharley@ee.gatech.edu

Electronic Publications Committee Chair

Mr. William G. Ghattas
 9387 Flicker Avenue
 Fountain Valley, CA 92708
 714.965.2827
 714.963.3979 fax
 w.g.ghattas@ieee.org

Chapters Area Chairs

Region 1E	Hazem Huss
Region 1W	Gualtiero Faustoferri
Region 2	David McCombe
Region 3	James Beall
Region 4	Matt Zimmer
Region 5	vacant
Region 6N	Curt Eckberg
Region 6S	Ray Holstead
Region 7W	Darin Hucul
Region 7E	Erling Hesla, acting
Region 8	Moshe Harpaz
Region 9N	Hector Martinez
Region 9S	Edison Da Silva
Region 10W	C. Satish
Region 10E	Gilbert Li