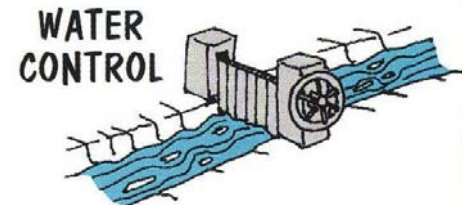
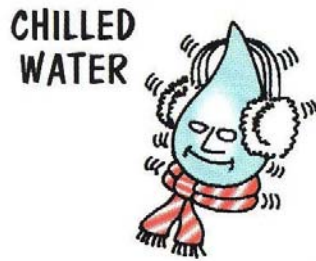
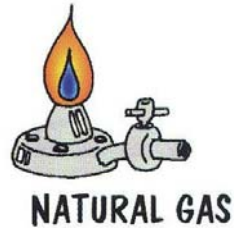
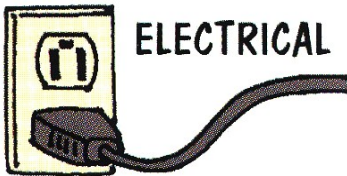




**The Reedy Creek
Improvement District**

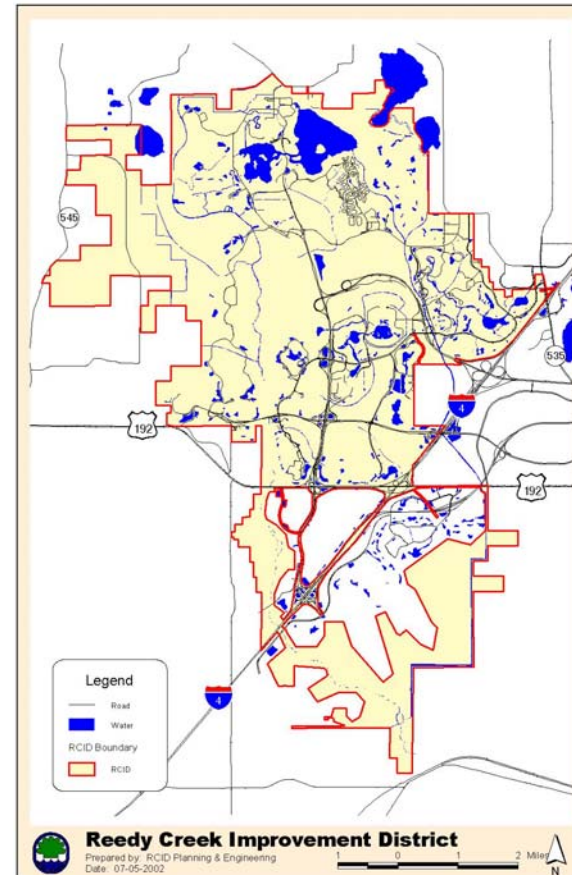
Reedy Creek Energy Services
Reliable Magic

Diversified Utility Services



Service Area

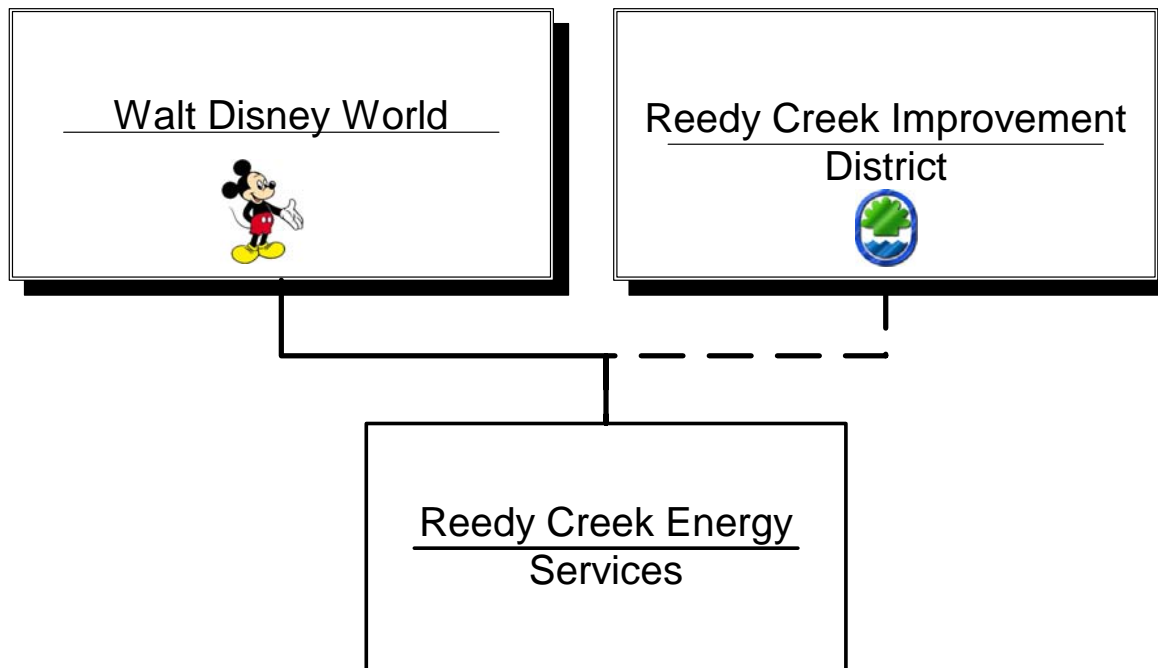
- 38 square miles





Reedy Creek Energy Services

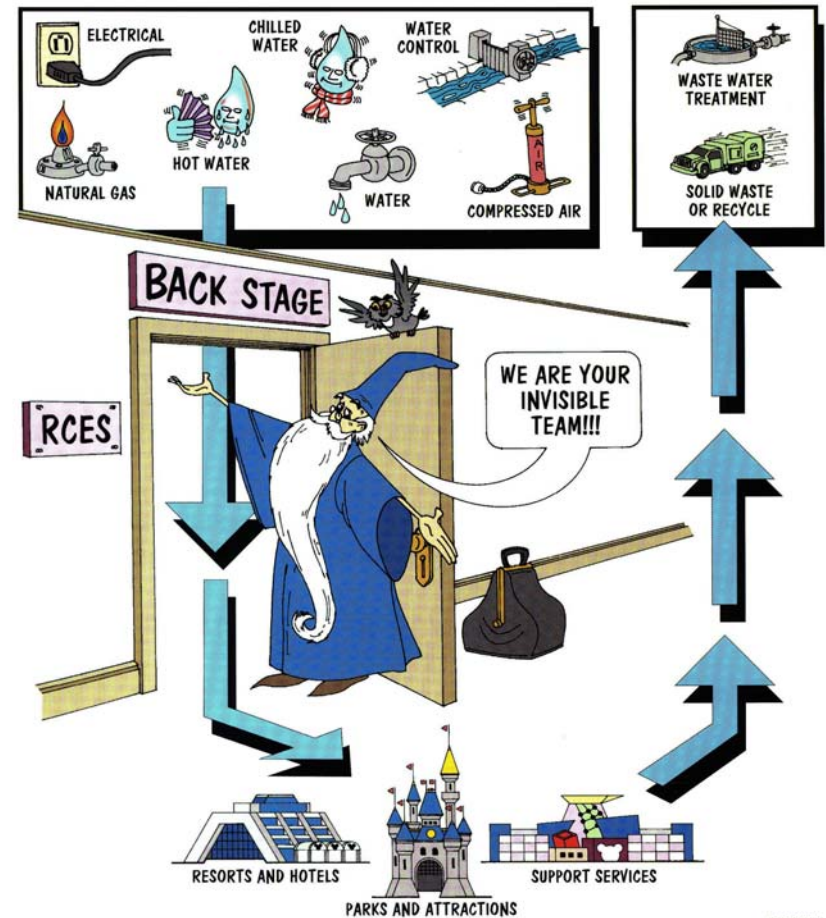
- Contractor to the Reedy Creek Improvement District



Unique in Utility Industry

■ MISSION

- Invisible
- Close to Customers
- Highest Reliability





Unique in Utility Industry

- Operate 7 days, 24 hours
- Workforce: 320 skilled, well-trained people
- Strict regulatory environment



Florida Public Service Commission



Drinking Water

- Supplied from 12 wells on property - Floridan Aquifer
 - Excellent water quality
 - Chlorination only
 - 68% of water returns as sewage to wastewater treatment facility



Wastewater Treatment

- 15 MGD annual average daily flow
 - 100% of treated wastewater becomes reclaimed (reuse) water
 - Solid residuals dewatered and composted

Reuse/Reclaimed Water

- Irrigation
- Cooling Towers
- Vehicle Washing



Storage Tanks (15 million gallons)

Solid Waste Services

- Fleet of 24 trucks
 - 24 hours/day, 7 days/week





Solid Waste Services

- Collect 133,000 tons annually for disposal & recycling
 - 11,000 tons recycled
 - 2850 tons wood and yard waste chipped for blending in compost
- In-vessel Food composting facility

Chilled Water

- Meet air conditioning demands
- Manage chiller plants
- 40,000 Ton Capacity





High Temperature Hot Water

- Average temperature of 350°F
- Provided to Magic Kingdom and resort hotels
 - Building heat
 - Domestic hot water
 - Chilled water production

Other Services

- Water Control - Drainage
- Canal System Maintenance
- Roadways & Signs





Natural Gas Distribution

- Primary fuel for Co-generation plant
- Heating
- Cooking
- Auxiliary boilers
- Swimming pools

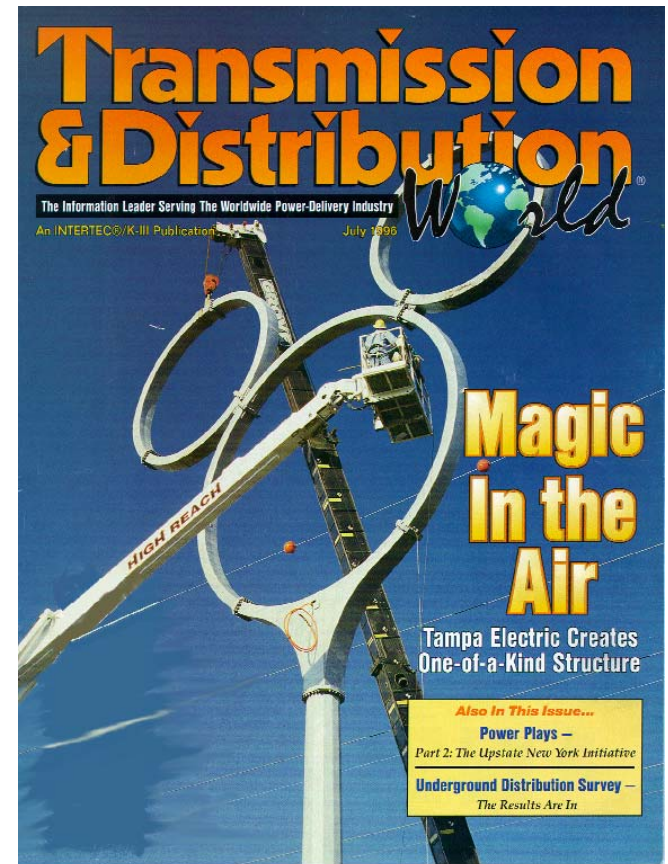
Electric Generation & Distribution

- Purchase about 75% of power needs
- 196 MW peak load
- Remaining 25% of power needs (52.5 MW)
Combined cycle co-generation plant



Electric Generation & Distribution

- 25 miles of 69 kV lines
 - 14 miles underground
 - Aesthetics, security, reliability
- 290 miles of underground 12 kV feeders



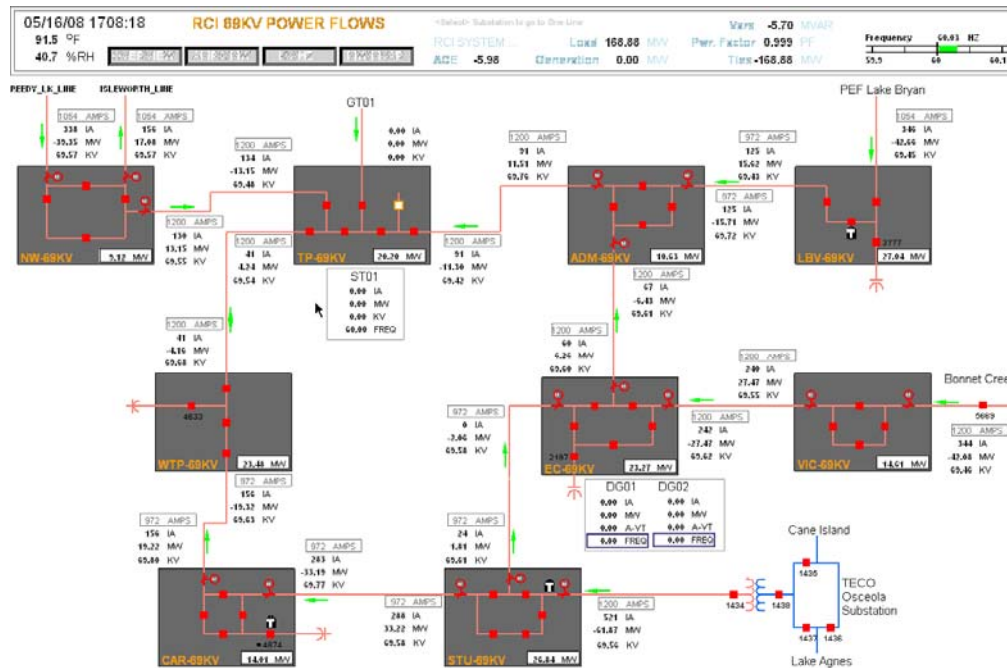
Electric Distribution

- Nine 69 kV substations



Electric Distribution

■ Energy Control Center



24 hour coverage



Distribution Switchgear

- Metal Enclosed Switchgear
 - Switching Stations
 - Unit Substations



Distribution Switchgear

- 15 kV Metal Clad Switchgear
 - Arc-resistant
 - OSHA 1910.269
 - IEEE C37.20.7

Distribution Switchgear

- Special Cases
 - Simple Switching Points
 - Gas Insulated with Fault Interrupters



Distribution Switchgear

- Special Cases
 - Mixed Gear



Reliability That Never Stops

- Main Street USA



Low-Voltage Switchgear

- Unit Substations
 - Epcot Energy & Wonder



Low-Voltage Switchgear

- Unit Substations
 - Indoor double-ended



Low-Voltage Switchgear

- Outdoor Switchboards
 - Animal Kingdom Conservation Station



Low-Voltage Switchgear

- Motor Control Centers
 - Energy Plants



Automation Networking

- System Control



Automation Networking

- Distribution Automation



Automation Networking

- Process Control Systems
 - Pump Station B MCC





Reedy Creek Energy Services



THANK YOU!



Reedy Creek Energy Services



Questions?